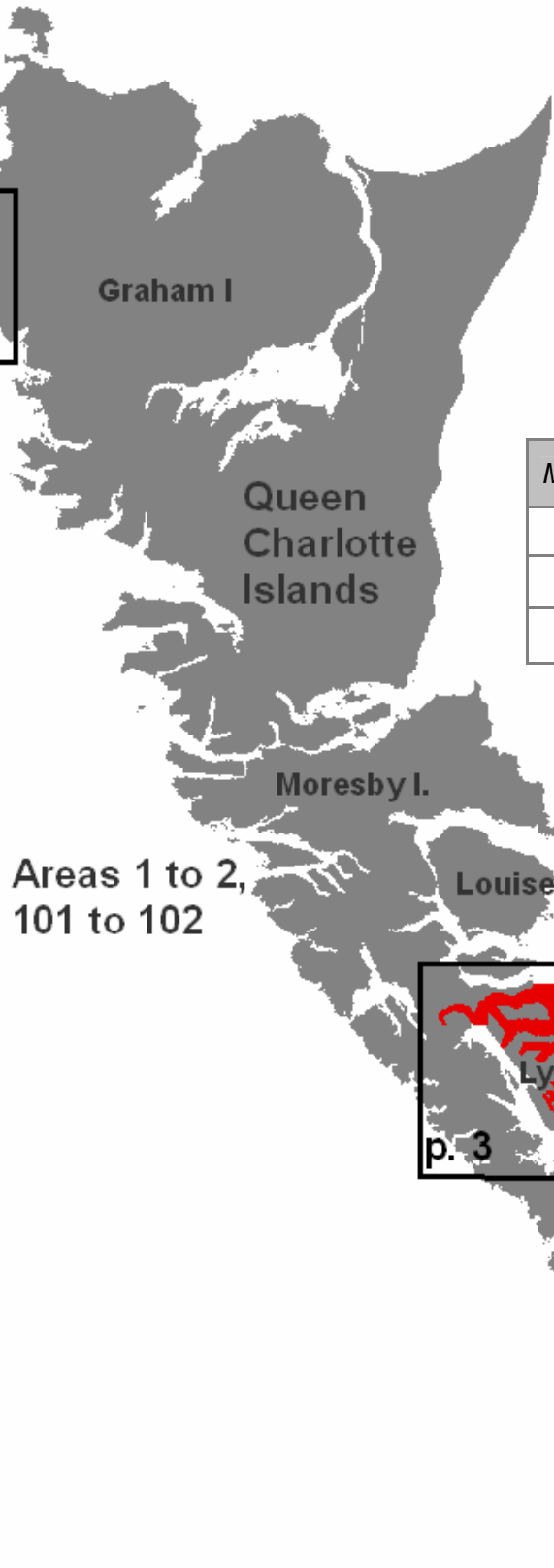
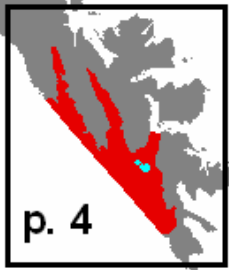
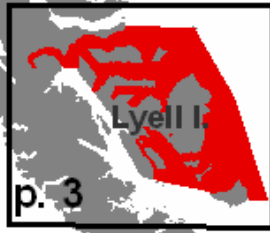


# Area 1 to 2, 101 to 102



Map/Page	Name
2	Frederick Island
3	Lyell Island
4	South Moresby

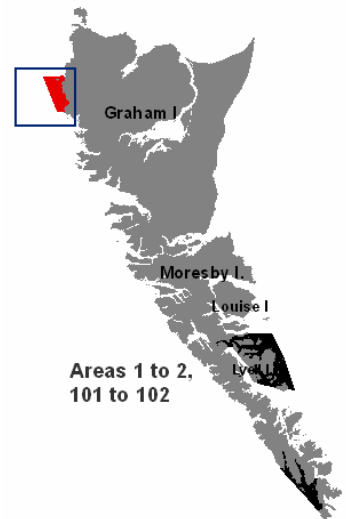


**Frederick Island Chart 3802**

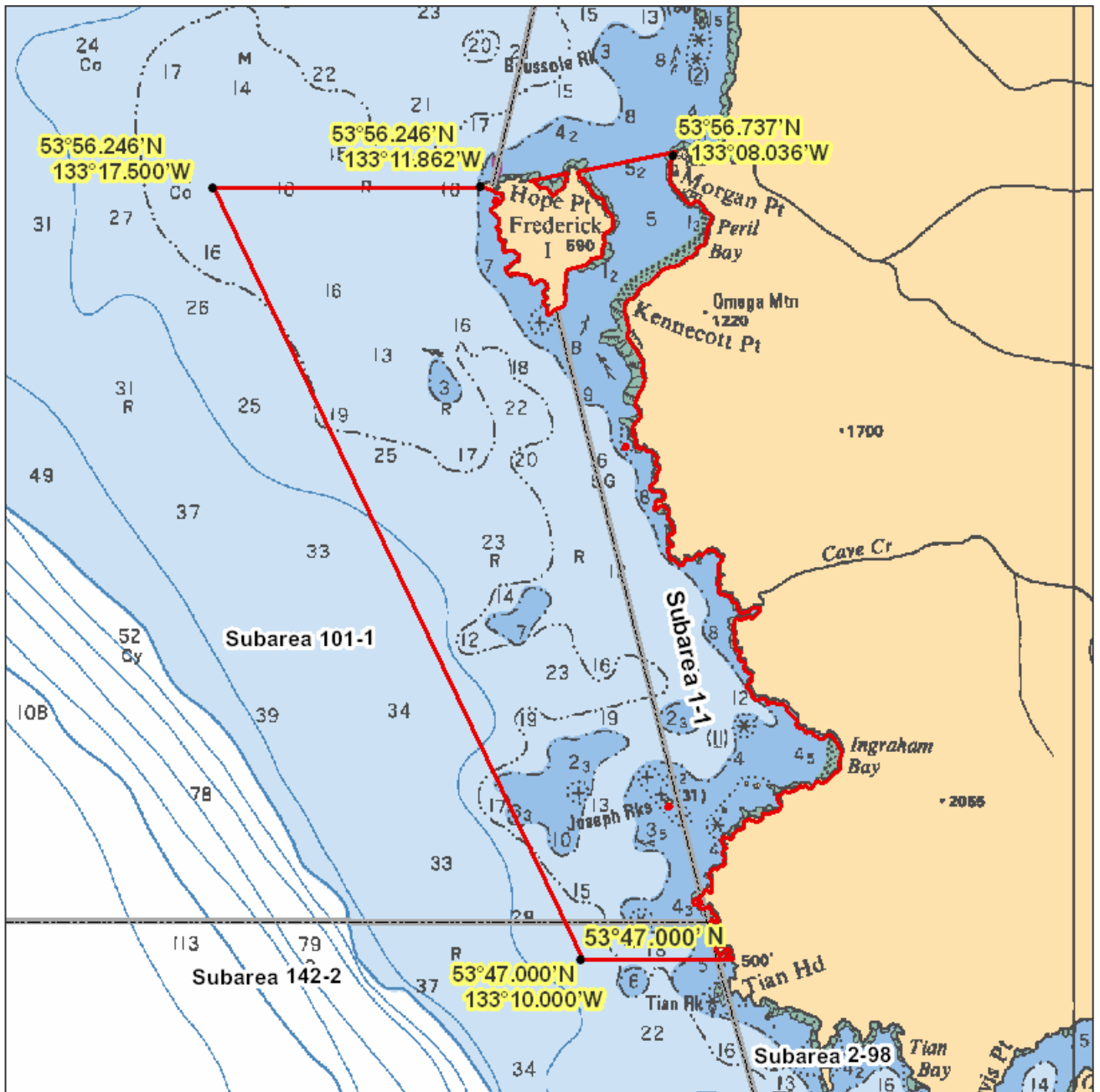
Those waters of Subareas 1-1, 101-1 and 142-2 that lie inside a line that:

begins at	53°56.246'N	133°17.500'W	in water
then to	53°56.246'N	133°11.862'W	Hope Point
then to	53°56.737'N	133°08.036'W	Morgan Pt
then southerly following the shoreline of	Graham Island to the intersection with the parallel passing through 53°47.000' north latitude,		
then to	53°47.000'N	133°10.000'W	in water

then to the beginning point.



Areas 1 to 2, 101 to 102



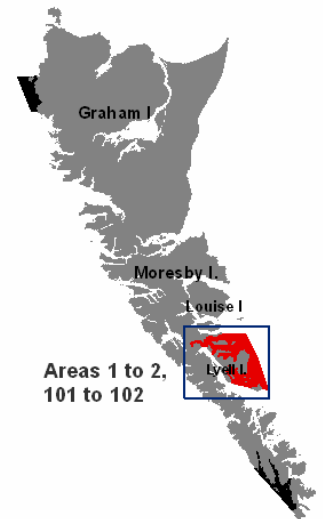
Areas 1 to 2, 101 to 102

**Lyell Island**

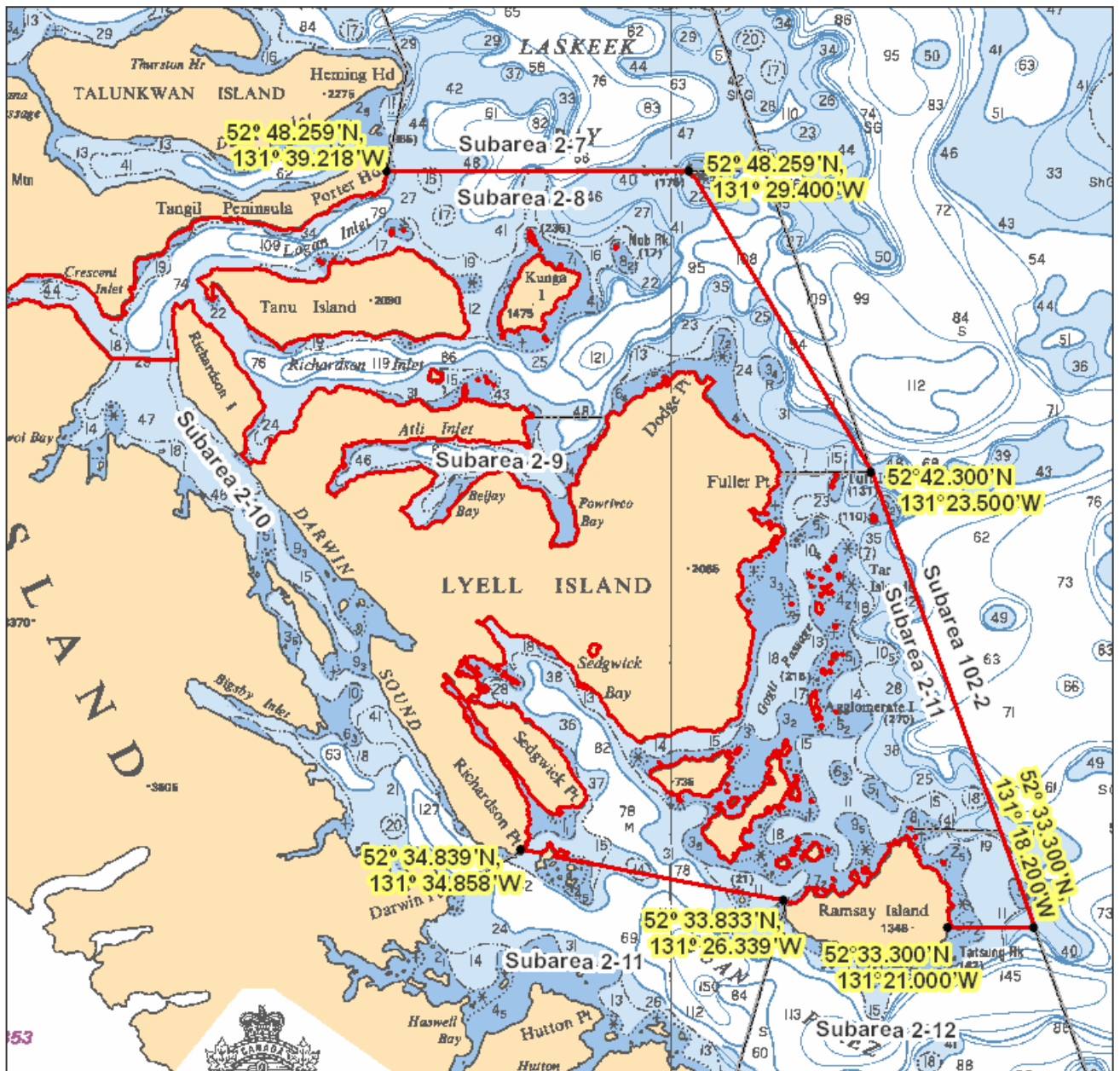
**Chart 3902**

Subarea 2-9 and those waters of Subareas 2-8 and 2-11 that lie westerly of a line that:

begins at	52°48.259'N	131°39.218'W	Porter Head
then to	52°48.259'N	131°29.400'W	Lost Island
then to	52°42.300'N	131°23.500'W	in water
then to	52°33.300'N	131°18.200'W	in water
then to	52°33.300'N	131°21.000'W	south of Yadus Point
then following the northerly shoreline of Ramsay Island to	52°33.833'N	131°26.339'W	Ramsay Point
then to	52°34.839'N	131°34.858'W	Richardson Point

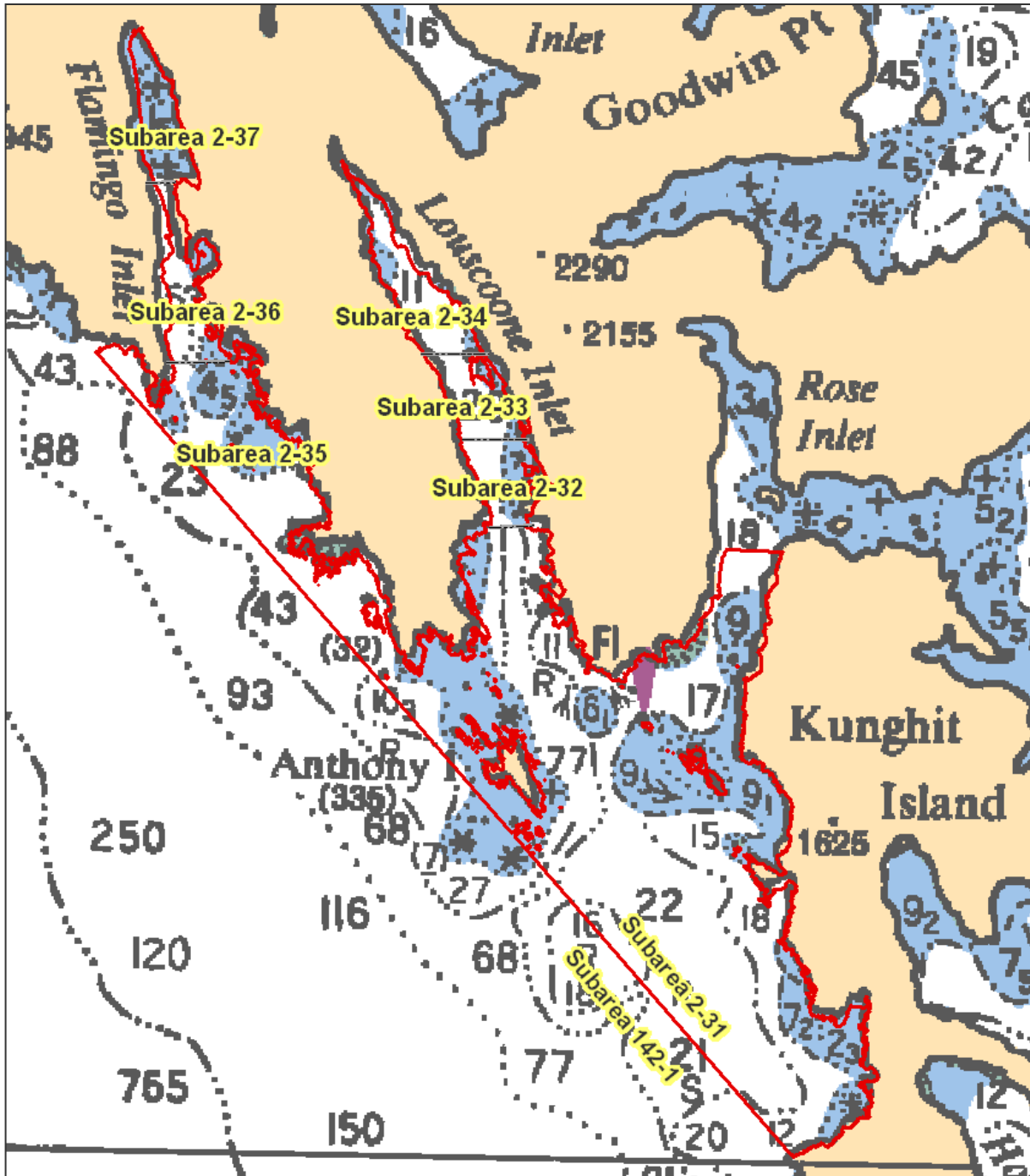
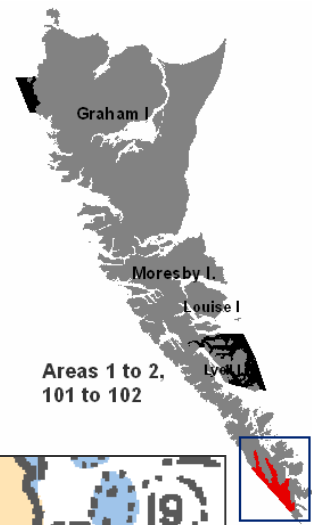


Note: Sub-Area 2-10 not included in RCA.



Areas 1 to 2, 101 to 102

Subareas 2-31 to 2-37.



Areas 1 to 2, 101 to 102