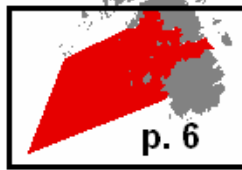
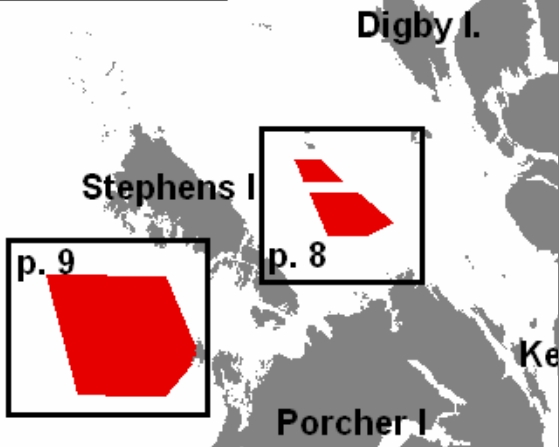


Areas 3 to 5, 103 to 105



Map/page	Name
6	Dunira
7	Hodgson Reefs
8	Gull Rocks North
8	Gull Rocks South
9	Stephens Island
10	Porcher Peninsula
11	Goschen
12	West Banks Island
13	North Danger Rocks



**Areas 3 to 5,
103 to 105**



Areas 3 to 5, 103 to 105

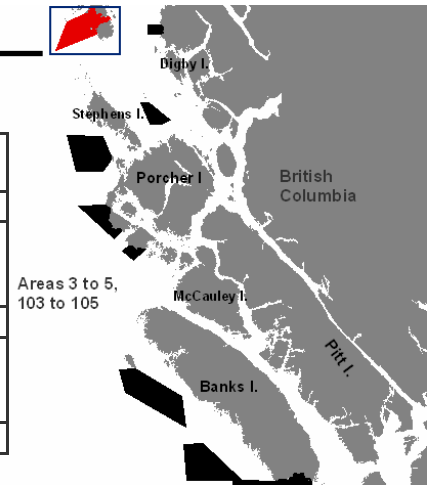
Dunira Chart 3802



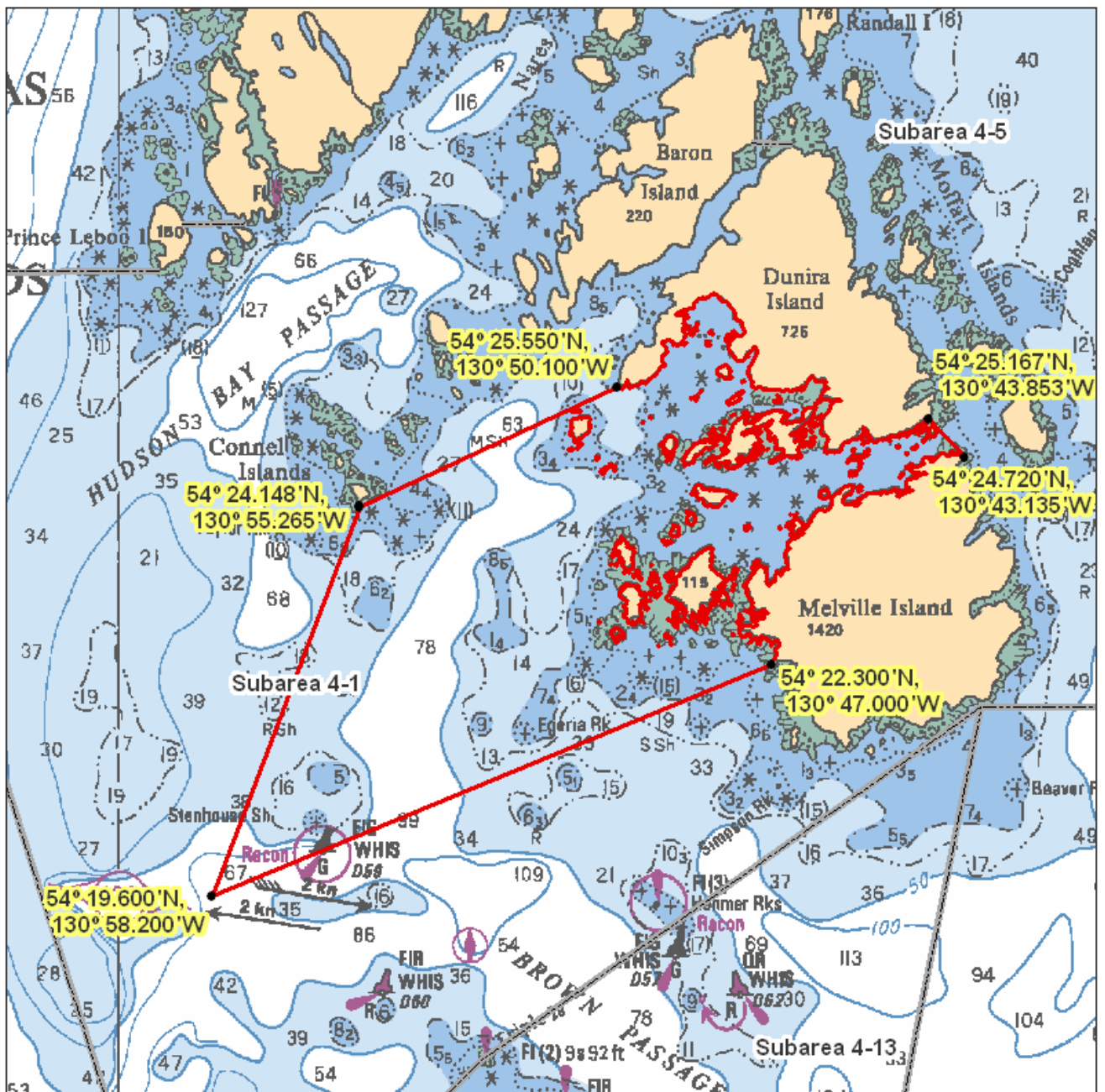
Those waters of Subarea 4-1 that lie inside a line that:

begins at	54°24.148'N	130°55.265'W	south tip of Connel Islands
then to	54°25.550'N	130°50.100'W	Farwest Point
then following the southerly shoreline of Dunira Island to	54°25.167'N	130°43.853'W	Dunira Island
then to	54°24.720'N	130°43.135'W	Melville Island
then following the northerly shoreline of Melville Island to	54°22.300'N	130°47.000'W	Melville Island
then to	54°19.600'N	130°58.200'W	in water

Areas 3 to 5, 103 to 105



then to the beginning point.



Areas 3 to 5, 103 to 105

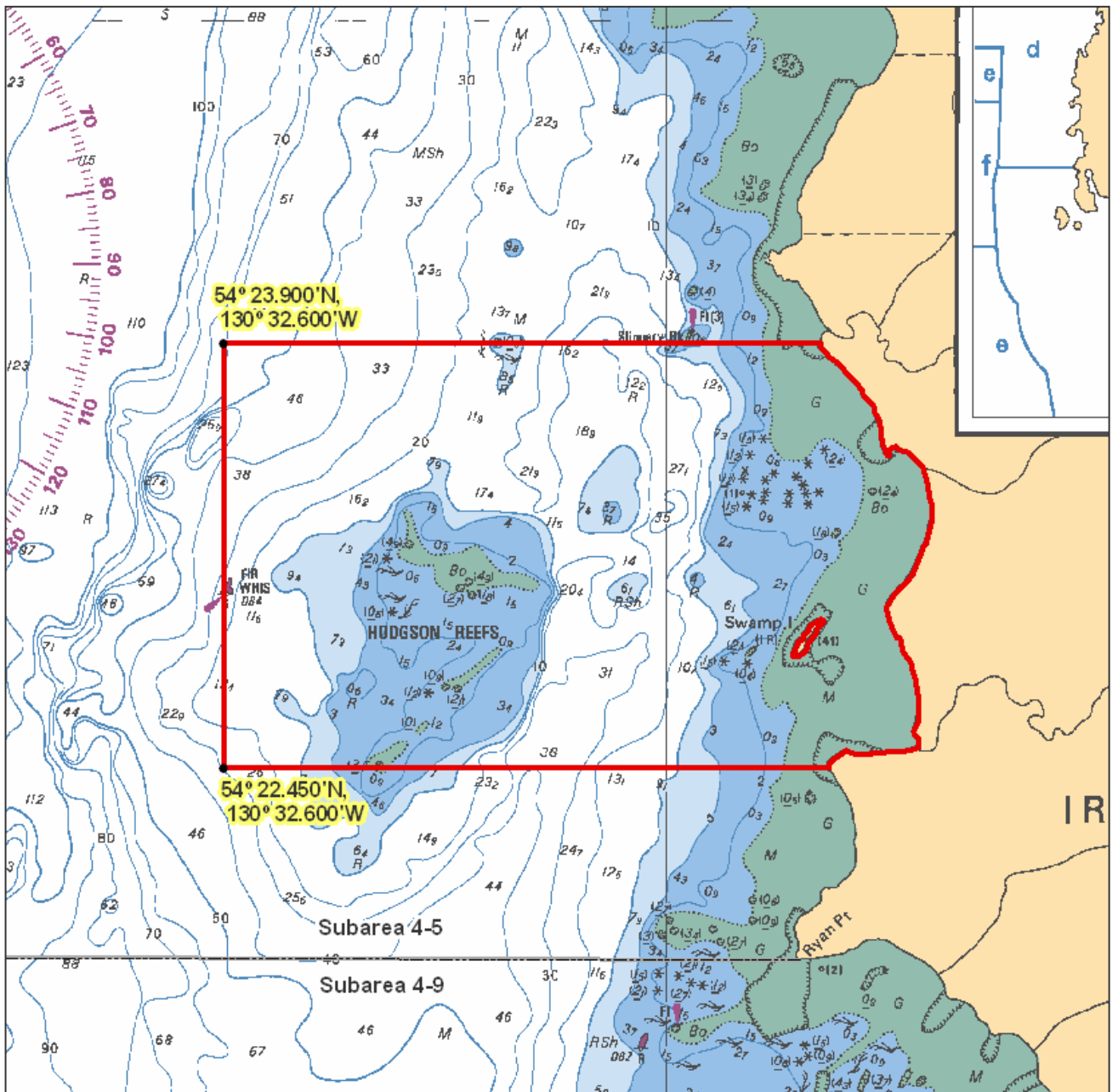
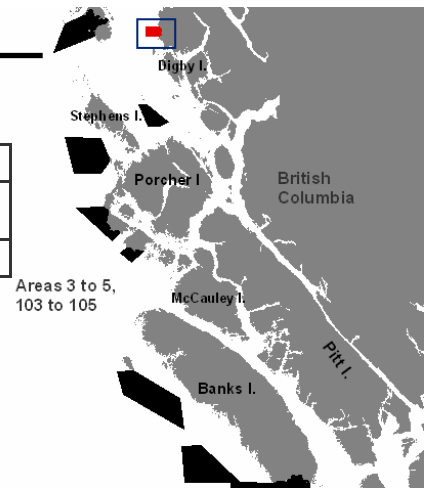
Hodgson Reefs

Chart 3959

Those waters of Subarea 4-5 that lie inside a line that:

begins at	54°23.900'N	130°32.600'W	in water
then true east to the shore, then southerly following the shoreline to the intercept with the parallel passing through 54°22.450' north latitude,			
then to	54°22.450'N	130°32.600'W	in water

then to the beginning point.



Areas 3 to 5, 103 to 105

Gull Rocks North

Chart 3957

Those waters of Subarea 4-9 that lie inside a line that:

begins at	54°11.300'N	130°34.600'W	in water
then to	54°11.300'N	130°32.300'W	in water
then to	54°10.300'N	130°30.400'W	in water
then to	54°10.300'N	130°33.900'W	in water

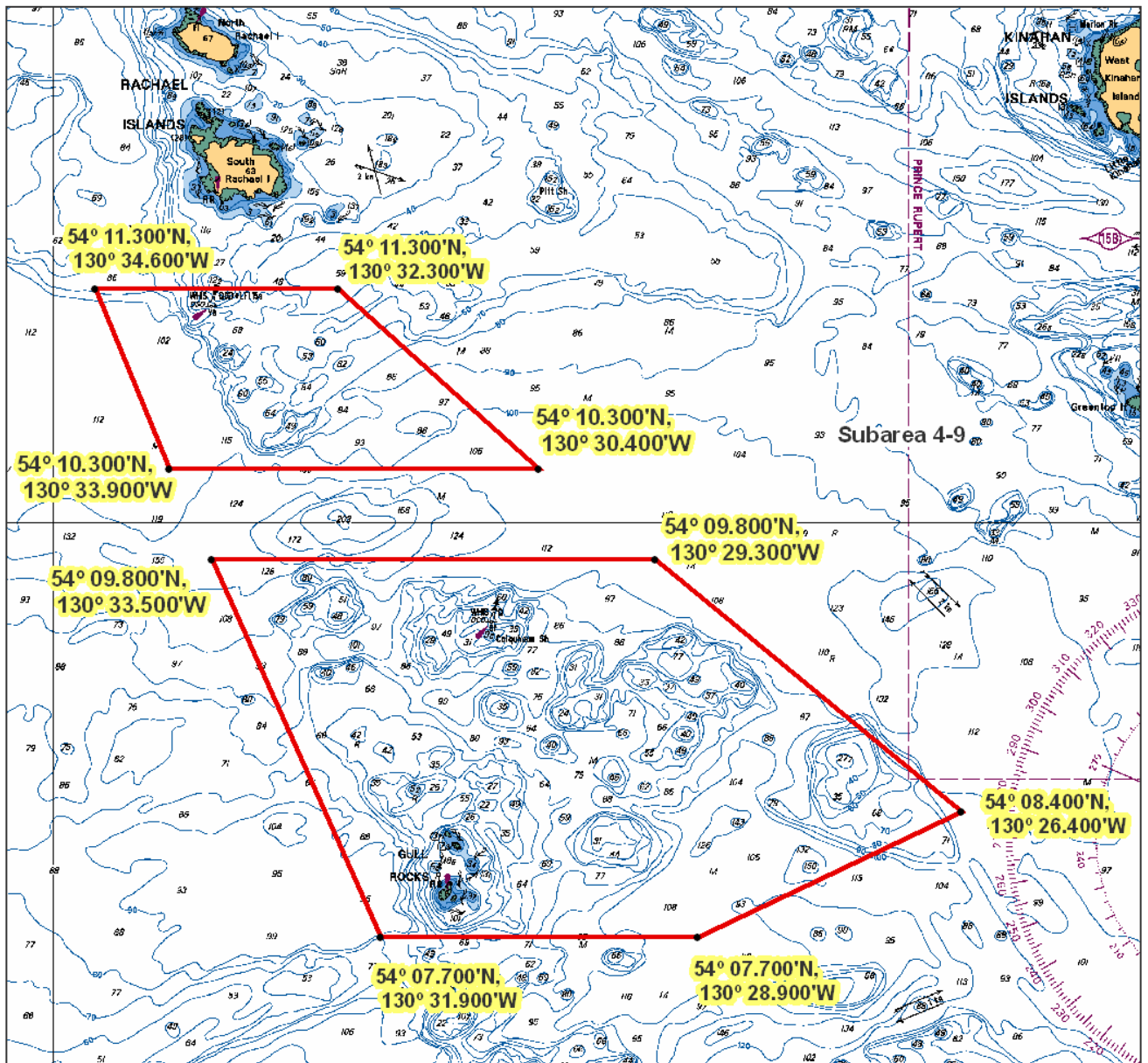
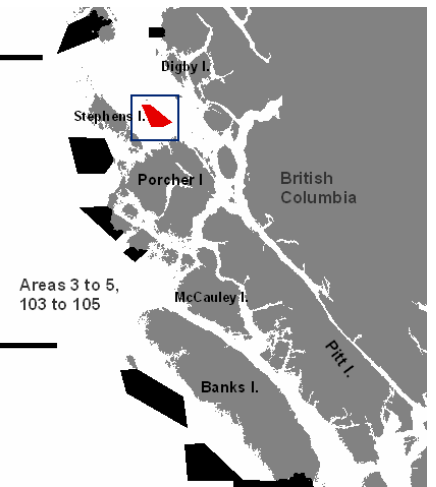
then to the beginning point.

Gull Rocks South

Those waters of Subarea 4-9 that lie inside a line that:

begins at	54°09.800'N	130°33.500'W	in water
then to	54°09.800'N	130°29.300'W	in water
then to	54°08.400'N	130°26.400'W	in water
then to	54°07.700'N	130°28.900'W	in water
then to	54°07.700'N	130°31.900'W	in water

then to the beginning point.



Areas 3 to 5, 103 to 105

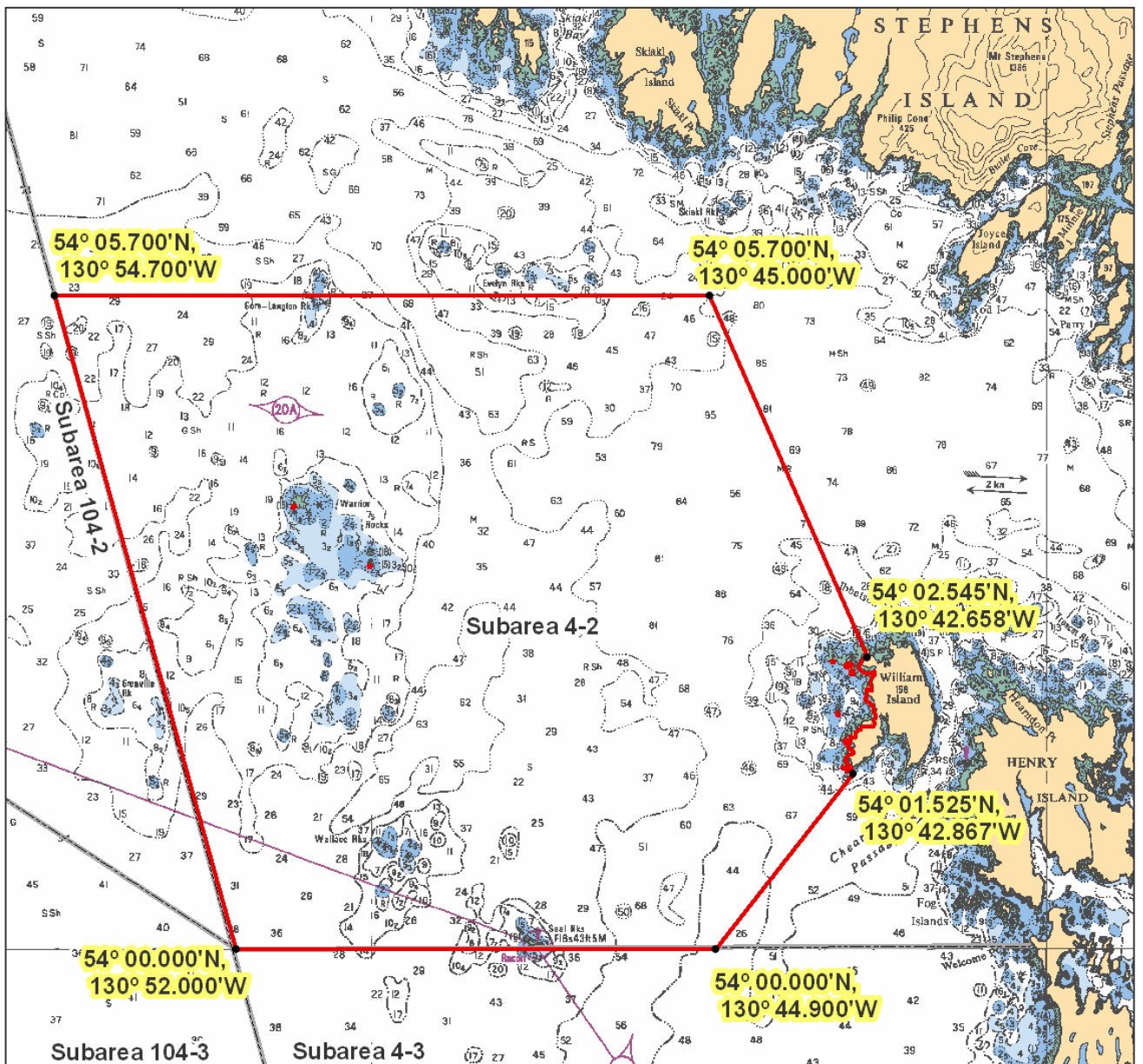
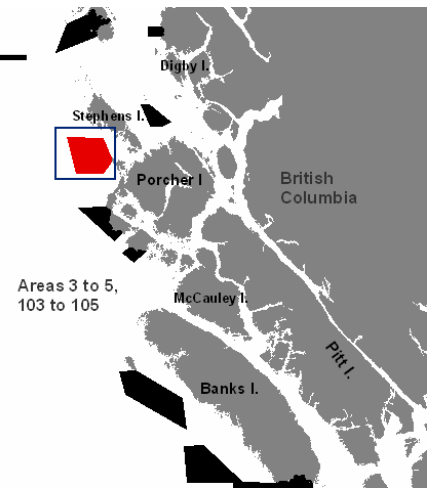
Stephens Island

Chart 3927

Those waters of Subarea 4-2 that lie inside a line that:

begins at	54°05.700'N	130°54.700'W	in water
then to	54°05.700'N	130°45.000'W	in water
then to	54°02.545'N	130°42.658'W	north tip of William Island
then to	54°01.525'N	130°42.867'W	south tip of William Island
then to	54°00.000'N	130°44.900'W	in water
then to	54°00.000'N	130°52.000'W	in water

then to the beginning point.



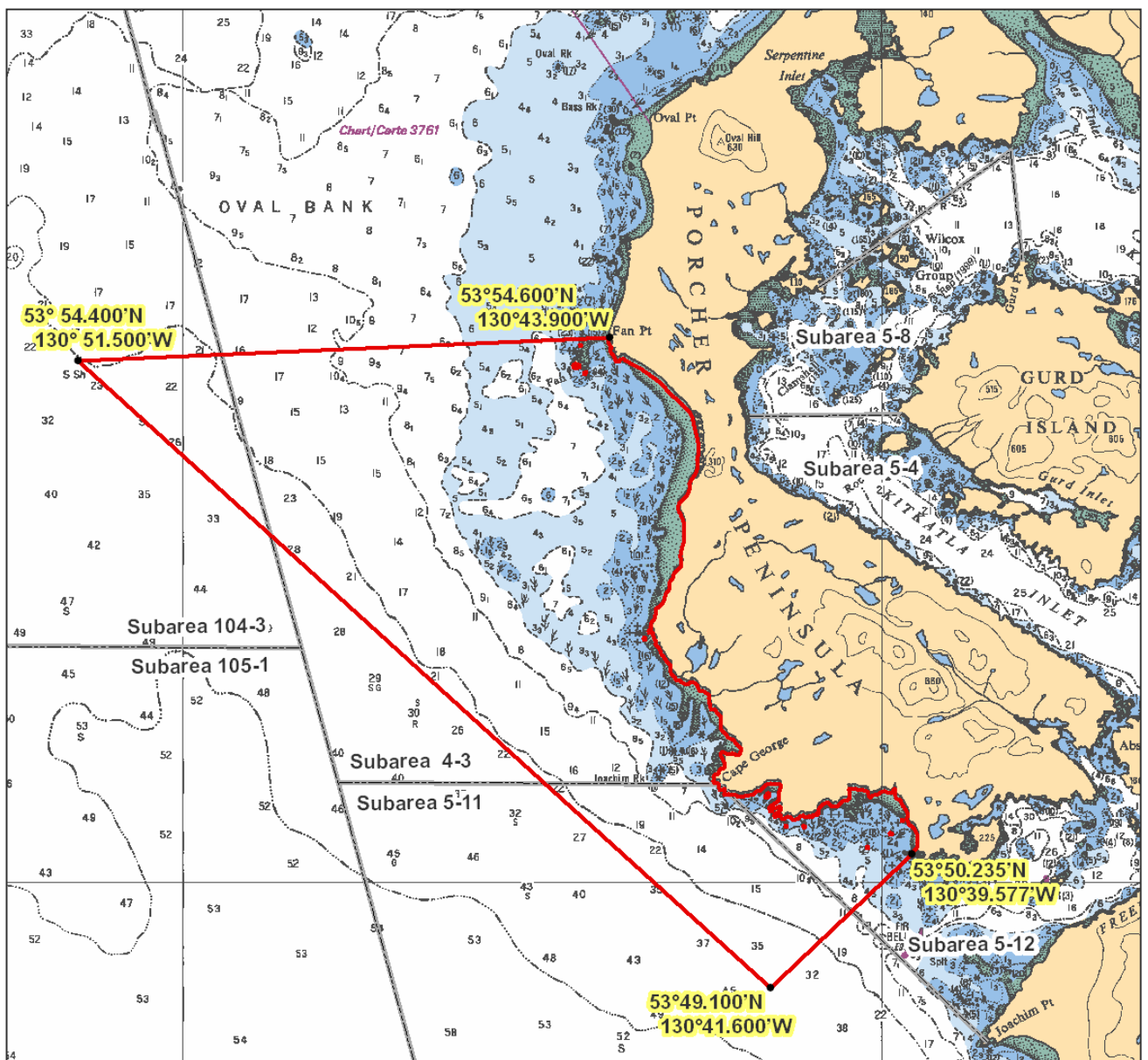
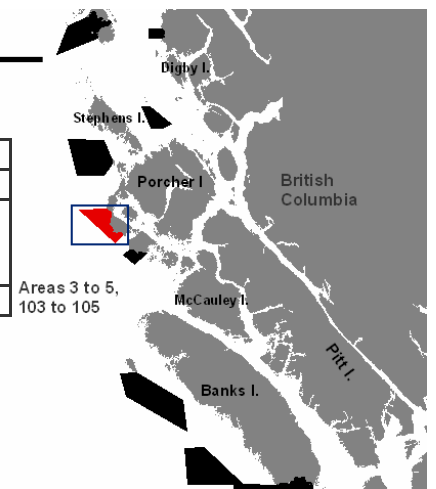
Areas 3 to 5, 103 to 105

Porcher Peninsula Chart 3927

Those waters of Subareas 4-3, 5-11, 5-12, and 104-3 that lie inside a line that:

begins at	53°54.400'N	130°51.500'W	in water
then to	53°54.600'N	130°43.900'W	Fan Point
then southerly following the shoreline of Porcher Peninsula to	53°50.235'N	130°39.577'W	Porcher Peninsula
then to	53°49.100'N	130°41.600'W	in water

then to the beginning point.



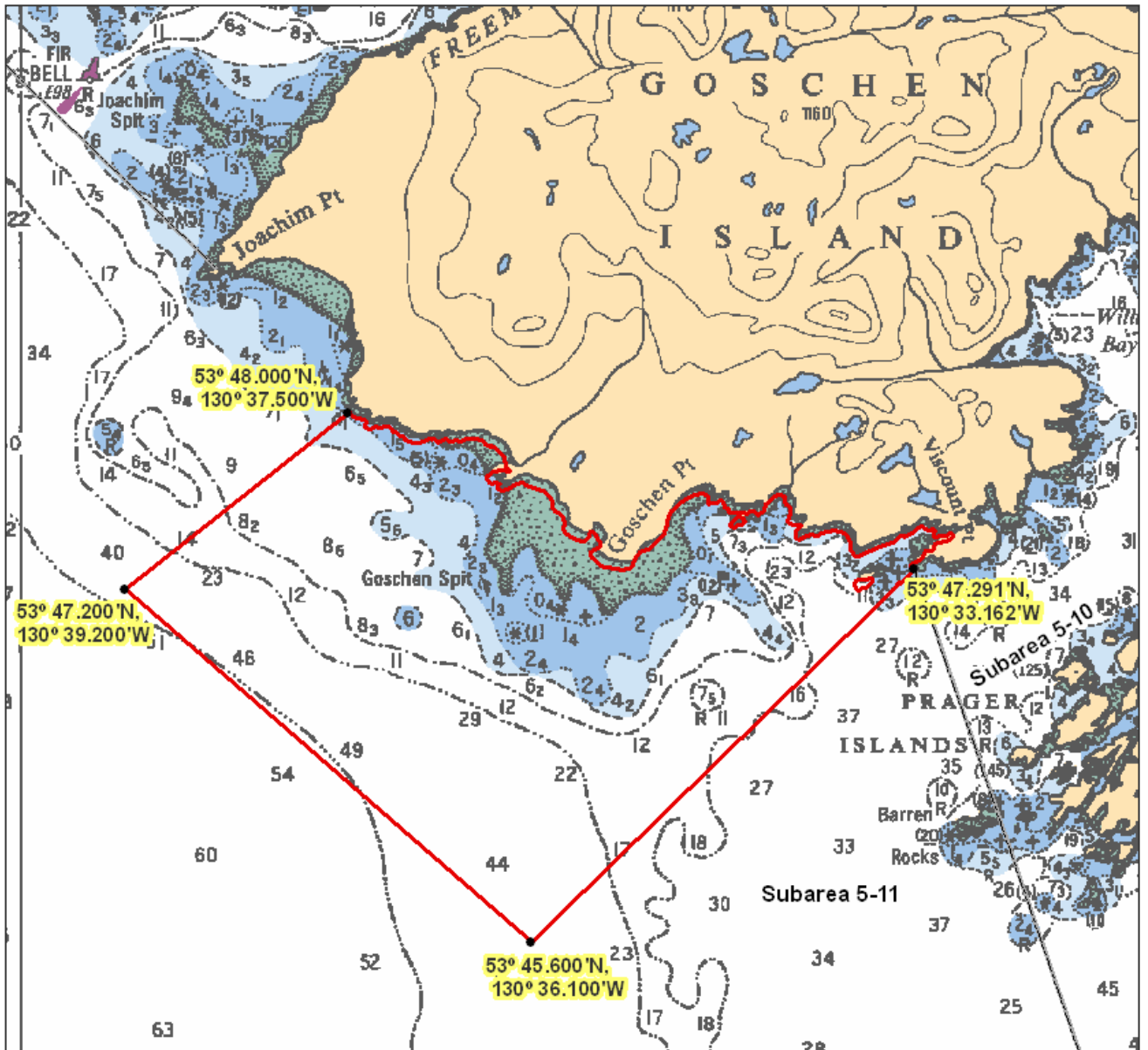
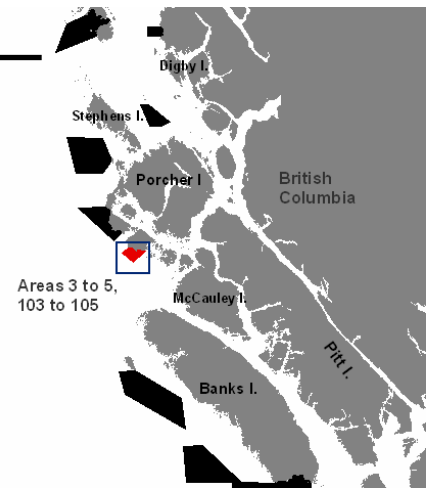
Areas 3 to 5, 103 to 105

Goschen Chart 3927

Those waters of Subarea 5-11 that lie inside a line that:

begins at	53°47.291'N	130°33.162'W	Viscount Point
then to	53°45.600'N	130°36.100'W	in water
then to	53°47.200'N	130°39.200'W	in water
then to	53°48.000'N	130°37.500'W	Goschen Island

then following the southerly shoreline of Goschen Island to the beginning point.



Areas 3 to 5, 103 to 105

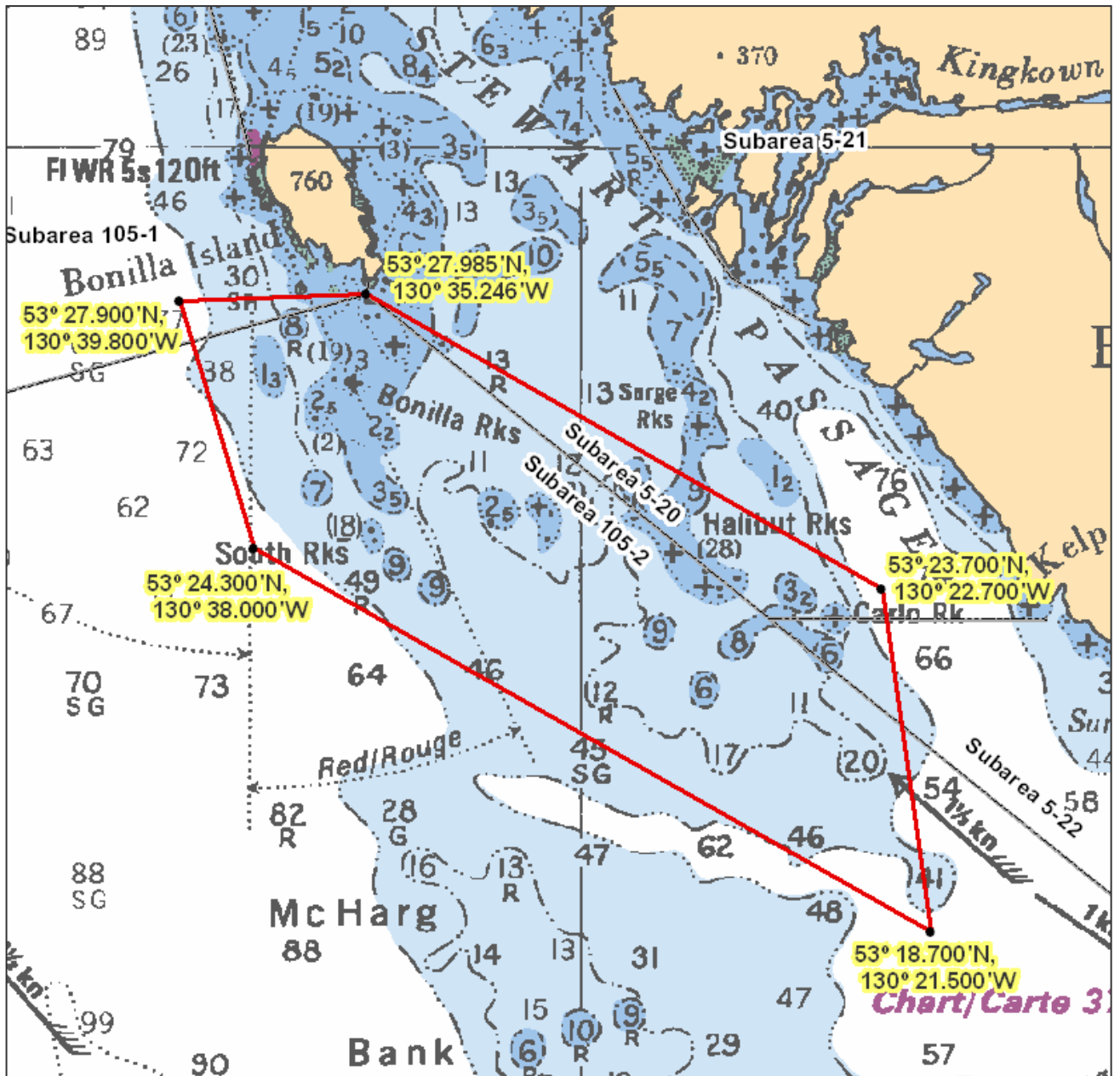
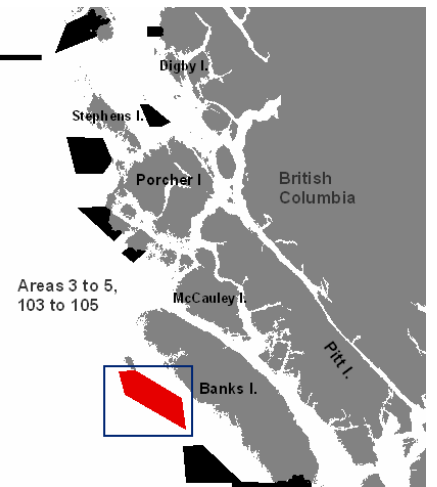
West Banks Island

Chart 3744

Those waters of Area 105 and Subareas 5-20 and 5-22 that lie inside a line that:

begins at	53°27.900'N	130°39.800'W	in water
then to	53°27.985'N	130°35.246'W	Bonilla Island
then to	53°23.700'N	130°22.700'W	in water
then to	53°18.700'N	130°21.500'W	in water
then to	53°24.300'N	130°38.000'W	in water

then to the beginning point.



Areas 3 to 5, 103 to 105

