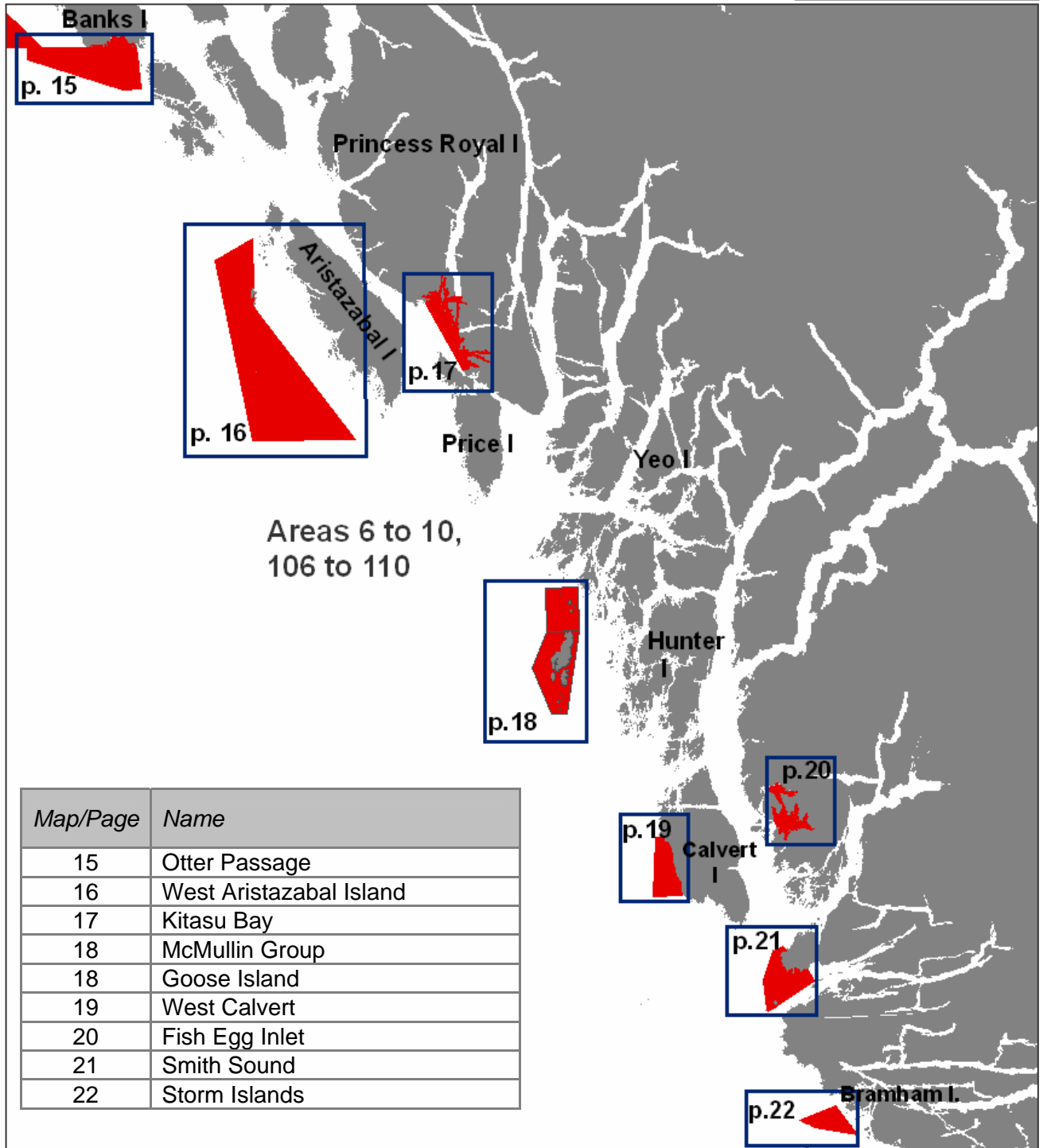


# Areas 6 to 10, 106 to 110



Map/Page	Name
15	Otter Passage
16	West Aristazabal Island
17	Kitasu Bay
18	McMullin Group
18	Goose Island
19	West Calvert
20	Fish Egg Inlet
21	Smith Sound
22	Storm Islands

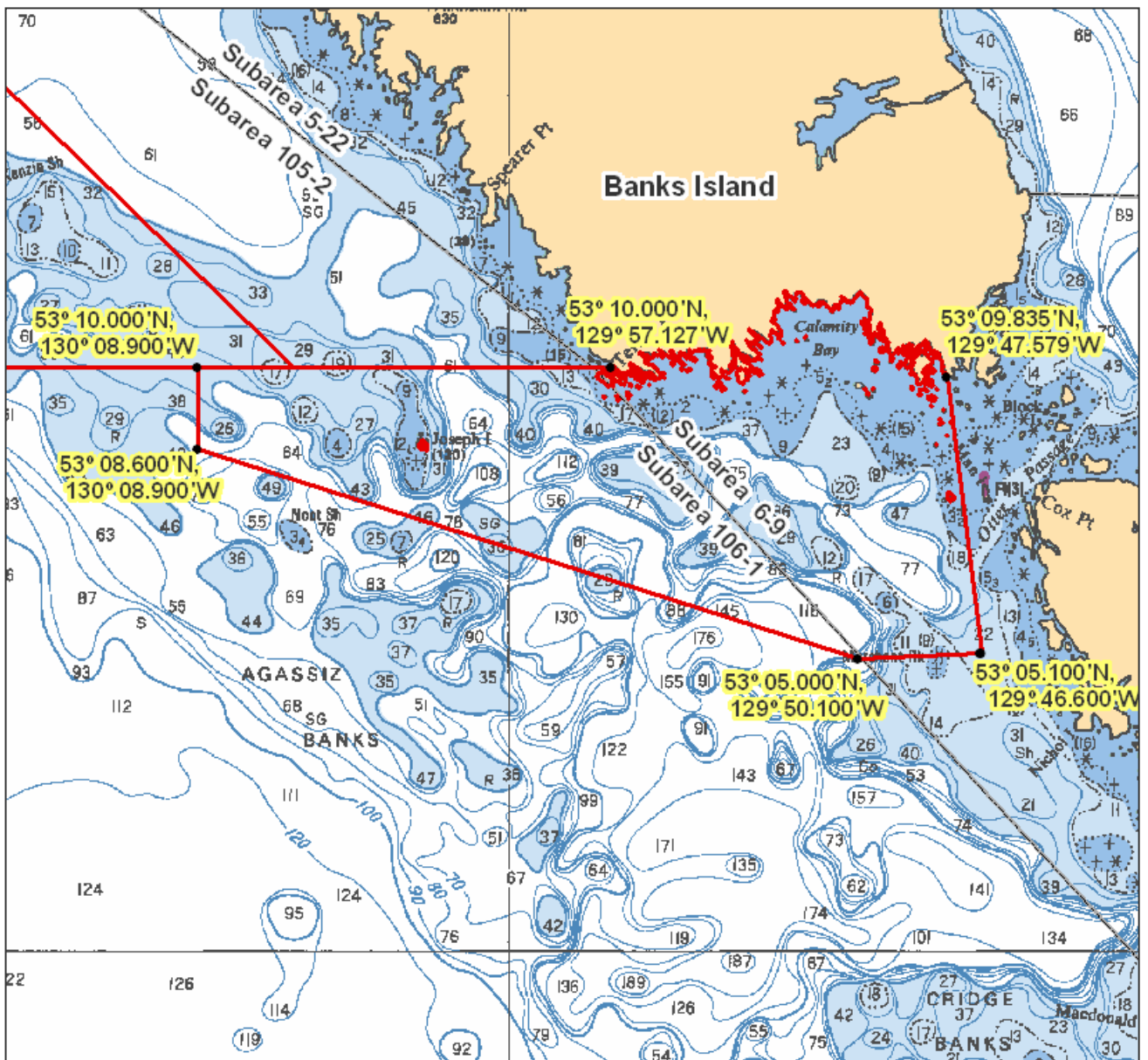
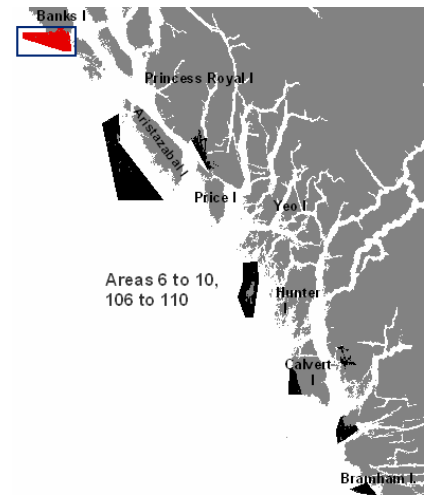
Areas 6 to 10, 106 to 110

# Otter Passage Chart 3902

Those waters of Subareas 6-9 and 106-1 that lie inside a line that:

begins at	53°09.835'N	129°47.579'W	south tip of Banks Island
then to	53°05.100'N	129°46.600'W	in water
then to	53°05.000'N	129°50.100'W	in water
then to	53°08.600'N	130°08.900'W	in water
then to	53°10.000'N	130°08.900'W	in water
then to	53°10.000'N	129°57.127'W	Terror Point

then following the southerly shoreline of Banks Island to the beginning point.



Areas 6 to 10, 106 to 110

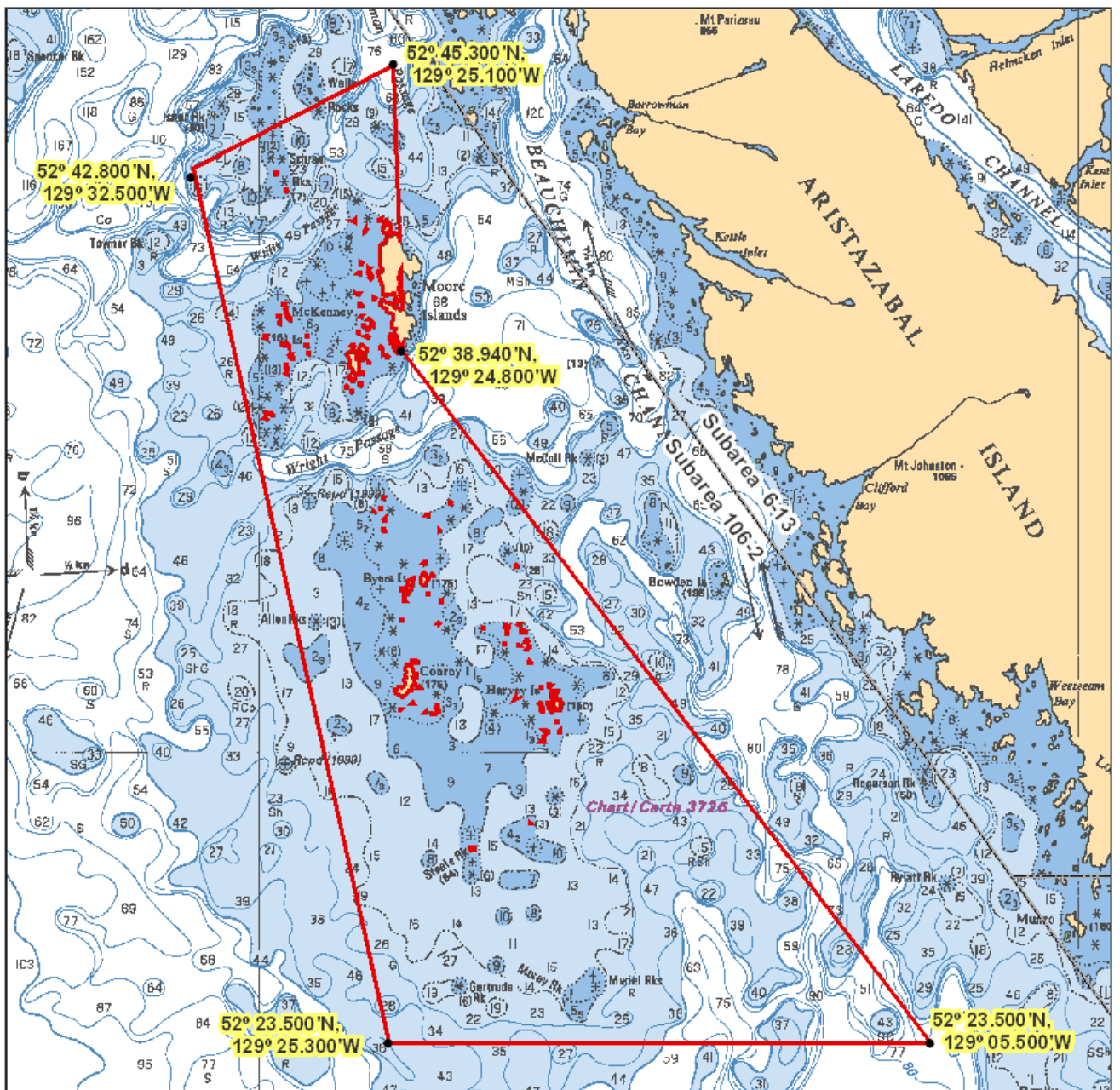
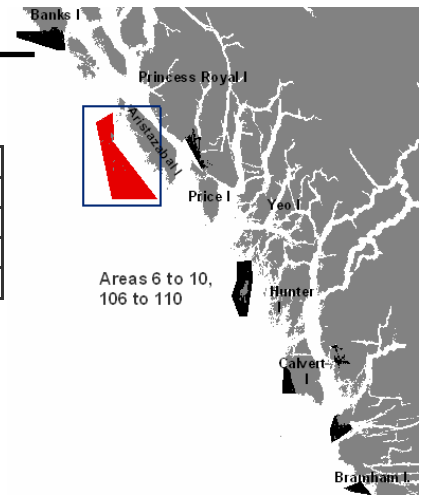
# West Aristazabal Island

# Chart 3902

Those waters of Subareas 106-2 that lie inside a line that:

begins at	52°42.800'N	129°32.500'W	in water
then to	52°45.300'N	129°25.100'W	in water
then to	52°38.940'N	129°24.800'W	southerly tip of Moore Islands
then to	52°23.500'N	129°05.500'W	in water
then to	52°23.500'N	129°25.300'W	in water

then to the beginning point.



Areas 6 to 10, 106 to 110



**McMullin Group Chart 3744**

Those waters of Subareas 7-1, 7-18 and 7-19 that lie inside a line that:

begins at	52°05.500'N	128°29.700'W	in water
then true east to	52°05.500'N	128°23.300'W	in water
then true south to	52°00.400'N	128°23.300'W	in water
then true west to	52°00.400'N	128°29.700'W	in water

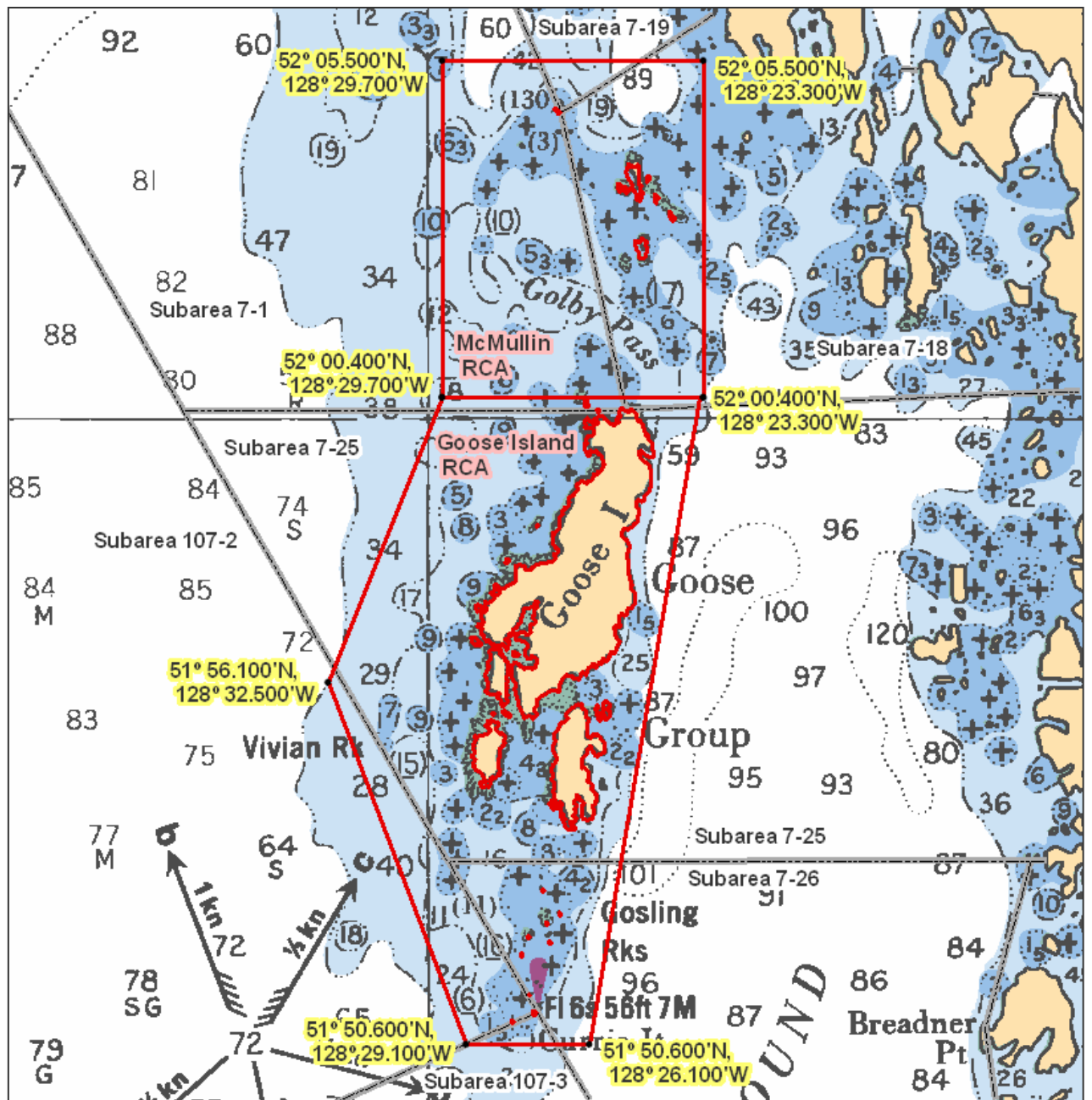
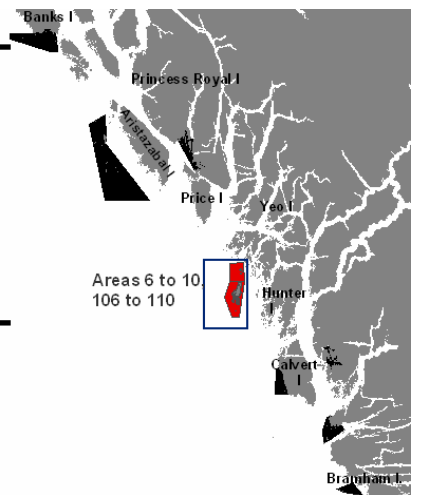
then true north to the beginning point.

**Goose Island Chart 3744**

Those waters of Subareas 7-25, 7-26, 107-2 and 107-3 that lie inside a line that:

begins at	52°00.400'N	128°29.700'W	in water
then true east to	52°00.400'N	128°23.300'W	in water
then to	51°50.600'N	128°26.100'W	in water
then true west to	51°50.600'N	128°29.100'W	in water
then to	51°56.100'N	128°32.500'W	in water

then to the beginning point.



Areas 6 to 10, 106 to 110

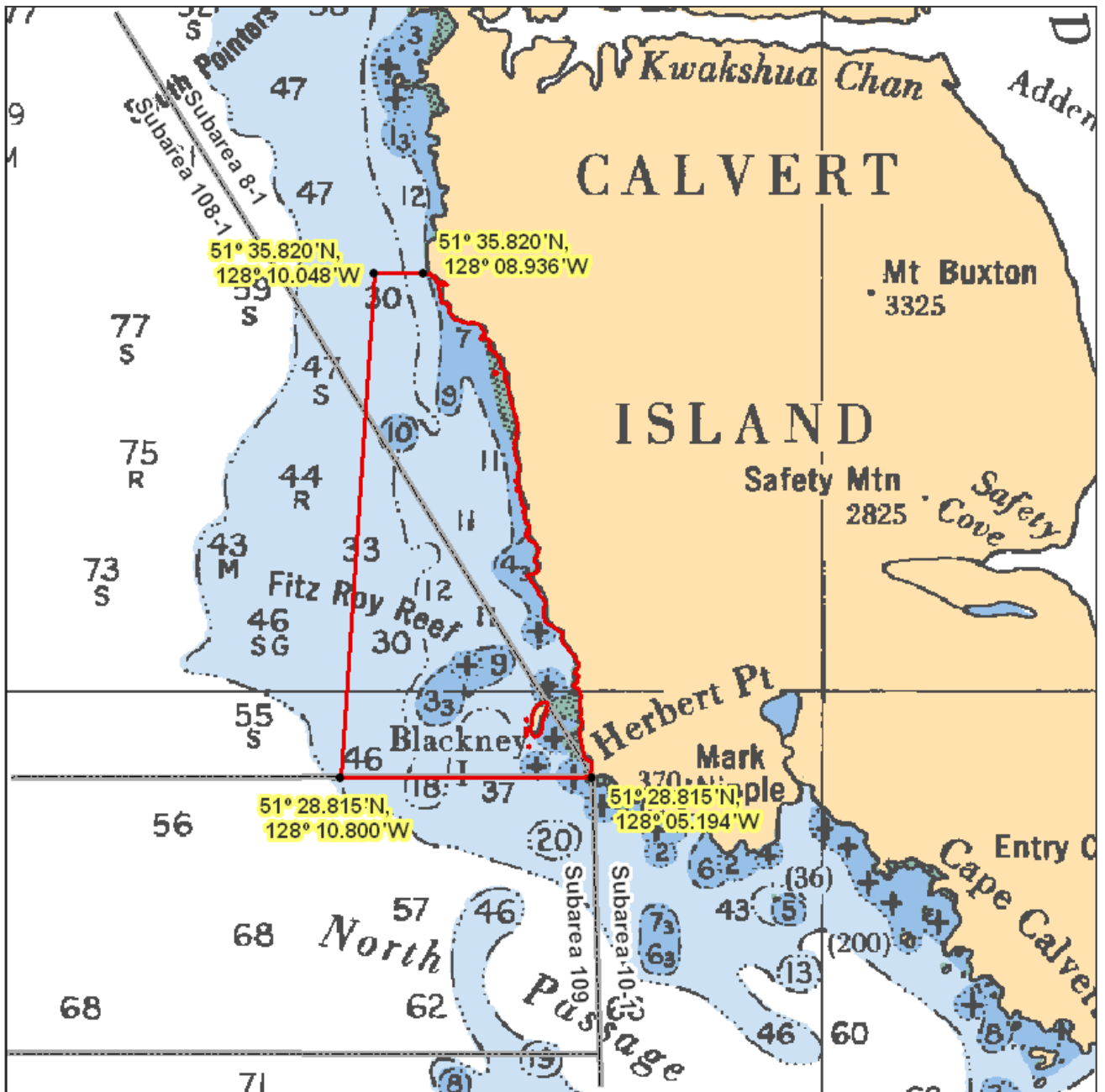
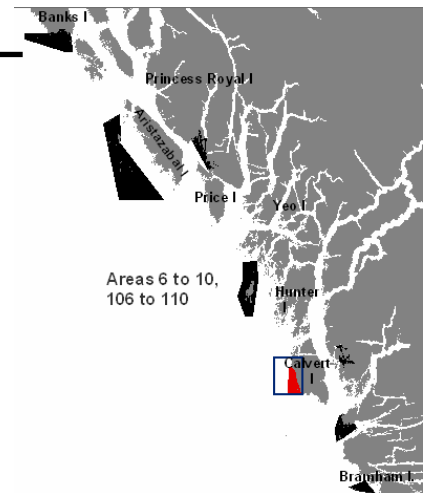
West Calvert

Chart 3744

Those waters of Subareas 8-1 and 108-1 that lie inside a line that:

begins at	51°28.815'N	128°05.194'W	Herbert Point
then to	51°28.815'N	128°10.800'W	in water
then to	51°35.820'N	128°10.048'W	in water
then to	51°35.820'N	128°08.936'W	Calvert Island

then southerly following the shoreline to the beginning point.



Areas 6 to 10, 106 to 110

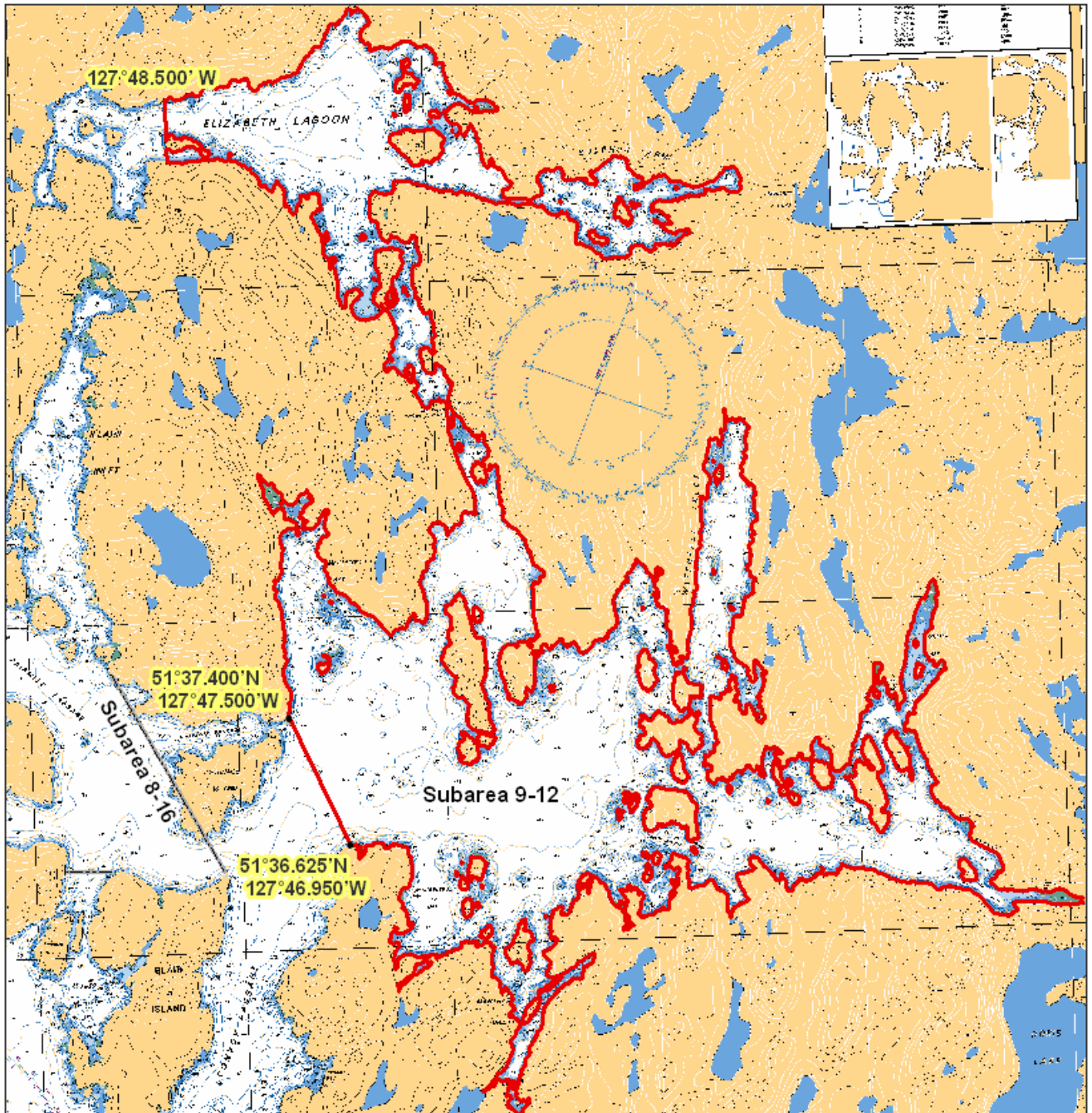
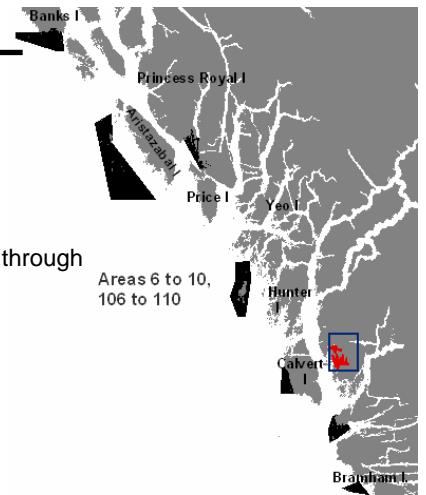
# Fish Egg Inlet

# Chart 3921

Those waters of Fish Egg Inlet in Subarea 9-12 that lie easterly of a line:

from	51°37.400'N	127°47.500'W
to	51°36.625'N	127°46.950'W

except that portion of Elizabeth Lagoon that lies westerly of the meridian passing through 127°48.500' west longitude.

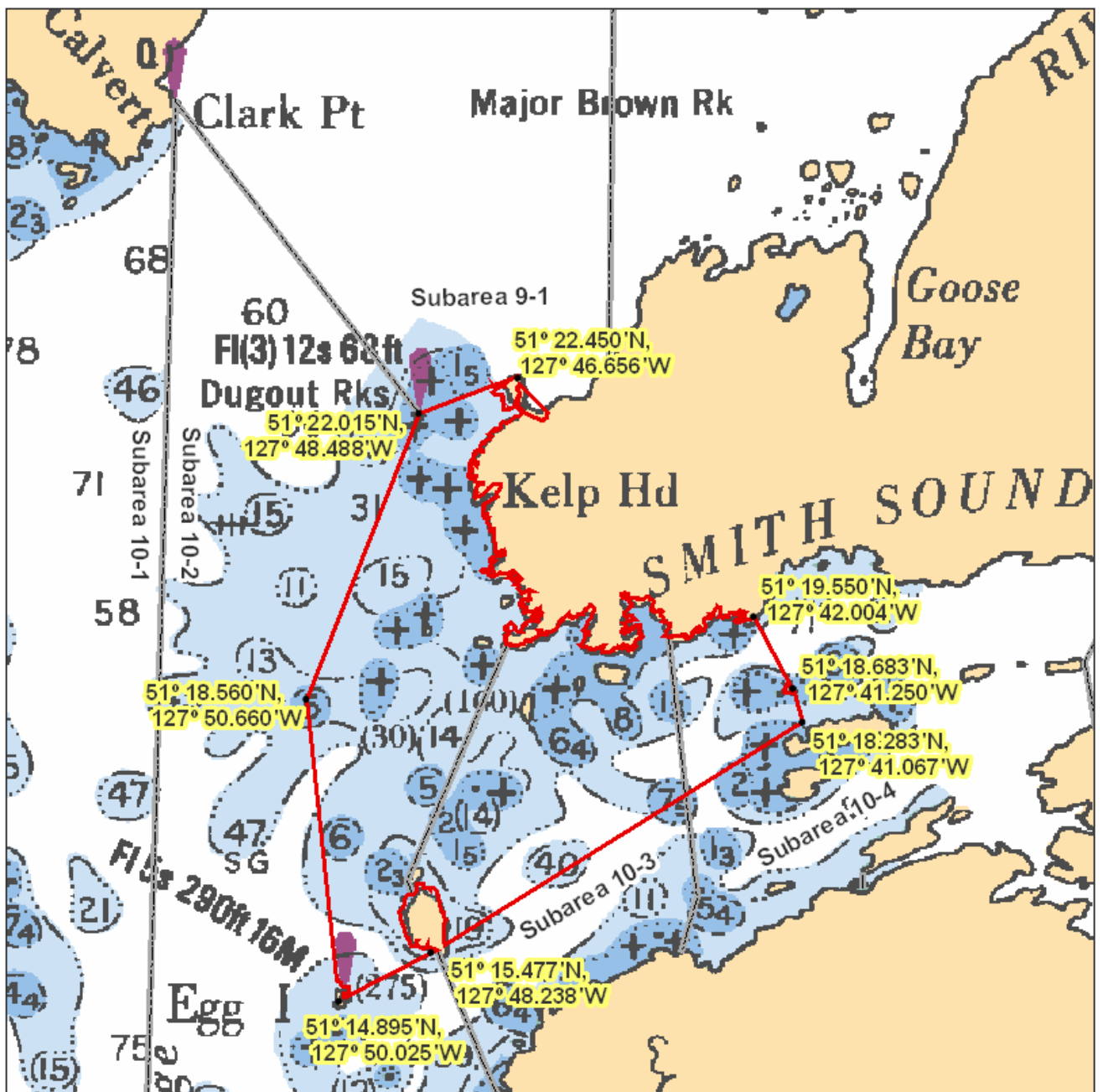
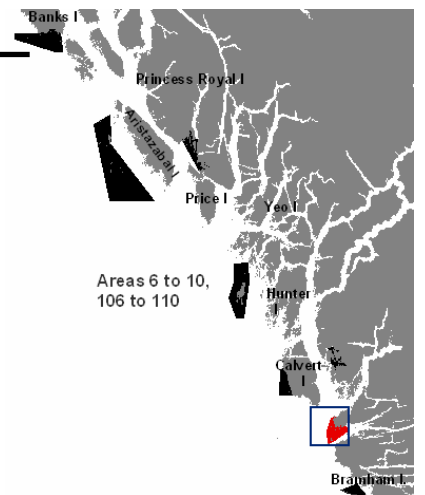


Areas 6 to 10, 106 to 110

**Smith Sound Chart 3744**

Those portions of Subareas 10-2 to 10-4 that lie shoreward of a line that:

begins at	51°22.450'N	127°46.656'W	Cranstown Point
then to	51°22.015'N	127°48.488'W	Dugout Rocks Light
then to	51°18.560'N	127°50.660'W	Thorndike Shoal
then to	51°14.895'N	127°50.025'W	Egg Island Light
then to	51°15.477'N	127°48.238'W	Table Island
then to	51°18.283'N	127°41.067'W	Cathcart Island
then to	51°18.683'N	127°41.250'W	Moss Islands
then to	51°19.550'N	127°42.004'W	Mainland



Areas 6 to 10, 106 to 110

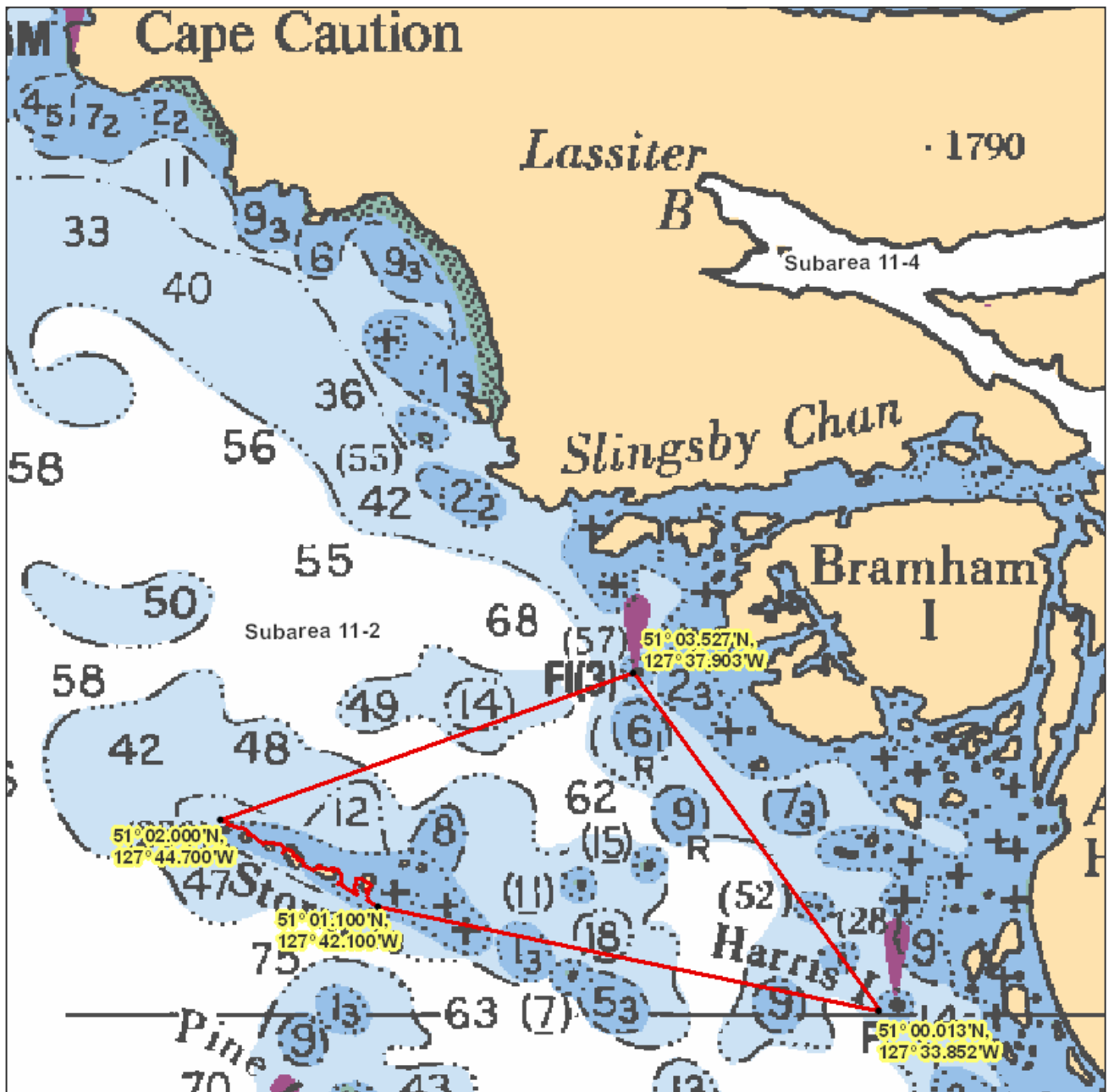
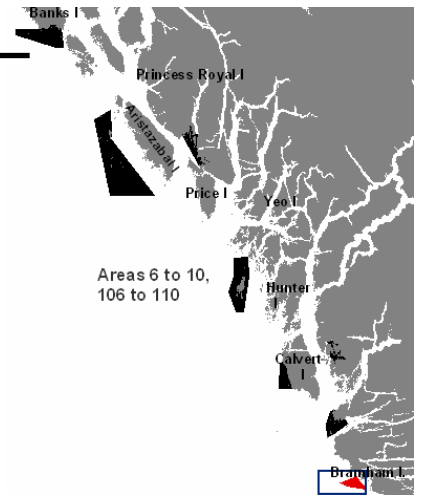
**Storm Islands**

**Chart 3744**

Those waters of Subarea 11-2 that lie inside a line that:

begins at	51°02.000'N	127°44.700'W	Storm Islands
then to	51°03.527'N	127°37.903'W	McEwan Rock Light
then to	51°00.013'N	127°33.852'W	Harris Island Light
then to	51°01.100'N	127°42.100'W	in water

then passing through the Storm Islands to the beginning point.



Areas 6 to 10, 106 to 110