

Check out some additional resources:

- 
[Oceans Protection Plan  
http://www.canada.ca/protecting-our-coasts](http://www.canada.ca/protecting-our-coasts)
- 
[Protecting Canada's Endangered Whales  
https://www.tc.gc.ca/en/campaigns/working-together/protecting-endangered-whales.html](https://www.tc.gc.ca/en/campaigns/working-together/protecting-endangered-whales.html)
- 
[Transport Canada's Interim Order \(detailed information\)  
http://www.tc.gc.ca/eng/mediaroom/interim-order-protection-killer-whales-waters-southern-british-columbia.html](http://www.tc.gc.ca/eng/mediaroom/interim-order-protection-killer-whales-waters-southern-british-columbia.html)
- 
[Transport Canada's Interim Order \(Questions and Answers, and maps\)  
https://www.tc.gc.ca/eng/mediaroom/frequently-asked-questions-io-protection-killer-whales-waters-souther-british-columbia.html](https://www.tc.gc.ca/eng/mediaroom/frequently-asked-questions-io-protection-killer-whales-waters-souther-british-columbia.html)
- 
[Vancouver Fraser Port Authority's ECHO Program  
http://www.portvancouver.com/echo](http://www.portvancouver.com/echo)
- 
[Fisheries and Oceans Canada  
http://dfo-mpo.gc.ca/campaign-campagne/protectingwhales-protegerbaleines/index-eng.html](http://dfo-mpo.gc.ca/campaign-campagne/protectingwhales-protegerbaleines/index-eng.html)
- 
[Be Whale Wise  
Bewhalewise.org](http://www.bewhalewise.org)

- 

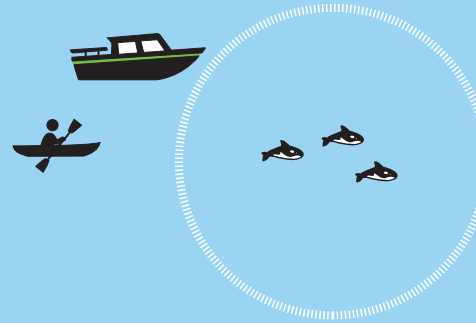
**Report violators to Fisheries and Oceans Canada:**  
**1-800-465-4336**
- 

If you have any questions about the Interim Order, please contact Transport Canada at:  
**TC.SRKW-ERS.TC@tc.gc.ca**
- 

If you have any questions about fishery closures or boating around whales, please contact Fisheries and Oceans Canada at:  
**DFO.SRKW-ERS.MPO@dfo-mpo.gc.ca**

**KEEP 400 METRES AWAY**

When you see any killer whales. It's the law!  
(around 4 football fields)



**AVOID WHALE SANCTUARY**

No fishing or boating around Swiftsure Bank, east coast of Saturna Island and south-west of North Pender Island. It's the law!



turn over for detailed map

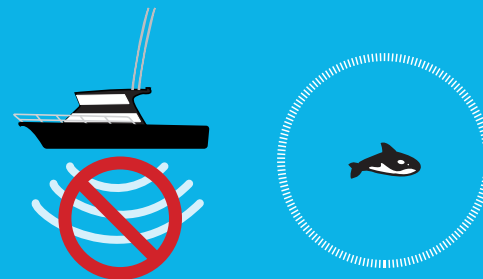
**REDUCE SPEED & AVOID FISHING**

Reduce your speed to less than 7 knots and avoid fishing when you're within 1,000 metres of a killer whale.

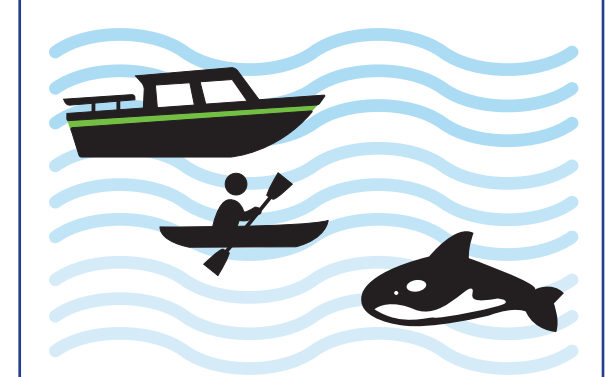


**REDUCE VESSEL NOISE**

Turn off echo sounders when not in use, and engines to neutral idle when within approach distance of a killer whale.



**Boating Around Killer Whales**  
South Coast of BC · 2019



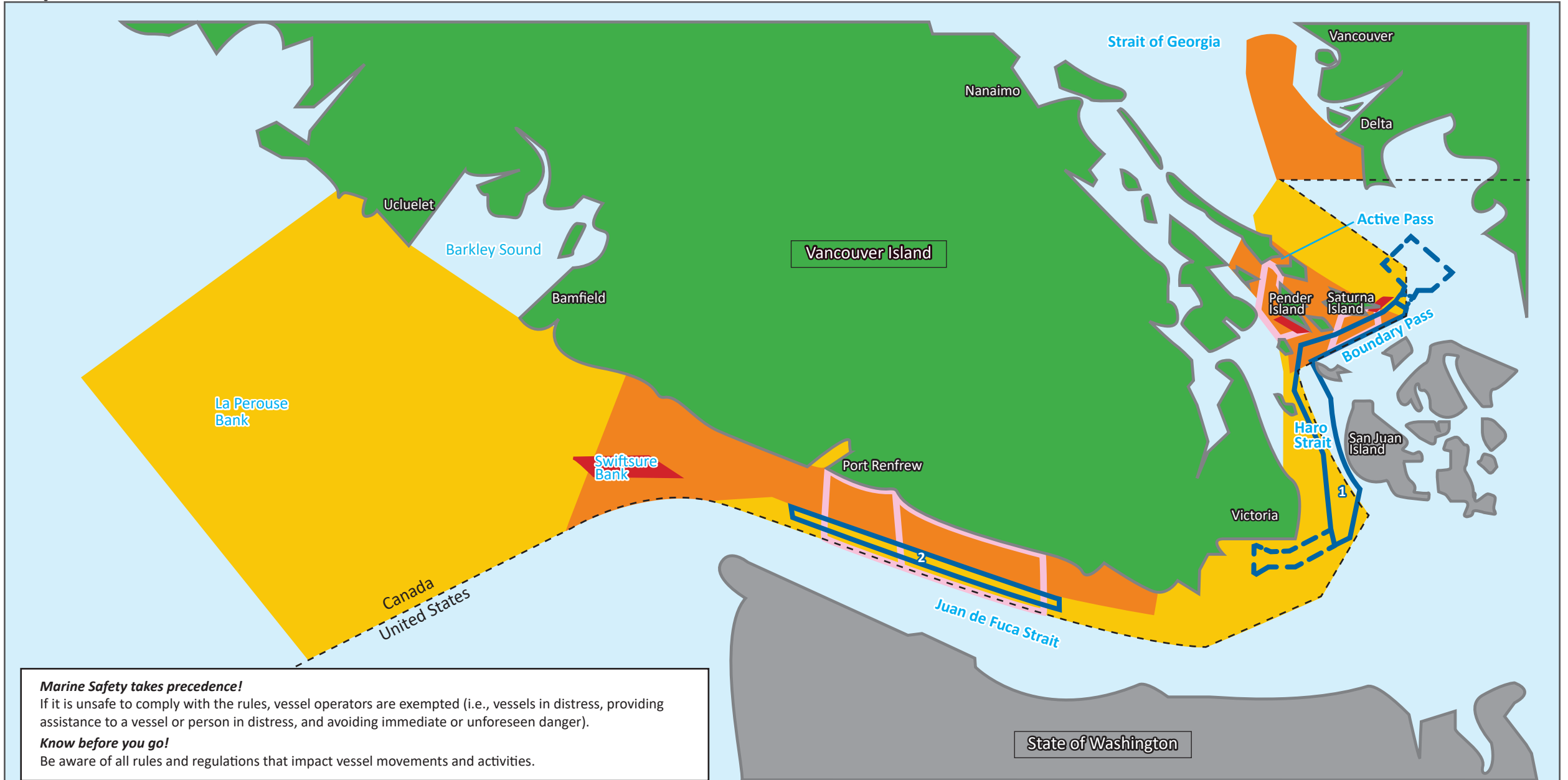
Boaters need to be aware when boating around killer whales. Always slow down when killer whales are near, if safe to do so.

- Rules that apply year-round:**
- **Keep 200 metres away** from all killer whale populations in B.C. and the Pacific Ocean.
- Rules from June 1 until October 31 in critical habitat:**
- **Keep 400 metres away** when you see any killer whales.
  - **No fishing or boating** around certain sections of Swiftsure Bank, off the east coast of Saturna Island and south-west of North Pender Island.


- Additional ways you can help:**
- Go Slow! **Reduce your speed** to less than 7 knots and avoid fishing when you're within 1,000 metres of a killer whale. Areas to be aware of include Gulf Islands, the Strait of Juan de Fuca and the Mouth of the Fraser River.
  - **Reduce noise** from boats by turning off your echo sounders when not in use, and engines to neutral idle when within 400 metres of a killer whale.

Please help protect Southern Resident Killer Whales! They live in the southern coast of British Columbia and are endangered.

# Map of South Coast of Vancouver Island, British Columbia



**Marine Safety takes precedence!**  
 If it is unsafe to comply with the rules, vessel operators are exempted (i.e., vessels in distress, providing assistance to a vessel or person in distress, and avoiding immediate or unforeseen danger).  
**Know before you go!**  
 Be aware of all rules and regulations that impact vessel movements and activities.

<p><b>In all Yellow and Orange Areas (critical habitat), vessels:</b></p> <ul style="list-style-type: none"> <li>• Must keep 400 m away except for vessels in transit. Some whale watching operators can view non-Southern Resident Killer Whales up to 200 m if they meet specific conditions</li> <li>• Should turn off echo sounders when not in use</li> <li>• Should turn engine to neutral idle when within 400 m of a whale</li> </ul>	<p><b>In all Orange Areas, vessels:</b></p> <ul style="list-style-type: none"> <li>• Should avoid fishing within 1000 m of killer whales</li> <li>• Should go slow (7 knots or less) within 1000 m of killer whales</li> </ul>	<p><b>In all Red Areas, vessels:</b></p> <ul style="list-style-type: none"> <li>• Must avoid Interim Sanctuary Zones (Accessing a residence or business on N. Pender or Saturna Island; vessel/person fishing for FSC or domestic purposes pursuant to a treaty; Indigenous persons exercising an existing right, other than for fishing for non-commercial purposes, are exempt)</li> </ul>	<p><b>Pink Outline Areas:</b></p> <ul style="list-style-type: none"> <li>• Fishery closures for recreational and commercial salmon (August 1-October 31)</li> </ul> <p><b>Blue Outline Areas (coordinated by ECHO Program) (Large Commercial Vessel Measures - Voluntary)</b></p> <ol style="list-style-type: none"> <li>1. Haro Strait and Boundary Pass vessel slowdown trial</li> <li>2. Strait of Juan de Fuca inshore lateral displacement trial</li> </ol>	<p>Visit: <a href="http://www.pac.dfo-mpo.gc.ca/fm-gp/maps-cartes/srkw-ers/index-eng.html">http://www.pac.dfo-mpo.gc.ca/fm-gp/maps-cartes/srkw-ers/index-eng.html</a> or use QR Code to view detailed maps online</p> 
---	--	--	--	---