

FISHERIES AND OCEANS CANADA

FISHERY NOTICE

Recreational Halibut and Groundfish Regulation Change for 2010

In order to manage within domestic halibut allocations, the following changes will be implemented in the 2010 recreational fishery:

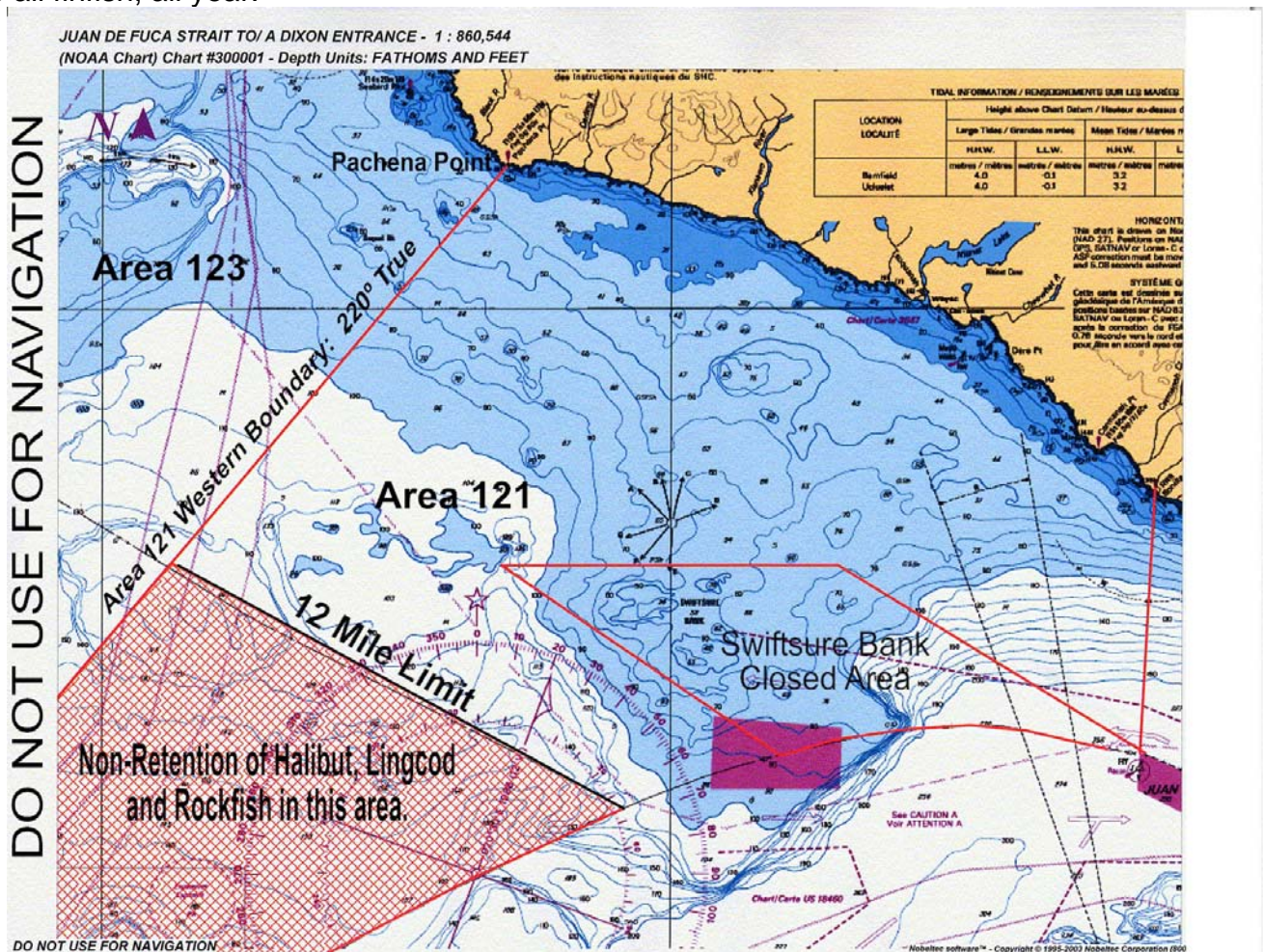
Coastwide Limits: Effective February 1, 2010 :
Daily limit of one. Possession limit of two.

Areas 121, 23 and 123:
 Effective February 1 to December 31:

- No person shall fish for or retain halibut, rockfish and lingcod in Area 121 outside the 12 nautical mile limit seaward of a line that begins at 48°34.000'N and 125°17.386'W and continues south easterly at a bearing of 116 degrees True to a point at 48°28.327'N and 125°01.687'W. (See map below.)
- Electronic licence conditions will be continued as follows: "Only a Canadian resident may fish for or retain halibut under an electronic licence in management Areas 121, 23 and 123."

Area 121:

A reminder to recreational harvesters, that the waters of Swiftsure Bank, inside a line from 48°34.00'N and 125°06.00'W, thence to 48°34.00'N and 124°54.20'W, thence to 48°29.62'N and 124°43.40'W, thence following the International Boundary between Canada and the U.S. to 48°29.55'N and 124°56.20'W, thence in a straight line to the point of commencement, are closed to all finfish, all year.



DO NOT USE FOR NAVIGATION

Non-Retention of Halibut, Lingcod and Rockfish in this area.

For more information on the 2010 Halibut regulations, visit our website:

www.pac.dfo-mpo.gc.ca/fm-gp/rec/opportunities-possibilites/fin-nageoire-eng.htm

Click on FN0032 or contact Devona Adams 604-666-3271 or Tamee Mawani 604-666-9033

Maps of Statistical Areas can be viewed online or in the BC Tidal Water Sport Fishing Guide.



Fisheries and Oceans
Canada

Pêches et Océans
Canada

