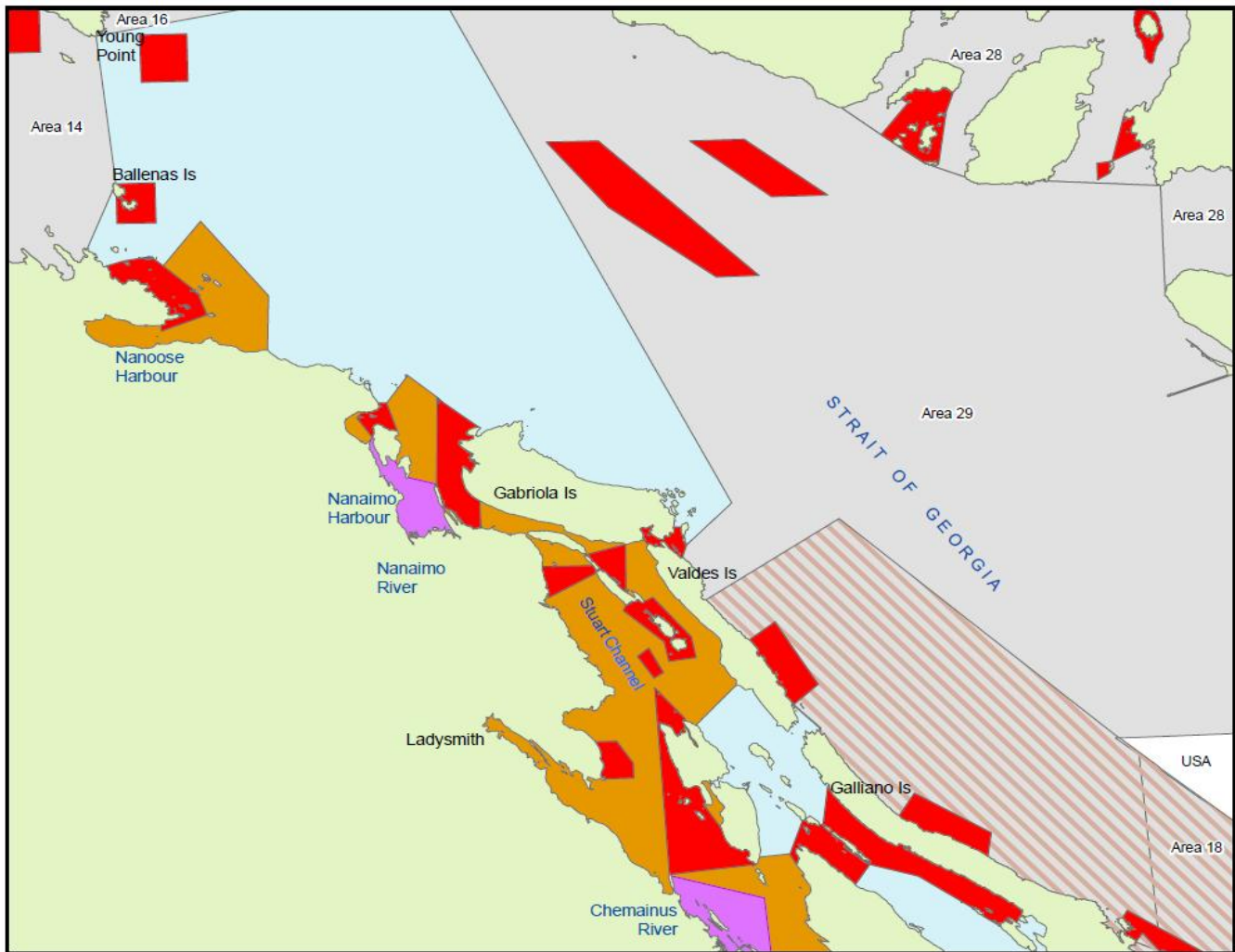










# Area 17 Nanoose, Nanaimo to Chemainus 2011 COHO & CHINOOK OPENINGS AND OTHER CLOSURES

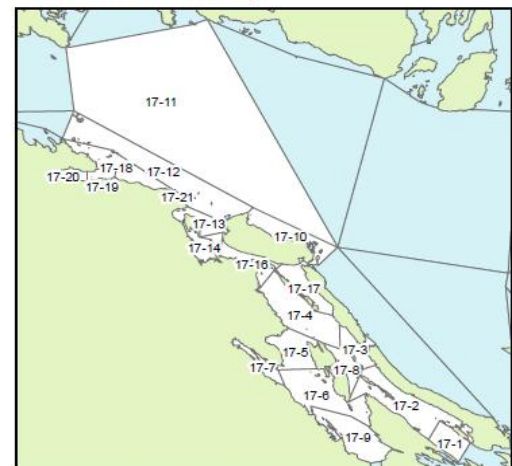


### Area 17 General Info:

- Jan 1 - May 31 Coho Non-Retention
- Jan 1 - Dec 31 Two (2) Chinook per day, Minimum size 62cm (Unless otherwise specified)

-  May 5 - July 15 Two (2) Chinook per day of which only (1) may be greater than 67cm. The minimum size limit is 62cm.
-  June 1 - Dec 31 Two (2) Hatchery marked Coho per day
-  Jan 1 - Dec 31 Rockfish Conservation Areas
-  Jul 15 - Oct 25 Finfish Closure
-  Aug 1 - Oct 15 Chinook Non-Retention
-  Areas 14, 16, 18, 28 & 29 Refer to Appropriate Public Notices for Area

### PFMA Overview Map



Visit the DFO Pacific Region Recreational Fishing website at [www.pac.dfo-mpo.gc.ca/fm-gp/rec](http://www.pac.dfo-mpo.gc.ca/fm-gp/rec)  
 General Fishing Information Line 1-866-431-3474 (1-866-431-FISH)  
 Local DFO Office 250-754-0230



<b>Area 17</b>			
Entire Area	Chinook	Jan 01 - Dec 31	2 per day, minimum size limit is 62 cm
In Subarea 17-4, except for those waters southeasterly of a line from Shingle Point to Pilkey Point and Subareas 17-5 to 17-7, 17-9, 17-13 to 17-17 [Northumberland Channel, Pylades Channel, Stuart Channel], thence a portion of Subarea 17-12 inside a line from Tinson Point to Snake Island Light (RCA Boundary) to the southern Five Finger Island group to the RCA boundary starting Horswell Channel Buoy (49 12.93N, 123 56.03W) to north of Horswell Bluff (49 12.93N, 123 56.47W).	Chinook	Aug 01 - Oct 15	<i>You may not retain Chinook.</i>
In Subareas 17-18 to 17-20 and a portion of 17-12 those waters inside a line from Icarus Point on Vancouver Island true north 2 nm, thence northwesterly to the Navy buoy in Ballenas Channel, thence to Nankivell Point at the entrance to Schooner Cove on Vancouver Island			

**FINFISH CLOSURES**

<b>Area 17</b>	
A portion of Subarea 17-14 southerly from a line from Shaft Point on Newcastle Island to Pimbury Point on Vancouver Island and including a portion of Subarea 17-15 southwesterly of a line from Duke Point to Gallows Point on Protection Island	Jul 15 - Oct 25



In Area 17, that portion of the Nanaimo River from the Cedar Bridge to the white square boundary signs approximately 400 m downstream of the Cedar Bridge.	Oct 25 - Nov 30
In Area 17, the tidal waters of the Chemainus River and off the Chemainus River mouth, inside a line commencing at Bare Point on Vancouver Island to the light on North Reef, to Sherard Point on Vancouver Island, thence following the shoreline northerly to a boundary sign on the Chemainus River near the Bald Eagle Campground, thence across the river to the opposite bank, thence following the Vancouver Island shoreline northerly to the beginning point.	Jul 15 - Oct 31

Refer to the following website link for a description of the Area and Subarea maps:

[www.pac.dfo-mpo.gc.ca/fm-gp/maps-cartes/areas-secteurs/index-eng.htm](http://www.pac.dfo-mpo.gc.ca/fm-gp/maps-cartes/areas-secteurs/index-eng.htm)

**Sport anglers are encouraged to participate in the Salmon Head Recovery Program by labelling and submitting heads from adipose fin-clipped (hatchery marked) Chinook and Coho salmon. The location of the Head Recovery Depots can be found at:**

[www.pac.dfo-mpo.gc.ca/fm-gp/rec/taq-etiquette/prize-prix-eng.htm](http://www.pac.dfo-mpo.gc.ca/fm-gp/rec/taq-etiquette/prize-prix-eng.htm)

**CLOSURE TO FISHING FOR ALL FINFISH**

Sites designated as *Rockfish Conservation Areas* are closed to fishing for all finfish (including salmon). For more information regarding Rockfish Conservation Areas go to the DFO website:

[www.pac.dfo-mpo.gc.ca/fm-gp/rec/restricted-restreint/rca-acs-eng.htm](http://www.pac.dfo-mpo.gc.ca/fm-gp/rec/restricted-restreint/rca-acs-eng.htm)

**NOTES**

The combined aggregate daily limit for Pacific Salmon is four (4) per day.  
The possession limit is twice the daily limit.  
When fishing for salmon, anglers are required to use barbless hooks.

**DEFINITIONS**

**Hatchery marked or marked”** means a fish that has a healed scar in place of the adipose, pelvic, or pectoral fin, or in place of a maxillary.

**Don't Hesitate to Report Fishing Violations 1-800-465-4336**