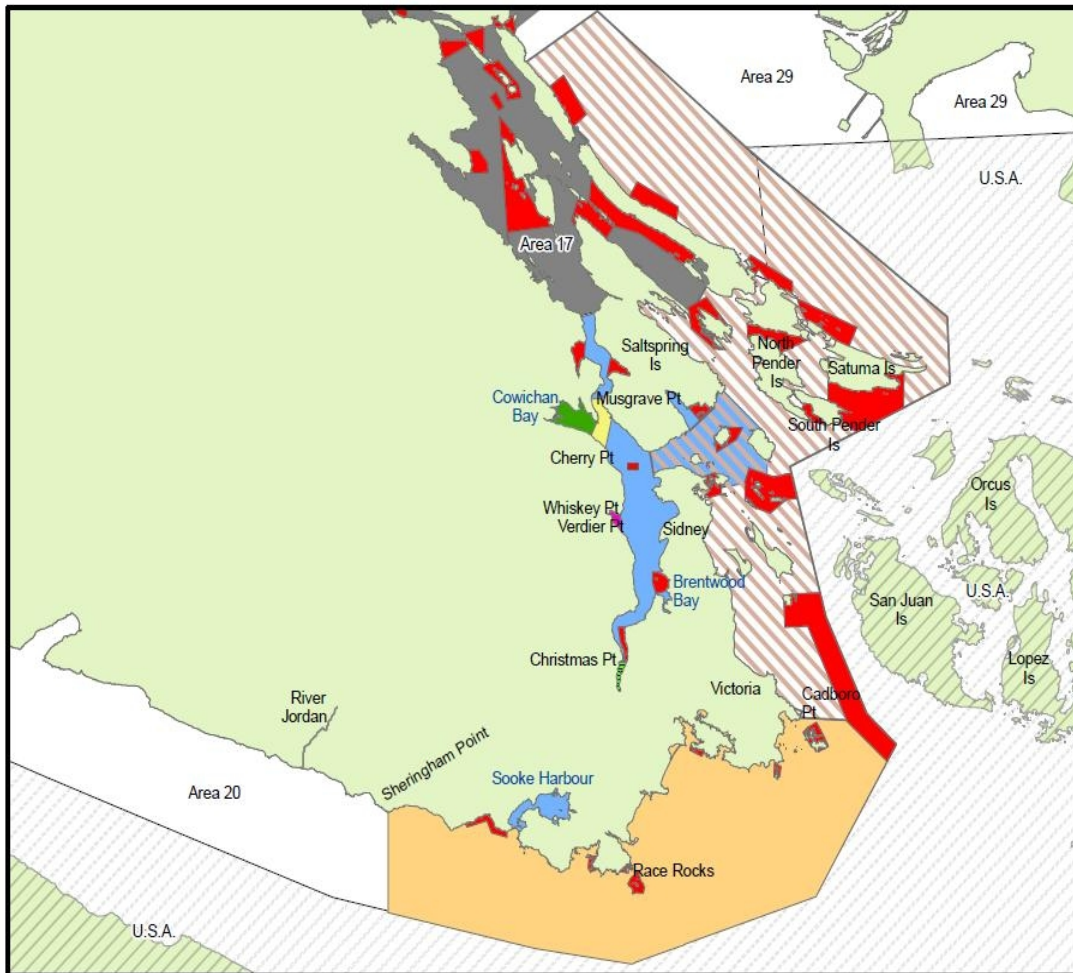


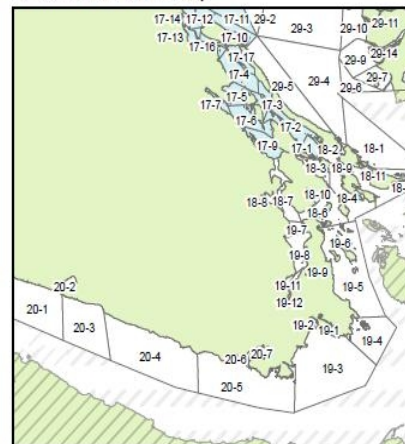


# Areas 18, 19, 20 and Subareas 29-4 & 29-5 Cowichan to Victoria 2011 COHO & CHINOOK OPENINGS AND OTHER CLOSURES



- Jan 1 - Dec 31 Finfish Closure (Rockfish Conservation Areas)
- Aug 1 - Oct 31 Finfish Closure
- Aug 1 - Oct 15 Finfish Closure
- Aug 1 - Oct 15 Chinook Non-Retention
- Sept 15 - Nov 30 Finfish Closure
- March 2 - June 17 Two (2) Chinook per day which may be Wild or Hatchery marked between 45cm and 67cm or Hatchery marked only over 67cm
- June 18 - July 15 Two (2) Chinook per day of which only one (1) may be greater than 67cm. The minimum size limit is 45cm.
- May 5 - July 15 Two (2) Chinook per day of which only one (1) may be greater than 67cm. The minimum size limit is 62cm.
- Sept 1 - Nov 30 Finfish Closure
- Area 17 Refer to Area 17 Public Notices

PFMA Overview Map





<b>Area 18</b>			
<b>Unless otherwise described below.</b>	Chinook	Jan 1- Dec 31	2 per day, minimum size limit is 62 cm
	Coho	June 1–Dec 31	2 per day, Hatchery Only minimum size limit is 30 cm
In Subareas 18-7 and 18-8, that portion of Subarea 18-7 that lies <b>northerly</b> of a line from a square white boundary sign on Vancouver Island, near 48°46.179'N and 123°34.654'W, to a square white boundary sign on Saltspring Island SE of Burial Islet, near 48°45.992'N and 123°33.777'W, and <b>southerly</b> of a line from a square white boundary sign on Saltspring Island approximately 1.5 nautical miles ESE of Musgrave Point, near 48°43.982'N and 123°31.418'W, to a square white boundary sign on Vancouver Island approximately 0.5 nautical miles NW of Cherry Point, near 48°43.197'N and 123°33.708'W.	Chinook	Aug 1-Oct 15	You may not retain Chinook.
In Subareas 18-6 to 18-8, 18-10 [Fulford Harbour, Satellite Channel, Shute Passage, Sansum Narrows]	Chinook	Aug 1-Oct 15	You may not retain Chinook.
In Subarea 18-10, the waters of Fulford Harbour inside or NW of a line between a fishing boundary sign located near the navigation light and Jackson Rock on the north shore of Fulford Harbour across the Harbour to a boundary sign on the opposite shore.	All	Oct 10-Jan 15	Only a single-pointed hook may be used.
Subarea 18- 8, inside of a line between Separation Point and Cherry Point.	Coho	Nov 1-Dec 31	2 per day. Hatchery or Wild

<b>Area 19</b>			
Subareas 19-1 to 19-4 [south of Cadboro Point]	Chinook	July 16 – Dec 31	Minimum size limit is 45 cm
Subareas 19-5 to 19-12 [north of Cadboro Point]	Chinook	Jan 1- Dec 31	Minimum size limit is 62 cm
In Subareas 19-7 to 19-10 [Saanich Inlet].	Chinook	Aug 1-Oct 15	<i>You may not retain Chinook.</i>
Area 19	Coho	June 1 – Sep. 30	2 per day, hatchery only, min. 30 cm
Area 19	Coho	Oct 1-Dec 31	2 per day, only one of which maybe wild



<b>Area 20 (Eastern Portion Only – see full Area 20 notice for additional information on Western portion, which includes subareas 20-1 to 20-4)</b>			
Subarea 20-5 to 20-7, except as noted below.	Chinook	July 16 – Dec 31	2 per day, minimum size 45 cm
Subareas 20-6 and 20-7 [Sooke Inlet, Sooke Harbour and Sooke Basin, northerly of a line from Muir Point to Possession Point]	Chinook	Aug 1 - Oct 15	<i>You may not retain Chinook.</i>
Area 20-5 to 20-7	Coho	June 1 – Sep. 30	2 per day, hatchery only, min. 30 cm
Area 20-5 to 20-7	Coho	Oct 1 - Dec 31	2 per day, only one of which maybe wild

## **FINFISH CLOSURES**

<b>Area 18</b>	
In Area 18, the waters of Cowichan Bay inside a line from a fishing boundary sign near Separation Point on Vancouver Island to Wilcuma Wharf. (Green on Map)	Aug 1-Oct 31
In Subareas 18-7 and 18-8, that portion of Subarea 18-8 that lies easterly of a line from a square white boundary sign at Separation Point to a square white boundary sign at Wilcuma Wharf in Cowichan Bay; and that portion of Subarea 18-7 that lies southerly of a line from a square white boundary sign on Vancouver Island, near 48°46.179'N and 123°34.654'W, to a square white boundary sign on Saltspring Island SE of Burial Islet, near 48°45.992'N and 123°33.777'W, <b>and</b> northerly of a line from a square white boundary sign on Saltspring Island approximately 1.5 nautical miles ESE of Musgrave Point, near 48°43.982'N and 123°31.418'W, to a square white boundary sign on Vancouver Island approximately 0.5 nautical miles NW of Cherry Point, near 48°43.197'N and 123°33.708'W. (Yellow on Map)	Aug 1-Oct 15
<b>Area 19</b>	
In Area 19, the waters of Saanich Inlet inside a line from Whiskey Point to Verdier Point.	Sep 15-Nov 30
Subarea 19-12. [Saanich Inlet, south of Christmas Point]	Sep 1-Nov 30

Refer to the following website link for a description of the Area and Subarea maps:

[www.pac.dfo-mpo.gc.ca/fm-gp/maps-cartes/areas-secteurs/index-eng.htm](http://www.pac.dfo-mpo.gc.ca/fm-gp/maps-cartes/areas-secteurs/index-eng.htm)

Visit the DFO Pacific Region Recreational Fishing website at [www.pac.dfo-mpo.gc.ca/fm-gp/rec](http://www.pac.dfo-mpo.gc.ca/fm-gp/rec)  
 General Fishing Information Line 1-866-431-3474 (1-866-431-FISH)  
 Local DFO Office 250-746-6221 (Duncan) or 250-363-3252 (Victoria)



## **CLOSURE TO FISHING FOR ALL FINFISH**

**Sites designated as *Rockfish Conservation Areas* are closed to fishing for all finfish (including salmon).**

For more information regarding Rockfish Conservation Areas go to the DFO website:

[www.pac.dfo-mpo.gc.ca/fm-gp/rec/restricted-restreint/rca-ac-s-eng.htm](http://www.pac.dfo-mpo.gc.ca/fm-gp/rec/restricted-restreint/rca-ac-s-eng.htm)

## **NOTES**

The combined aggregate daily limit for Pacific Salmon is four (4) per day.

The possession limit is twice the daily limit.

When fishing for salmon, anglers are required to use barbless hooks.

## **DEFINITIONS**

“**Hatchery marked or marked**” means a fish that has a healed scar in place of the adipose, pelvic, or pectoral fin, or in place of a maxillary.

**Don't Hesitate to Report Fishing Violations 1-800-465-4336**