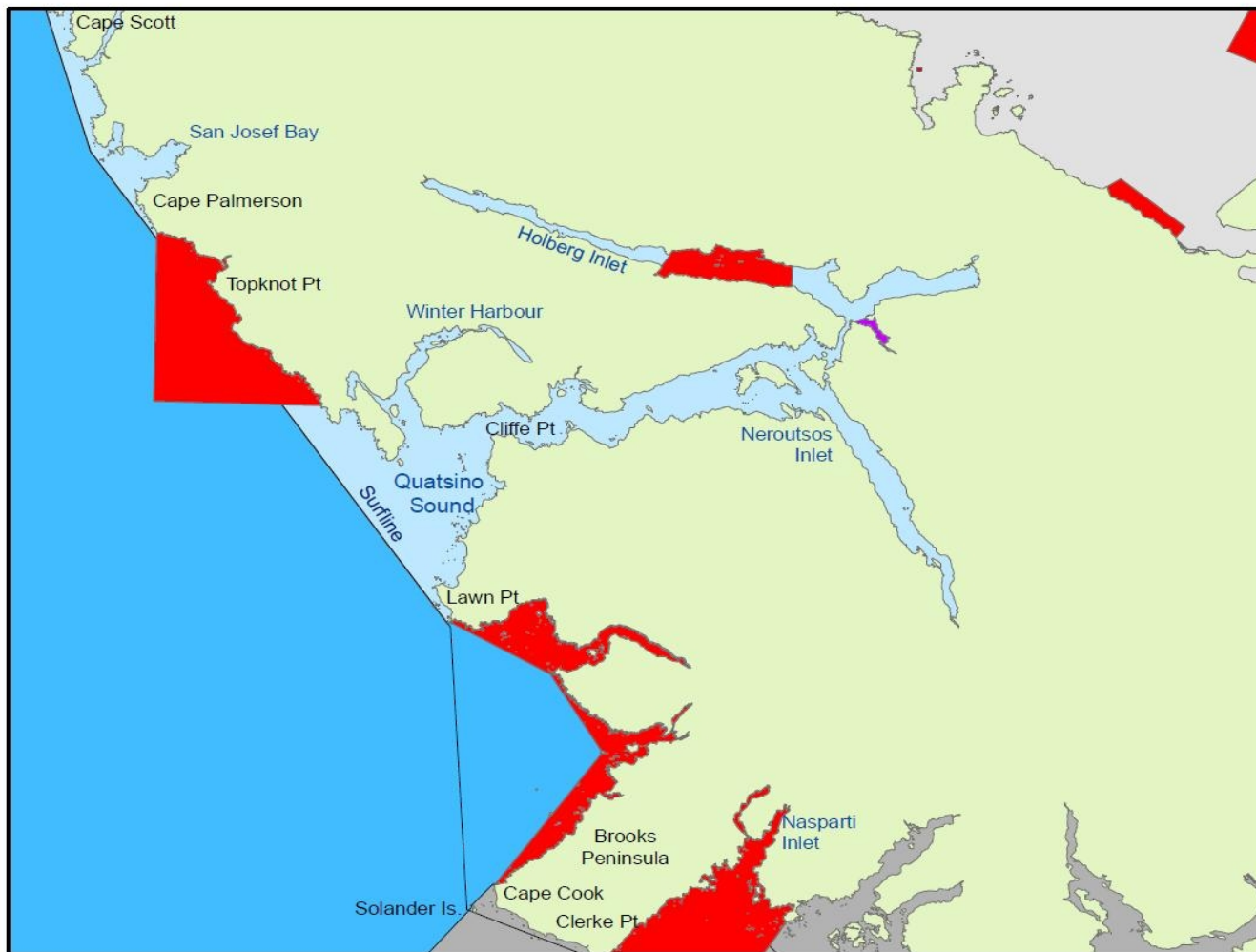




Area 27/127 Quatsino Sound 2011 COHO OPENINGS AND OTHER CLOSURES

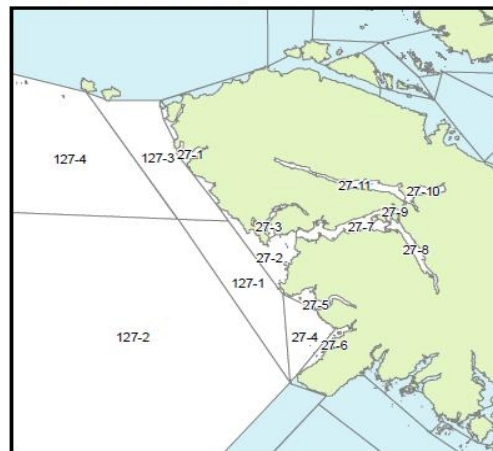


Area 27/127 General Info:

Jan 1 - May 31 Coho Non-Retention
 June 1 - Dec 31 Two (2) Coho per day, hatchery marked only
 (Unless otherwise specified)

	June 1 - Aug. 31	Two (2) coho per day, hatchery marked only
	June 1 - Aug. 31	Two (2) coho per day
	Sep. 1 - Dec. 31	Four (4) coho per day, hatchery marked only
	Sep. 1 - Dec. 31	Four (4) coho per day, only two (2) may be unmarked
	Jan. 1 - Dec. 31	Finfish Closure (Rockfish Conservation Areas)
	July 1 - Dec. 31	Finfish Closure
	Area 12	Refer to Area 12 Public Notices
	Area 26	Refer to Area 26 Public Notices

PFMA Overview Map



Visit the DFO Pacific Region Recreational Fishing website at www.pac.dfo-mpo.gc.ca/fm-gp/rec
 General Fishing Information Line 1-866-431-3474 (1-866-431-FISH)
 Local DFO Office 250-949-6422



Area 27 and 127			
Portion of Subarea 27-1 excluding the portion lying inside the Topknot RCA	Coho	Jun 1 – Aug 31	2 per day
Portion of Subarea 27-2 excluding the portion lying inside the Topknot RCA and Subarea 27-3		Sep 1 – Dec 31	4 per day, only 2 of which may be unmarked (wild)
Subareas 27-2 to 27-11 [Quatsino Sound east of the Cliffe Point Light, Holberg Inlet and Neurosis Inlet]			

FINFISH CLOSURES

In Area 27, the portion of Varney Bay from the Marble River tidal boundary downstream to the fishing boundary signs at the entrance of Varney Bay	July 01 – Dec 31
---	------------------

Refer to the following website link for a description of the Area and Subarea maps:

www.pac.dfo-mpo.gc.ca/fm-gp/maps-cartes/areas-secteurs/index-eng.htm

Sport anglers are encouraged to participate in the Salmon Head Recovery Program by labelling and submitting heads from adipose fin-clipped (hatchery marked) Chinook and Coho salmon. The location of the Head Recovery Depots can be found at:

www.pac.dfo-mpo.gc.ca/fm-gp/rec/tag-etiquette/prize-prix-eng.htm

CLOSURE TO FISHING FOR ALL FINFISH

Visit the DFO Pacific Region Recreational Fishing website at www.pac.dfo-mpo.gc.ca/fm-gp/rec
General Fishing Information Line 1-866-431-3474 (1-866-431-FISH)
Local DFO Office 250-949-6422



Sites designated as *Rockfish Conservation Areas* are closed to fishing for all finfish (including salmon)

For more information regarding Rockfish Conservation Areas go to the DFO website:

www.pac.dfo-mpo.gc.ca/fm-gp/rec/restricted-restreint/rca-acs-eng.htm

NOTES

The combined aggregate daily limit for Pacific Salmon is four (4) per day.

The possession limit is twice the daily limit.

When fishing for salmon, anglers are required to use barbless hooks.

DEFINITIONS

Hatchery marked or marked” means a fish that has a healed scar in place of the adipose, pelvic, or pectoral fin, or in place of a maxillary.

Don't Hesitate to Report Fishing Violations 1-800-465-4336