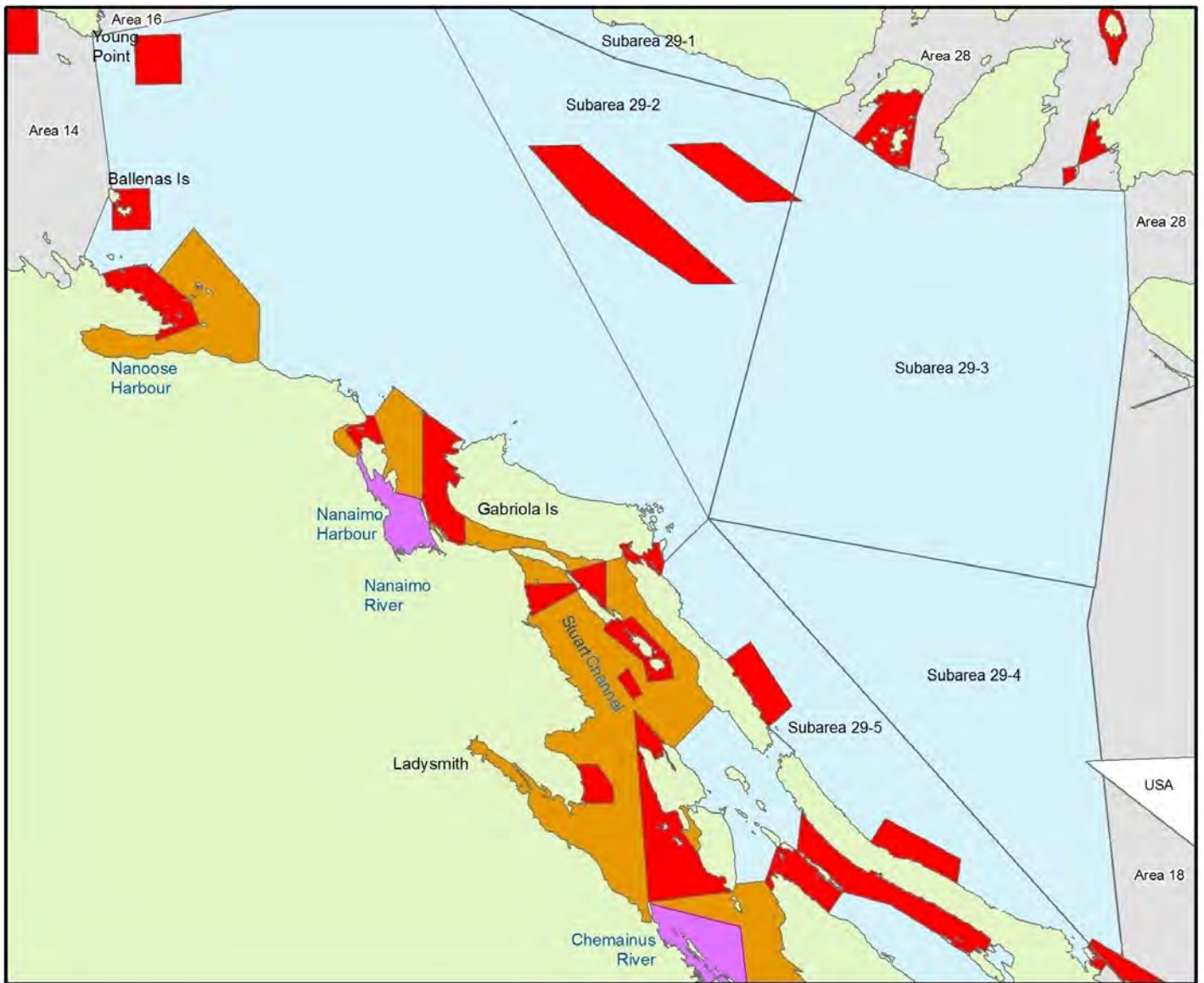




Area 17, and Subareas 29-1 to 29-5 2019 Chinook and Coho openings and other closures

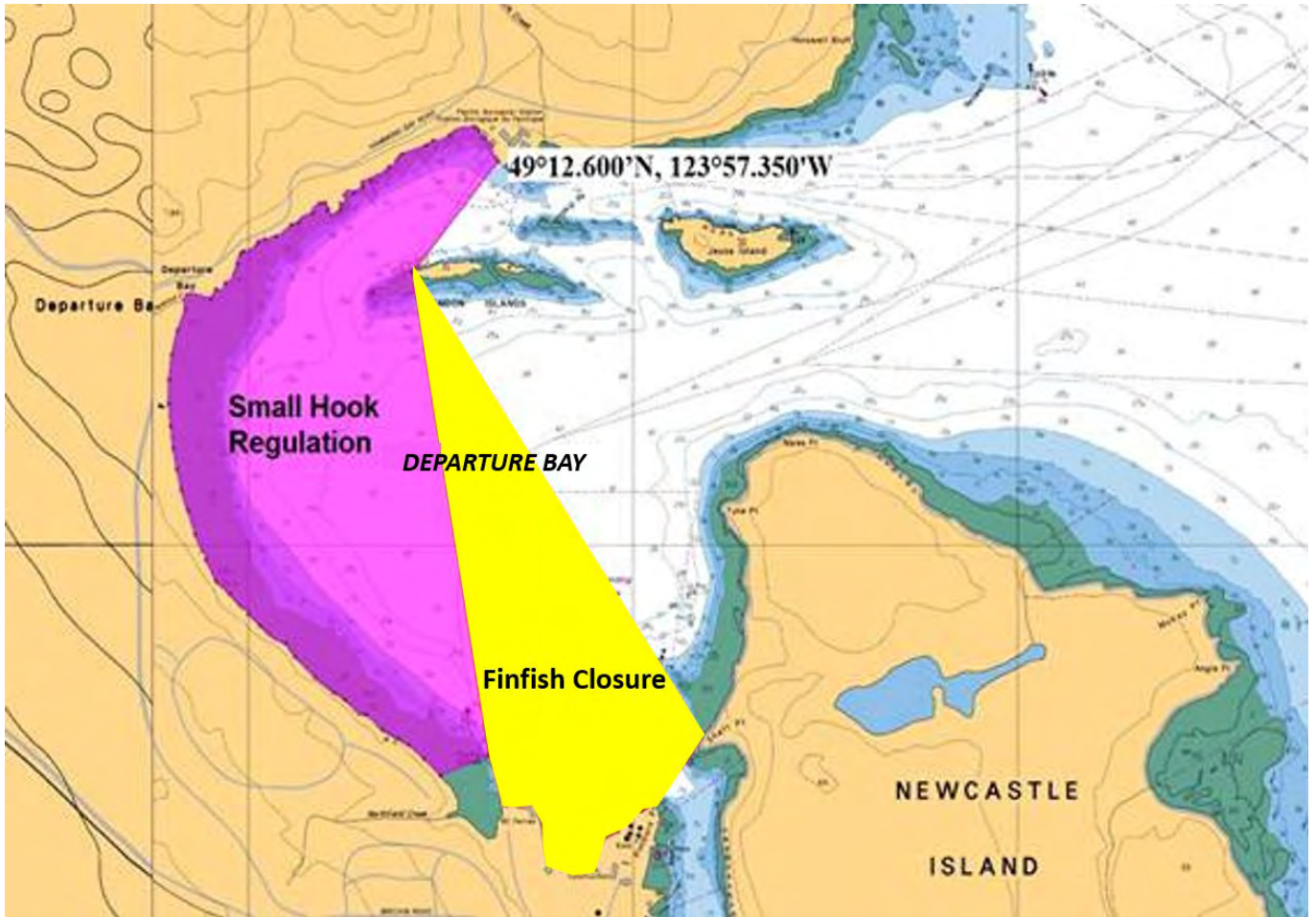


Area 17 and 29-1 to 29-5	
Date	Regulation
June 1 – Dec 31	2 Coho per day, hatchery marked only.
Apr 19 – Jul 14	Chinook non-retention
Jul 15 – Jul 31	1 Chinook per day, max size 80 cm
Aug 1 – Aug 29	1 Chinook per day
Aug 30 – Dec 31	2 Chinook per day
Jul 15 – Oct 31	Rolling Finfish closures and gear restrictions. See table for specific details
Aug 1 – Oct 15	Chinook non-retention
Apr 1 – Mar 31	Finfish closure – Rockfish Conservation Area (RCA)
Area 14, 16, 18, 28 and 29	Refer to Area 14,16,18, 28 and 29 Public Notices

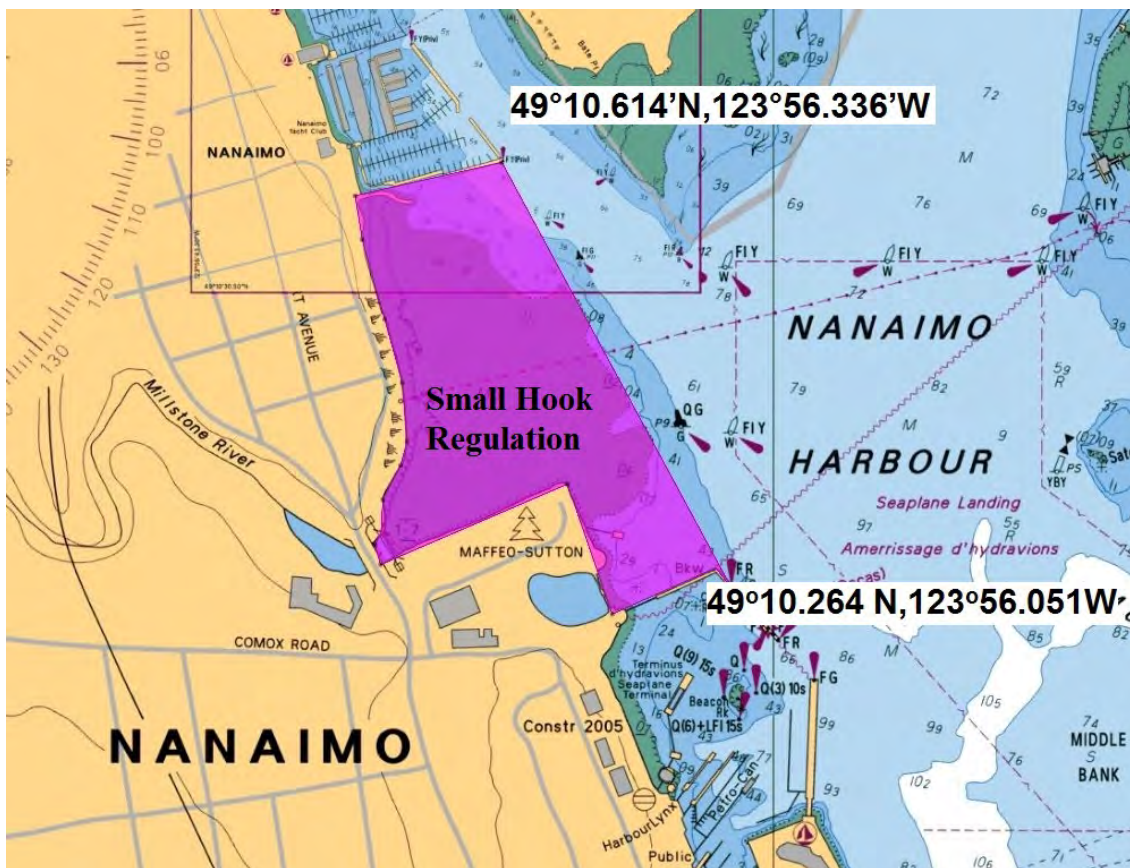




Area 17, and Subareas 29-1 to 29-5 2019 Chinook and Coho openings and other closures



Departure Bay



Nanaimo Harbour



Area 17, and Subareas 29-1 to 29-5 2019 Chinook and Coho openings and other closures

Date	Daily limit	Chinook and Coho length restriction and special management measures	Location
All year	2	2 Chinook per day, minimum size 62 cm	Area 17 and 29-1 to 29-5 unless stated different below:
June 1 to Dec 31	2	2 Coho per day, hatchery marked only	Area 17 and 29-1 to 29-5 unless stated different below:
Apr 19 – Jul 14	0	Chinook non-retention	Area 17 and 29-1 to 29-5 unless stated different below:
Jul 15 – Jul 31	1	1 Chinook per day, max size 80 cm	
Aug 1 – Aug 29	1	1 Chinook per day	
Aug 30 – Dec 31	2	2 Chinook per day	
Aug 1 – Oct 15	0	Chinook non-retention	In Subarea 17-4, except for those waters southeasterly of a line from Shingle Point to Pilkey Point Subareas 17-5 to 17-7 and 17-9. Then a portion of Subarea 17-12 inside a line from Tinson Point to Snake Island Light (RCA Boundary) to the southern Five Finger Island group to the RCA boundary starting Horswell Channel Buoy (49° 12.93'N, 123° 56.03'W) to north of Horswell Bluff (49° 12.93'N, 123° 56.47'W). Then in subarea 17-12, those waters inside a line from Icarus Point on Vancouver Island true north 2 nautical miles, then northwesterly to the Navy buoy in Ballenas Channel, then to Nankivell Point at the entrance to Schooner Cove on Vancouver Island. Subareas 17-13 to 17-17 [Northumberland Channel, Pylades Channel, Stuart Channel]. In Subareas 17-18 to 17-20
Jul 15 – Oct 15	Gear Restriction Pink Salmon	You may only use a single-pointed barbless hook that measures no more than 15 mm between the point and shank when fishing. Please see below for finfish closures	That portion of Departure Bay westerly of a line running from the following coordinates 49°12.600'N and 123°57.350'W near the Pacific Biological Station to the light on Brandon Island at 49°12.427'N and 123°57.571'W to the most westerly BC Ferry dock located at approximately 49°11.672'N and 123°57.372'W. That portion of Nanaimo Harbour shoreward of a line from the end of the most southerly dock located at the Nanaimo Yacht Club (49°10.614'N and 123°56.336'W) to the Pedestrian Fishing Pier (Crab Dock) located at Swy-a-lana Lagoon (49°10.264 N and 123°56.051W)

Date	Daily limit	Special Management Measures length restriction and special management measures	Location
Jul 15 – Oct 25	0	Finfish closure	A portion of Subarea 17-14 southerly from a line from Shaft Point on Newcastle Island to Pimbury Point on Vancouver Island and including a portion of Subarea 17-15 southwesterly of a line from Duke Point to Gallows Point on Protection Island
Jul 15 – Oct 31	0	Finfish closure	In Area 17, the tidal waters of the Chemainus River and off the Chemainus River mouth, inside a line commencing at Bare Point on Vancouver Island to the light on North Reef, to Sherard Point on Vancouver Island, thence following the shoreline northerly to a boundary sign on the Chemainus River near the Bald Eagle Campground, thence across the river to the opposite bank, thence following the Vancouver Island shoreline northerly to the beginning point.
Aug 4 – Oct 25	0	Finfish closure	That portion of Departure Bay (Subarea 17-13) inside a line from Shaft Point on Newcastle Island (49° 11.700'N and 123° 56.821'W) to Pimbury Point on Vancouver Island (49°11.597'N and 123° 56.941'W) then following the shoreline to the most westerly Ferry dock located at approximately 49° 11.672'N and 123° 57.372'W then to the light on Brandon Island (49° 12.427'N and 123° 57.571'W) then to the point of origin.
Oct 1 – Oct 25	0	Finfish closure	That portion of 17-14 in Nanaimo Harbour shoreward of a line from the end of the most southerly dock located at the Nanaimo Yacht Club (49°10.614'N and 123°56.336'W) to the Pedestrian Fishing Pier (Crab Dock) located at Swy-a-lana Lagoon (49°10.264 N and 123°56.051W).
Oct 25 – Nov 30	0	Finfish closure	In Area 17, that portion of the Nanaimo River from the Cedar Bridge to the white square boundary signs approximately 400 m downstream of the Cedar Bridge.
Apr 1 – Mar 31	0	Finfish closure – Rockfish Conservation Area (RCA)	http://www.pac.dfo-mpo.gc.ca/fm-gp/maps-cartes/rca-acis/index-eng.html