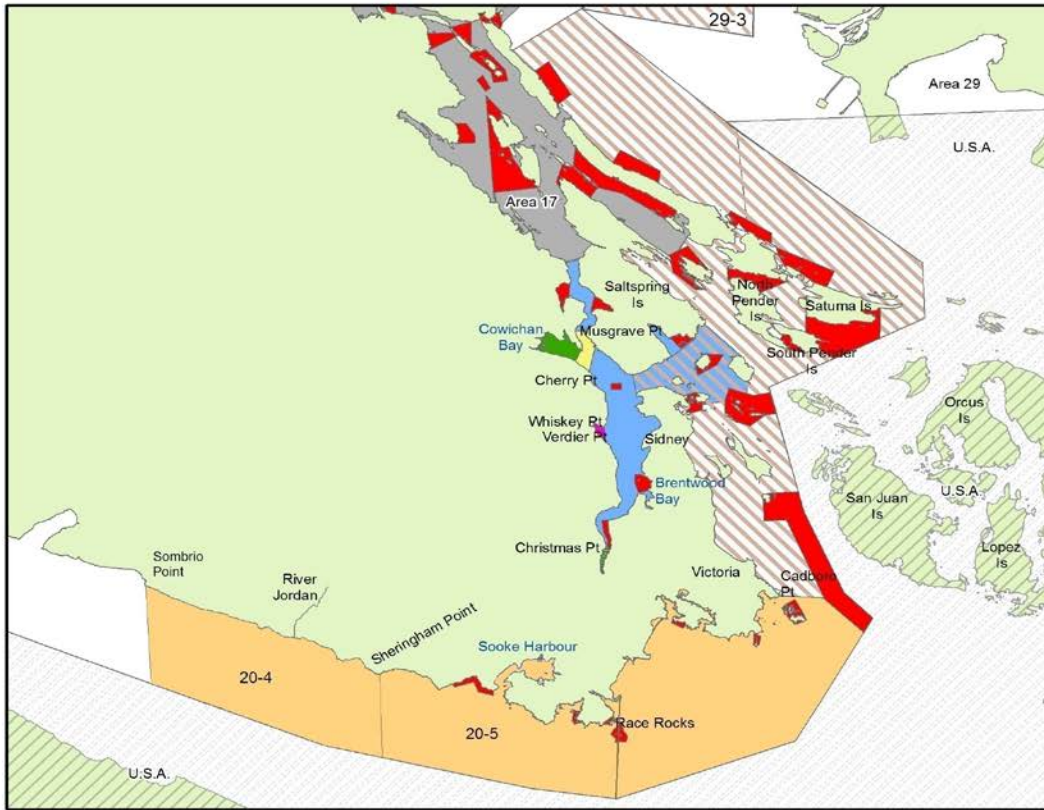
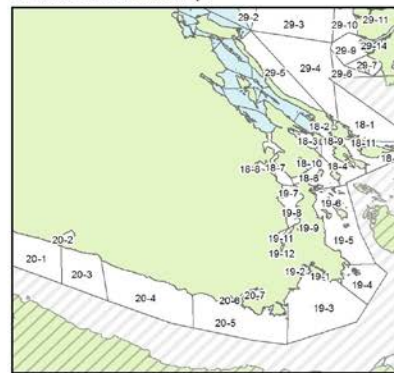



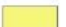


Areas 18, 19 and Subareas 20-5, 29-3 to 29-5 Cowichan to Victoria 2017 CHINOOK OPENINGS AND OTHER CLOSURES



PFMA Overview Map



-  Apr 1 - Mar 31 Finfish Closure (Rockfish Conservation Areas)
-  Aug 1 - Oct 31 Finfish Closure
-  Aug 1 - Oct 15 Finfish Closure
-  Aug 1 - Oct 15 Chinook Non-Retention
-  Sept 15 - Nov 30 Finfish Closure
-  March 1 - June 16 Two (2) chinook per day, wild or hatchery between 45-67 cm hatchery > 67 cm.
-  June 17 - July 14 Two (2) chinook per day wild or hatchery between 45-85 cm hatchery > 85 cm.
-  May 8 - June 16 Two (2) chinook per day, of which only (1) may be >67 cm. Minimum size limit is 62 cm.
-  June 17 - July 14 Two (2) chinook per day, wild or hatchery between 62-85 cm
-  Sept 1 - Nov 30 Finfish Closure

Visit the DFO Pacific Region Recreational Fishing website at www.pac.dfo-mpo.gc.ca/fm-gp/rec
General Fishing Information Line 1-866-431-3474 (1-866-431-FISH)
Local DFO Office 250-746-6221 (Duncan) or 250-363-3252 (Victoria)

Area 18			
Unless otherwise described below.	Chinook	Apr 1- Mar 31	2 per day, minimum size limit is 62 cm
Subareas 18-1 to 18-6, 18-9 and 18-11	Chinook	May 8 – June 16	Two (2) chinook per day, of which only one (1) may be > 67 cm.
		June 17- July 14	Two (2) chinook per day, wild or hatchery between 62-85 cm.
In Subareas 18-7 and 18-8, that portion of Subarea 18-7 that lies northerly of a line from a square white boundary sign on Vancouver Island, near 48°46.179'N and 123°34.654'W, to a square white boundary sign on Saltspring Island SE of Burial Islet, near 48°45.992'N and 123°33.777'W, and southerly of a line from a square white boundary sign on Saltspring Island approximately 1.5 nautical miles ESE of Musgrave Point, near 48°43.982'N and 123°31.418'W, to a square white boundary sign on Vancouver Island approximately 0.5 nautical miles NW of Cherry Point, near 48°43.197'N and 123°33.708'W.	Chinook	Aug 1-Oct 15	You may not retain Chinook.
In Subarea 18-10, the waters of Fulford Harbour inside or NW of a line between a fishing boundary sign located near the navigation light and Jackson Rock on the north shore of Fulford Harbour across the Harbour to a boundary sign on the opposite shore.	All	Oct 10-Jan 15	Only a single-pointed hook may be used.

Area 19			
Unless otherwise described below.	Chinook	Apr 1- Mar 31	2 per day, minimum size limit is 45 cm.
Subareas 19-1 to 19-4 [south of Cadboro Point]	Chinook	Mar 1 – Jun 16	Two (2) chinook per day, wild or hatchery between 45-67 cm, hatchery only > 67cm.

Visit the DFO Pacific Region Recreational Fishing website at www.pac.dfo-mpo.gc.ca/fm-gp/rec
 General Fishing Information Line 1-866-431-3474 (1-866-431-FISH)
 Local DFO Office 250-746-6221 (Duncan) or 250-363-3252 (Victoria)

Subareas 19-1 to 19-4 [south of Cadboro Point]	Chinook	June 17 – July 14	Two (2) chinook per day, wild or hatchery between 45-85 cm, hatchery only > 85 cm
Subareas 19-5 to 19-12 [north of Cadboro Point]	Chinook	Apr 1- Mar 31	2 per day, minimum size limit is 62 cm.
Subarea 19-5	Chinook	May 8 – June 16	Two (2) chinook per day, of which only one (1) may be > 67 cm.
		June 17 – July 14	Two (2) chinook per day, wild or hatchery between 62-85 cm.
In Subareas 19-7 to 19-12 [Saanich Inlet].	Salmon	Aug 1 – Oct 15	<i>You may not retain Chinook.</i>

Area 20 (Eastern Portion Only – see full Area 20 notice for additional information on Western portion, which includes subareas 20-1 to 20-4)			
Subareas 20-4 to 20-7	Chinook	Mar 1 – June 16	Two (2) chinook per day, wild or hatchery between 45-67 cm, hatchery only > 67cm.
	Chinook	June 17 – July 14	Two (2) chinook per day, wild or hatchery between 45-85 cm, hatchery only > 85 cm.
Subareas 20-6 and 20-7 [Sooke Inlet, Sooke Harbour and Sooke Basin, northerly of a line from Muir Point to Possession Point]	Chinook	Aug 1 - Oct 15	<i>You may not retain Chinook.</i>

Areas 29-3 to 29-5 ***NEW REGULATION IN EFFECT***			
those portions of Subareas 29-3 to 29-5 that lie southeasterly of a line from a point on the east side of Valdes Island located at 49 degrees 05.562'N and 123 degrees 39.989'W then extending approximately 57 degrees True to the North Arm Jetty Light located at 49 degrees 15.440'N and 123 degrees 16.778'W	Chinook	May 8 – June 16	Two (2) chinook per day, of which only one (1) may be > 67 cm.
		June 17- July 14	Two (2) chinook per day, wild or hatchery between 62-85 cm.

Visit the DFO Pacific Region Recreational Fishing website at www.pac.dfo-mpo.gc.ca/fm-gp/rec
 General Fishing Information Line 1-866-431-3474 (1-866-431-FISH)
 Local DFO Office 250-746-6221 (Duncan) or 250-363-3252 (Victoria)

FINFISH CLOSURES

Area 18	
In Area 18, the waters of Cowichan Bay inside a line from a fishing boundary sign near Separation Point on Vancouver Island to Wilcuma Wharf. (Green on Map)	Aug 1-Oct 31
In Subareas 18-7 and 18-8, that portion of Subarea 18-8 that lies easterly of a line from a square white boundary sign at Separation Point to a square white boundary sign at Wilcuma Wharf in Cowichan Bay; and that portion of Subarea 18-7 that lies southerly of a line from a square white boundary sign on Vancouver Island, near 48°46.179'N and 123°34.654'W, to a square white boundary sign on Saltspring Island SE of Burial Islet, near 48°45.992'N and 123°33.777'W, and northerly of a line from a square white boundary sign on Saltspring Island approximately 1.5 nautical miles ESE of Musgrave Point, near 48°43.982'N and 123°31.418'W, to a square white boundary sign on Vancouver Island approximately 0.5 nautical miles NW of Cherry Point, near 48°43.197'N and 123°33.708'W. (Yellow on Map)	Aug 1-Oct 15
Area 19	
In Area 19, the waters of Saanich Inlet inside a line from Whiskey Point to Verdier Point.	Sep 15-Nov 30
Subarea 19-12. [Saanich Inlet, south of Christmas Point]	Sep 1-Nov 30

Refer to the following website link for a description of the Area and Subarea maps:

www.pac.dfo-mpo.gc.ca/fm-gp/maps-cartes/areas-secteurs/index-eng.htm

CLOSURE TO FISHING FOR ALL FINFISH

Sites designated as *Rockfish Conservation Areas* are closed to fishing for all finfish (including salmon).

For more information regarding Rockfish Conservation Areas go to the DFO website:

Visit the DFO Pacific Region Recreational Fishing website at www.pac.dfo-mpo.gc.ca/fm-gp/rec
 General Fishing Information Line 1-866-431-3474 (1-866-431-FISH)
 Local DFO Office 250-746-6221 (Duncan) or 250-363-3252 (Victoria)

www.pac.dfo-mpo.gc.ca/fm-gp/rec/restricted-restraint/rca-ac-s-eng.htm

NOTES

The combined aggregate daily limit for Pacific Salmon is four (4) per day.

The possession limit is twice the daily limit.

When fishing for salmon, anglers are required to use barbless hooks.

DEFINITIONS

“**Hatchery marked or marked**” means a fish that has a healed scar in place of the adipose, pelvic, or pectoral fin, or in place of a maxillary.

Don't Hesitate to Report Fishing Violations 1-800-465-4336

Visit the DFO Pacific Region Recreational Fishing website at www.pac.dfo-mpo.gc.ca/fm-gp/rec
General Fishing Information Line 1-866-431-3474 (1-866-431-FISH)
Local DFO Office 250-746-6221 (Duncan) or 250-363-3252 (Victoria)