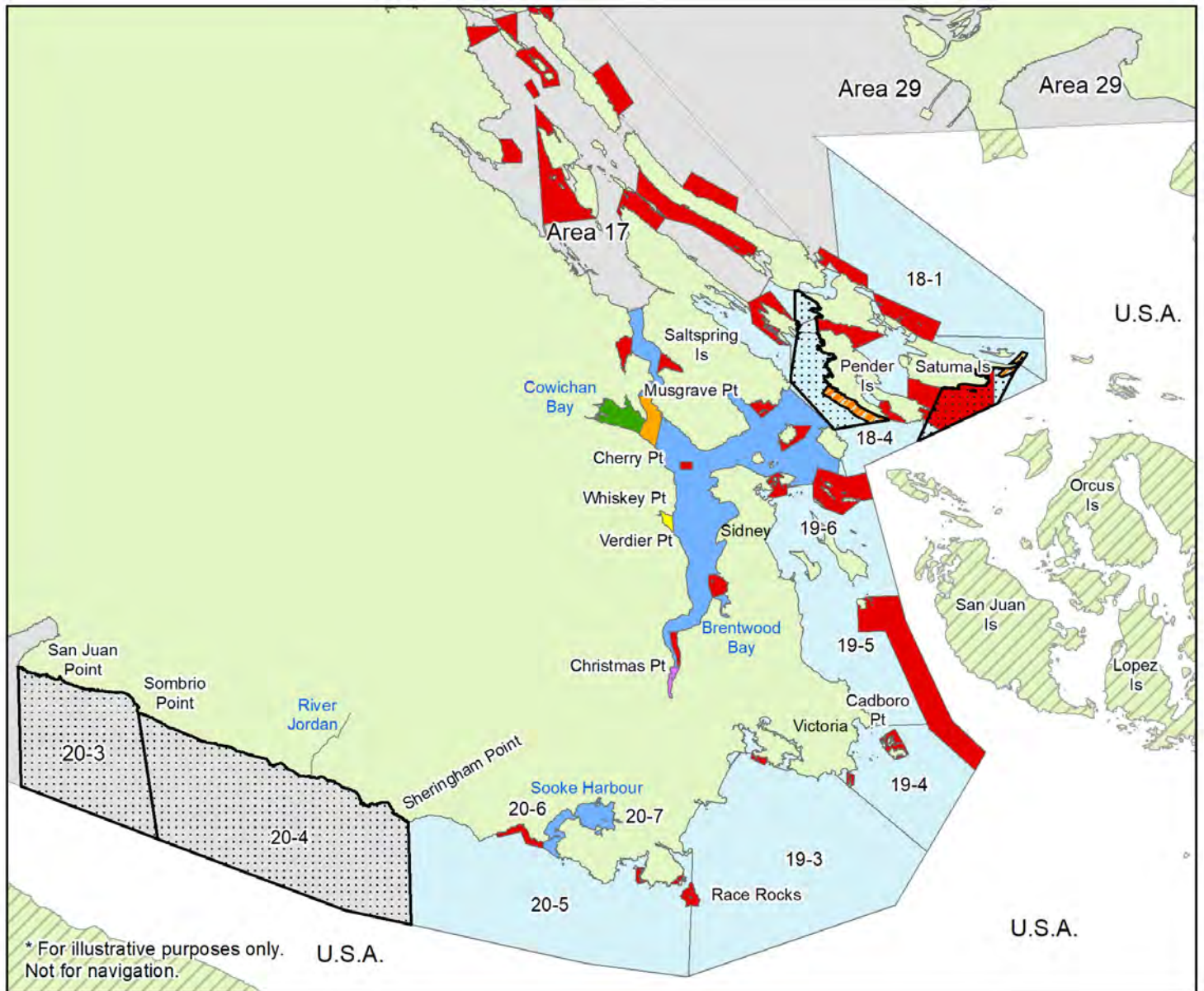




Areas 18, 19, and 20-3 to 20-7 Cowichan to Victoria 2019 Chinook openings and other closures



Areas 18, 19 and 20-3 to 20-7		
	Date	Regulation
	Apr 19 – Jul 31	Chinook non-retention
	Aug 1 – Aug 29	1 Chinook per day
	Aug 30 – Dec 31	2 Chinook per day
	Apr 19 – Jul 31	Chinook non-retention
	Aug 1 – Oct 31	Closed to salmon fishing
	Jun 1 – Oct 31	Southern Resident Killer Whale Interim Sanctuary Zone – general vessel traffic prohibited and Finfish closure
	Aug 1 – Oct 15	Chinook non-retention
	Aug 1 – Oct 31	Finfish closure
	Sep 15 – Nov 30	Finfish closure
	Sep 1 – Nov 30	Finfish closure
	Aug 1 – Oct 15	Finfish closure
	Apr 1 – Mar 31	Finfish closure – Rockfish Conservation Area (RCA)
	Area 17, 20, 29	Refer to Area 17, 20 and 29 Public Notices





Areas 18, 19, and 20-3 to 20-7 Cowichan to Victoria 2019 Chinook openings and other closures

Date	Daily limit	Chinook length restriction and special management measures	Location
All year	2	2 Chinook per day, minimum size 62 cm	Areas 18, 19-5 to 19-12, unless specified differently below:
All year	2	2 Chinook per day, minimum size 45 cm	Subareas 19-1 to 19-4, and 20-3 to 20-7 unless specified differently below:
Apr 19 – Jul 31	0	Chinook non-retention	Areas 18, 19, and 20-3 to 20-7, unless specified differently below:
Aug 1 – Aug 29	1	1 Chinook per day	
Aug 30 – Dec 31	2	2 Chinook per day	
Aug 1-Oct 15	0	Chinook non-retention	<p>Subareas 18-6</p> <p>that portion of Subarea 18-7 that lies northerly of a line from a square white boundary sign on Vancouver Island, near 48°46.179'N and 123°34.654'W, to a square white boundary sign on Saltspring Island SE of Burial Islet, near 48°45.992'N and 123°33.777'W, and southerly of a line from a square white boundary sign on Saltspring Island approximately 1.5 nautical miles ESE of Musgrave Point, near 48°43.982'N and 123°31.418'W, to a square white boundary sign on Vancouver Island approximately 0.5 nautical miles NW of Cherry Point, near 48°43.197'N and 123°33.708'W</p> <p>that portion of Subarea 18-8 that lies easterly of a line from a square white boundary sign at Wilcuma Wharf in Cowichan Bay.</p> <p>Subarea 18-10</p> <p>Subareas 19-7 to 19-12 (Saanich Inlet)</p> <p>Subareas 20-6 and 20-7 [Sooke Inlet, Sooke Harbour and Sooke Basin, northerly of a line from Muir Point to Possession Point].</p>
Aug 1-Oct 31	0	Closed to salmon fishing	<p>Pender Island: Subarea 18-9 and those portions of Subareas 18-2 and 18-4 inside a line drawn from a point located along Wallace Point on North Pender Island at 48°44.173' north latitude and 123°13.956' west longitude southwesterly across Swanson Channel to a point located northern extremity of Parkin Point on Moresby Island located at 48°43.885' north latitude and 123°18.666' west longitude, thence northwesterly to the northeastern extremity of Beaver point on Saltspring Island at 48°46.518' north latitude and 123°21.997' west longitude, thence northeasterly to a point along the eastern shoreline of Prevost Island at 48°49.258' north latitude and 123°21.265' west longitude, thence northerly and westerly along the shoreline to a point north of Portlock Point located at 48°49.944' north latitude and 123°21.468' west longitude, thence northerly across Trincomali Channel to Collinson Point on Galiano Island at 48°51.583' north latitude and 123°21.128' west longitude, thence across Active Pass to Helen Point on Mayne Island at 48°51.449' north latitude and 123°20.719' west longitude, thence southerly along the shoreline to the western extremity of Dinner Point at 48°49.983' north latitude and 123°19.663' west longitude, thence southerly across to Stanley Point on North Pender Island located at 48°49.199' north latitude and 123°19.544' west longitude, and thence southerly and easterly along the shoreline of North Pender Island back to the point of commencement.</p> <p>Saturna Island: The portions of Subareas 18-4 and 18-5 inside a line drawn from Murder Point on Saturna Island located at 48°45.811' north latitude and 123°09.318' west longitude easterly and northerly along the shoreline to a point south of East Point at 48°46.867' north latitude and 123°02.915' west longitude, thence southwesterly to a point in water at 48°46.634' north latitude and 123°03.117' west longitude, thence southwesterly to a point in water intersecting with the international boundary with the United of America at 48°44.866' north latitude and 123°04.638' west longitude, thence southwesterly along the international boundary with the United States of America to a point in water located at 48°42.928' north latitude and 123°11.505' west longitude, thence northeasterly in a straight line back to the point of commencement.</p>



Areas 18, 19, and 20-3 to 20-7 Cowichan to Victoria 2019 Chinook openings and other closures

Date	Daily limit	Chinook length restriction and special management measures	Location
Aug 1 – Oct 31	0	Closed to salmon fishing	Subareas 20-3 and 20-4
Aug 1 – Oct 31	0	Finfish closure	In Area 18, the waters of Cowichan Bay inside a line from a fishing boundary sign near Separation Point on Vancouver Island to Wilcuma Wharf.
Aug 1 – Oct 15	0	Finfish closure	That portion of Subarea 18-7 that lies southerly of a line from a square white boundary sign on Vancouver Island, near 48°46.179'N and 123°34.654'W, to a square white boundary sign on Saltspring Island SE of Burial Islet, near 48°45.992'N and 123°33.777'W, and northerly of a line from a square white boundary sign on Saltspring Island approximately 1.5 nautical miles ESE of Musgrave Point, near 48°43.982'N and 123°31.418'W, to a square white boundary sign on Vancouver Island approximately 0.5 nautical miles NW of Cherry Point, near 48°43.197'N and 123°33.708'W. That portion of Subarea 18-8 that lies easterly of a line from a square white boundary sign at Separation Point to a square white boundary sign at Wilcuma Wharf in Cowichan Bay
Sep 15 – Nov 30	0	Finfish closure	In Area 19, the waters of Saanich Inlet inside a line from Whiskey Point to Verdier Point.
Sep 1 – Nov 30	0	Finfish closure	Subarea 19-12. [Saanich Inlet, south of Christmas Point]
Jun 1 – Oct 31	0	Finfish closure and vessel prohibition	Saturna Island -Those portions of Subareas 18-5 and 18-11 off Saturna Island inside a line commencing on the shoreline of Saturna Island at 48°47.033'N and 123°03.550'W [NorthBoundary of East Point (shoreline)] northeasterly to a point in water at 48°47.300'N and 123°03.000'W [Tumbo Channel], thence northeasterly to a point in water at 48°47.666'N and 123°02.416'W [Northwest Corner(Boiling Reef)], thence southeasterly to a point in water at 48°47.550'N and 123°02.000'W [Northeast Corner(Boiling Reef)], thence southwesterly to a point in water at 48°46.933'N and 123°02.666'W [Boundary Pass], thence southwesterly to a point in water at 48°46.600'N and 123°03.166'W [Narvaez Bay Boundary Following the Traffic Separation Scheme(TSS)], thence southwesterly to a point in water at 48°46.450'N and 123°03.650'W [Narvaez Bay Boundary Following the TSS], thence southwesterly to a point in water at 48°46.300'N and 123°04.200'W [Southeast Corner (Narvaez Bay)], thence northwesterly to a point in water at 48°46.416'N and 123°04.533'W [Southwest Corner (Narvaez Bay)], thence northeasterly to a point along the shoreline of Saturna Island at 48°46.766'N and 123°03.916'W [South Boundary of East Point(shoreline)], and thence following the eastern shoreline back to the point of commencement. [Saturna Island Interim Sanctuary Zone] Pender Island -That portion of Subarea 18-4 west of Pender Island inside a line commencing at a point in water at 48°44.166'N and 123°13.900'W [Southeast Boundary (Wallace Point)] due east to a point in water located at 48°44.166'N and 123°15.550'W [Southwest Boundary (Swanson Channel)], thence northwesterly to a point in water at 48°46.050'N and 123°19.516'W [Northwest Boundary (Swanson Channel)], thence due east to point in water at 48°46.050'N 123°18.383'W [Northeast Boundary(South of Thieves)].
Oct 10-Jan 15	Gear restriction	You may only use a single-pointed barbless hook.	In Subarea 18-10, the waters of Fulford Harbour inside or northwest of a line between a fishing boundary sign located near the navigation light and Jackson Rock on the northern shore of Fulford Harbour across Fulford Harbour to a boundary sign on the opposite shore.
Apr 1 – Mar 31	0	Finfish closure – Rockfish Conservation Area (RCA)	http://www.pac.dfo-mpo.gc.ca/fm-gp/maps-cartes/rca-acs/index-eng.html