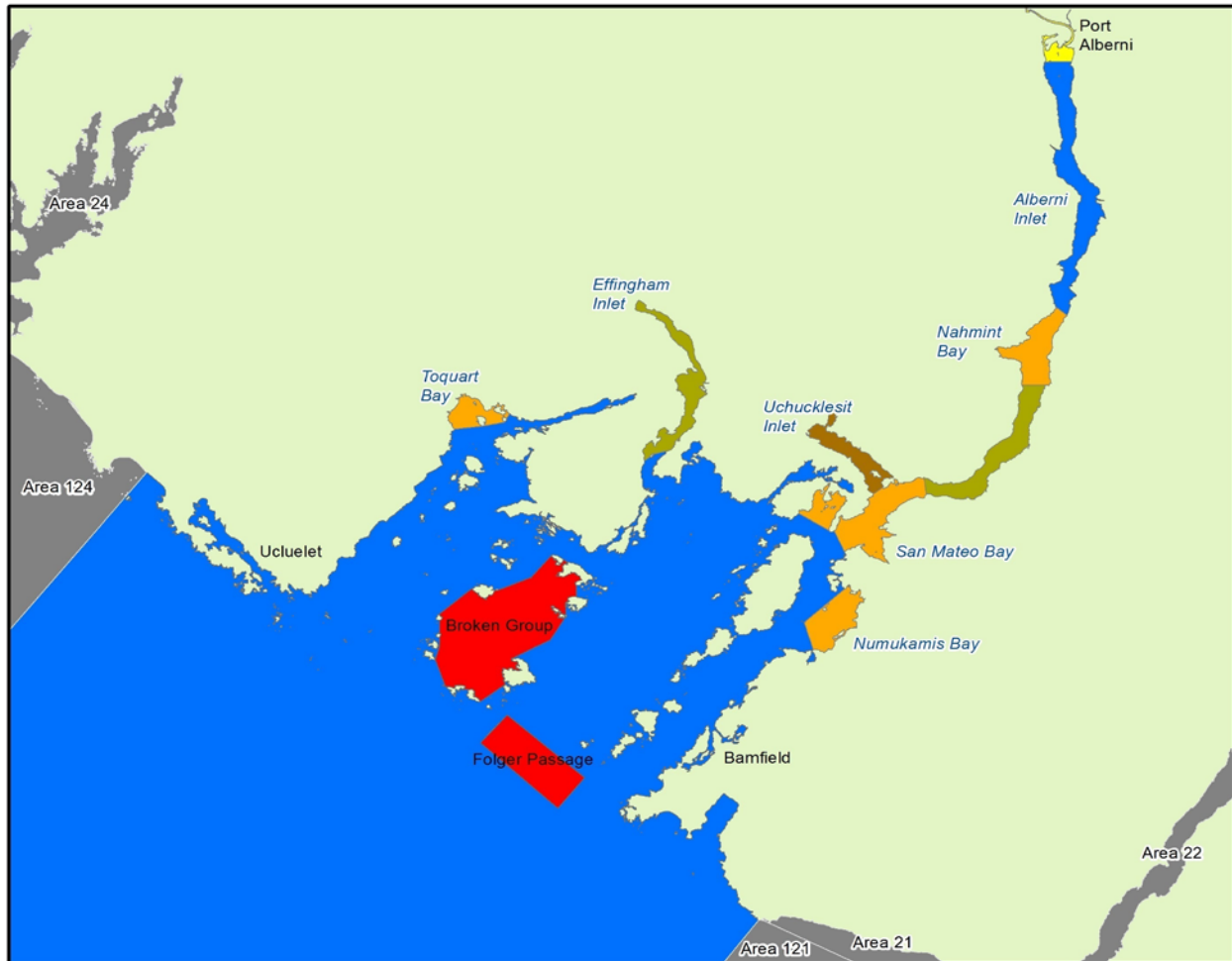












# Areas 23/123 Barkley Sound and Alberni Inlet 2017 CHINOOK OPENINGS AND OTHER CLOSURES

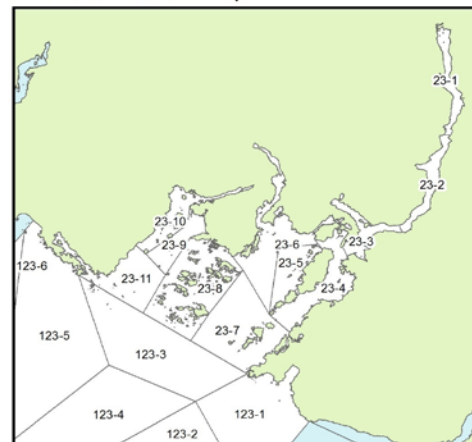


### Area 23/123 General Info:

Two (2) Chinook per day, minimum size 45cm  
(Unless otherwise specified)

	Jan 1 - Dec 31	Two (2) Chinook per day, minimum size 45cm
	Jun 30 - Oct 31	Finfish Closure
	Aug 1 - Sep 30	Finfish Closure
	Aug 1 - Sep 30	Chinook Non-Retention Area
	May 1 - Sep 30	Finfish Closure
	When open	Hook Restriction: Only a single barbless hook may be used
	All Year	Finfish Closure (Rockfish Conservation Areas)
	Area 21/121, 22, 24/124	Refer to Area 21/121/ 22/24/124 Public Notices

### PFMA Overview Map



visit the Pacific Region Recreational Fishing website at [www.pac.dfo-mpo.gc.ca/mrpfcc](http://www.pac.dfo-mpo.gc.ca/mrpfcc)

General Fishing Information Line 1-866-431-3474 (1-866-431-FISH)

Local DFO Office 250-725-3500

Date	Daily Limit	<b>CHINOOK</b> Length Restriction and Special Management Measures	Location
Jan 1 – Dec 31	<b>2</b>	Two (2) chinook per day	Areas 23 and 123 with the exception of the closures described below:
Aug 1 – Sep 30	<b>0</b>	Finfish Closure	<b>Numukamis Bay</b> - that portion of sub-area 23-4 inside a line from a boundary sign on the eastern shore near the entrance to Poett Nook harbour to San Jose Islets light then to a boundary sign on Vancouver Island 0.3 nm east of the southern tip of Congreve Island.
Aug 1 – Sep 30	<b>0</b>	Finfish Closure	<b>Rainy Bay</b> - that portion of 23-4 northeast of a line between a boundary sign at Chup Point and a boundary sign on Seddall Island excluding the channel draining Fatty Basin.
Aug 1 – Sep 30	<b>0</b>	Finfish Closure	<b>San Mateo Bay</b> - that portion of 23-3 north east of a line between a boundary sign at Mutine Point and the Chup Point light to a line drawn between Star Point and a boundary sign near the mouth of Handy Creek.
Aug 1 – Sep 30	<b>0</b>	Finfish Closure	<b>Nahmint Bay</b> - that portion of 23-2 north of a line between a boundary sign near Chesnucknuw Creek west to a boundary sign on the opposite shore and southwest of a line drawn from Hocking Point 127° true to a boundary sign on the opposite shore.
Aug 1 – Sep 30	<b>0</b>	Finfish Closure	<b>Toquart Bay</b> - that portion of 23-10 shoreward of a line beginning at a point on the Vancouver Island shoreline located at 49°01.170'N, 125°21.497'W then to the southern tip of Snowden Island then across to the southern tip of Refuge Island then ending at a point on the Vancouver Island shoreline located at 49°01.691'N, 125°18.624'W.
Jun 30 – Oct 31	<b>0</b>	Finfish Closure	<b>Uchucklesit Inlet</b> - that portion of 23-3 northwest of a line between boundary signs at Brooksby Point and Burrough Point.
Aug 1 – Sep 30	<b>0</b>	Chinook Non-Retention Area	<b>Approach waters to Nahmint</b> - that portion of 23-3 from a line between Star Point and a boundary sign near the mouth of Handy Creek, to a line drawn between a boundary sign near Chesnucknuw Creek to a boundary sign on the opposite shore.
Aug 1 – Sep 30	<b>0</b>	Chinook Non-Retention Area	<b>Effingham Inlet</b> - that portion of 23-6 shoreward of from a line beginning at a point on the Vancouver Island shoreline at 48°59.963'N, 125°11.526'W across to the western tip of Webster Island, continuing along the shoreline to the northeastern tip of Webster Island then across to a point on the Vancouver Island shoreline located at 49°00.295'N, 125°10.445'W.
May 1 – Sep 30	<b>0</b>	Finfish Closure	That portion of 23-1 (Port Alberni harbour boundary and lower Somass River) from a line drawn from the boundary sign at 49°14.19N and 124°50.23 to the southern tip of Hoik Island then to the flashing green light designating the river channel then to a boundary sign on the opposite shore upstream to boundary signs located above the rapids at Paper Mill Dam.
When Open:		Only single barbless hooks are allowed all year	
Jan 1 – Dec 31	<b>0</b>	Rockfish Conservation Areas (RCAs)* closed to fishing for finfish. Indicated in red on the accompanying map.	<ul style="list-style-type: none"> <li>● Broken Group RCA</li> <li>● Folger Passage RCA</li> </ul>

**ROCKFISH CONSERVATION AREAS - CLOSED TO FISHING FOR ALL FINFISH**  
**Sites designated as *Rockfish Conservation Areas* are closed to fishing for all finfish (including salmon). For more information regarding Rockfish Conservation Areas go to the DFO website:**

[www.pac.dfo-mpo.gc.ca/fm-gp/rec/restricted-restreint/rca-acs-eng.htm](http://www.pac.dfo-mpo.gc.ca/fm-gp/rec/restricted-restreint/rca-acs-eng.htm)

Visit the DFO Pacific Region Recreational Fishing website at [www.pac.dfo-mpo.gc.ca/fm-gp/rec](http://www.pac.dfo-mpo.gc.ca/fm-gp/rec)  
 General Fishing Information Line 1-866-431-3474 (1-866-431-FISH)  
 Local DFO Office 250-725-3500