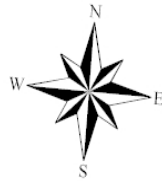







# Conservation and Protection BC North Coast – 2011 Post Season Salmon Report

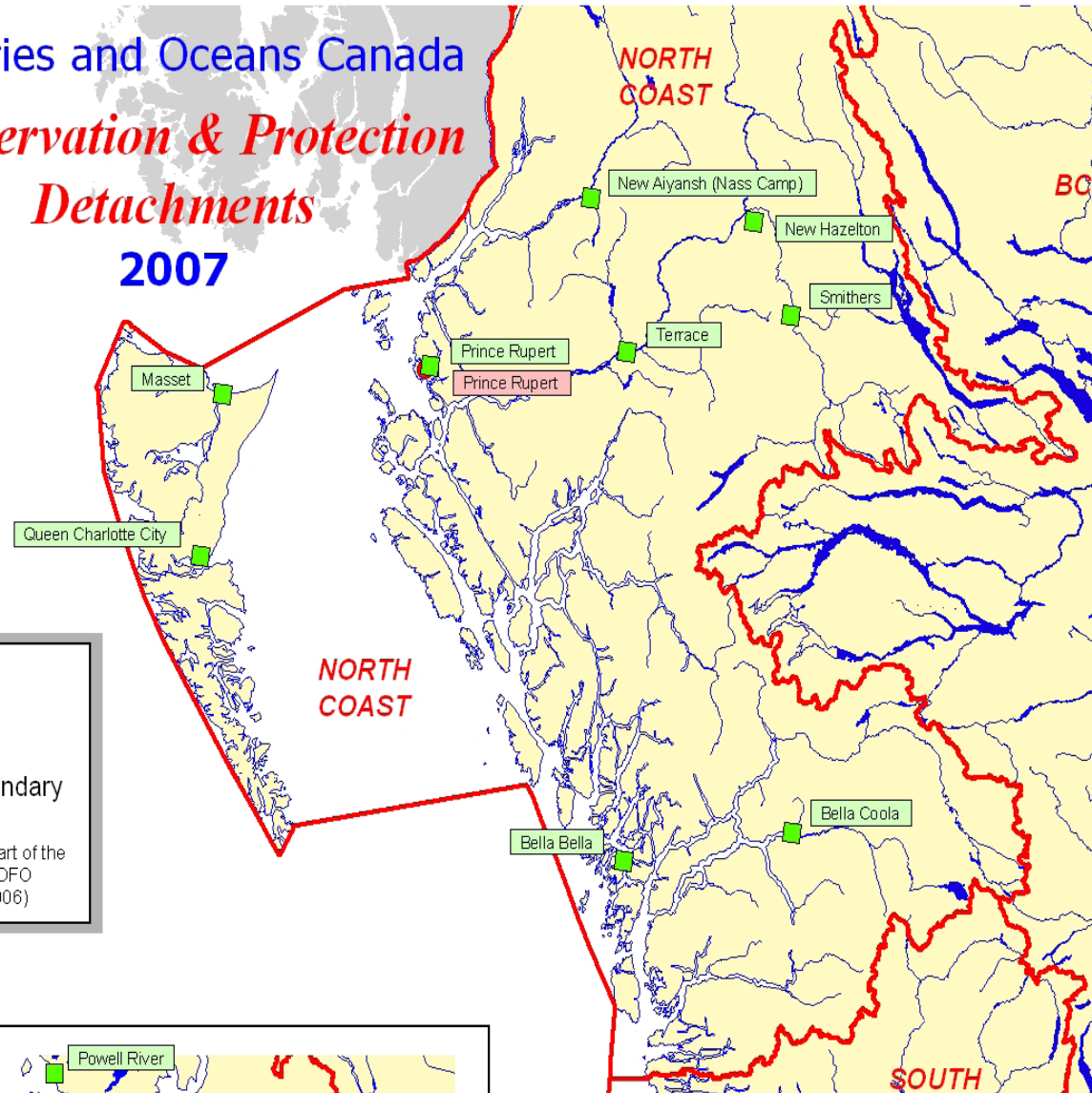


## Fisheries and Oceans Canada *Conservation & Protection* *Detachments* 2007



-  C&P Detachments
-  Area Office / RHQ
-  DFO Operational Boundary

Data Source: BC Basemap (Digital Chart of the World), DFO Sites (CCG, April 2006), DFO Operational Boundary (CCG, March 2006)





# Staffing North Coast C&P

**BC North Coast C&P Is Comprised of 5 Detachments**

**1) Haida Gwaii  
C&P Detachment Supervisor – Doug Cowen  
Phone: 250-559-4413**

**2) Prince Rupert  
C&P Detachment Supervisor – Scott Keehn  
Phone: 250-627-3430**

**3) Terrace/Kitimat/New Aiyansh  
C&P Detachment Supervisor – Andy Lewis  
Phone: 250-615-5361**

**4) Smithers/Hazelton  
C&P Detachment Supervisor – Ricardo Correia  
Phone: 250-847-2576**

**5) Bella Coola/Bella Bella  
C&P Detachment Supervisor – Bob Tupniak  
Phone: 250-799-5698**

**Denis Burnip Area Chief NC C&P  
Terrace DFO office  
Ph# 250-615-5362  
Email: [denis.burnip@dfo-mpo.gc.ca](mailto:denis.burnip@dfo-mpo.gc.ca)**



## **Staffing Update**

### **Fraser River Deployments;**

**NC C&P was asked to contribute Officers for 3 week blocks from June to mid Sept. This was a triage process set up by Denis Burnip that identified Officers to assist but only go if called upon. Two Officers went from Bella Coola Detachment this year.**

**North Coast was not fully staffed this year. Vacancies include one in Prince Rupert, and one in Masset. Staffing processes are on hold. There may be the possibility of recruiting in 2012.**



- **A pre-season planning process uses an integrated risk management matrix that rationalizes National, Regional and Area priorities with key operational issues. This provides for a more strategic and accountable use of limited resources.**
- **C&P works closely with other DFO sectors and staff, with industry, First Nations communities, recreational groups and others to develop these plans. This helps C&P define how to best address compliance and enforcement issues, establish and build on open lines of communication, provide education, and to foster community involvement.**
- **In season adjustments are made as necessary to focus C&P effort on high profile compliance and enforcement issues.**



The C&P program is delivered through a balanced regulatory management and enforcement approach known as the 3 Pillars. These are:

- 1) promotion of compliance through education and shared stewardship;
- 2) monitoring, control and surveillance activities; and,
- 3) management of major cases /special investigations in relation to complex compliance issues.





# **Education, Stewardship, Partnering**

## **(Pillar 1)**

**Staff in the North Coast continue to develop and deliver a number of activities related to Restorative Justice Programs, Enforcement Protocols, education/stewardship and joint patrols within the Communities in the North Coast.**

**Pillar one events and activities include Sea Fest, Oceans Day (Bella Coola), Kinkolith Crab Fest, Fry Releases, Egg Takes, Career Days, FN celebrations, summer camps, parades, and school presentations.**

**This year again, our staff helped to organize and participate in the Gathering Strength Canoe Journey, with our First Nations Communities. C&P now has a canoe of it's own, and will form part of the 2012 journey.**



# Gathering Strength Journey 2011 from Kinkolith to Hartley Bay.





## Pillar 2

### Monitoring, Control and Surveillance

- **NC C&P staff participate in a wide variety of Compliance and Enforcement activities directed at commercial, recreational and First Nations fisheries as well as closed time/area patrols, and habitat enforcement.**





# Compliance Discussion

- **C&P compiles statistics on various activities including checks, violations, gear, etc.**
- **The number of violations can be cross referenced with number of checks to get a compliance rate.**
- **Officers often cannot get a large enough representative “sample size” of checks to allow compliance rates to be applied confidently.**
- **Compliance issues can involve small groups within a fishery or a geographical area.**
- **When Officers encounter violations at the beginning of a patrol it can remove them from the fishery for hours or even days depending on the significance of the violation and possible disposition of seizures. This often limits the amount of checks that can be done in any given fishery.**
- **“Trends” are more reflective of compliance than strictly a percentage.**



## Commercial Salmon Net Fisheries

It was a busy season in Areas 3-10 this year. Compliance was problematic compared to other years. Compliance with conditions of license, specifically the release of prohibited species was a priority. Illegal laundering of non-commercially caught salmon into the net fishery was also an identified enforcement issue again this year.





## N/C Salmon Troll

**Area F Salmon Troll – over 100 vessels – June to September. Compliance issues included illegal gear, over quota, fishing in closed areas, and failure of license conditions. Officers attended off loads and identified a lack of compliance in the head retention condition.**





## Recreational Fisheries

The North Coast Area has numerous sport fish lodges, and charter vessel operators. C&P Officers visit most Lodges providing educational and information packages on a yearly basis.

Compliance was fair to good. Violations for exceeding quota, illegal gear, failure to record, and licensing violations were encountered.





## Recreational Fisheries

**Non tidal fisheries were effected by high water this year. Typically this fishery is very popular and Officers spend considerable effort monitoring compliance.**





## Recreational Fisheries

The Babine Lake sockeye fishery saw growth again this season due to good escapement. An estimated 130 vessels fishing were encountered on any given day in late August. Compliance in this fisheries was good. Violations encountered included fishing closed areas, snagging and over possession.





## First Nation Fisheries

Officers patrol the FSC fisheries, as well as the Inland Economic fisheries and ESSR. Officers have been working to improve cooperation and increase joint patrol activities. Sales of FSC is an identified issue.





## Pillar 2 Enforcement

Officers can do “hot spot” style enforcement operations directed at a location or a specific group. Enforcement activities ranged from multi-agency road blocks to long range surveillance.





# Pillar 3

**Management of major cases /special investigations in relation to complex compliance issues. Habitat investigations are usually complex in nature.**

**Officers develop and implement detailed plans to deal with systemic and well established illegal activities. These plans may utilize Regional resources that may include deployment of Officers from other areas of the Region.**

**These activities can take considerable amounts of time and resources, but can result in multiple charges and substantial penalties.**



# The End.

- **North Coast C&P has compiled a detailed Post Season Compliance and Enforcement Statistical Summary that is included in the full summary. If you have specific questions regarding a Detachment report please contact the associated Detachment Supervisor.**
  
- **Questions?**