

# Central Coast Catch and Escapement



Stat Areas 7-10

# Central Coast – Areas 7 to 10

- Overview of the 2011 Food, Social, and Ceremonial Catches
- Overview & Details of 2011 Sport Catches
- Overview & Details of 2011 Commercial Net Catches
- 2011 Escapement Highlights

# Very Preliminary Food, Social and Ceremonial Catches in 2011

	<b>Sockeye</b>	<b>Coho</b>	<b>Pink</b>	<b>Chum</b>	<b>Chinook</b>
<b>Area 7 – Tidal</b>	2,128	84	227	265	69
<b>Area 8 - Tidal</b>	12	2	6	12	0
<b>Area 8 - Non-Tidal</b>	41	Pending	16	128	2,199
<b>Area 9 - Non-Tidal</b>	898	1	118	4	55
<b>Area 10 - Tidal</b>	2,100	3	1	0	0
<b>TOTAL</b>	<b>5,179</b>	<b>90</b>	<b>368</b>	<b>399</b>	<b>2,323</b>

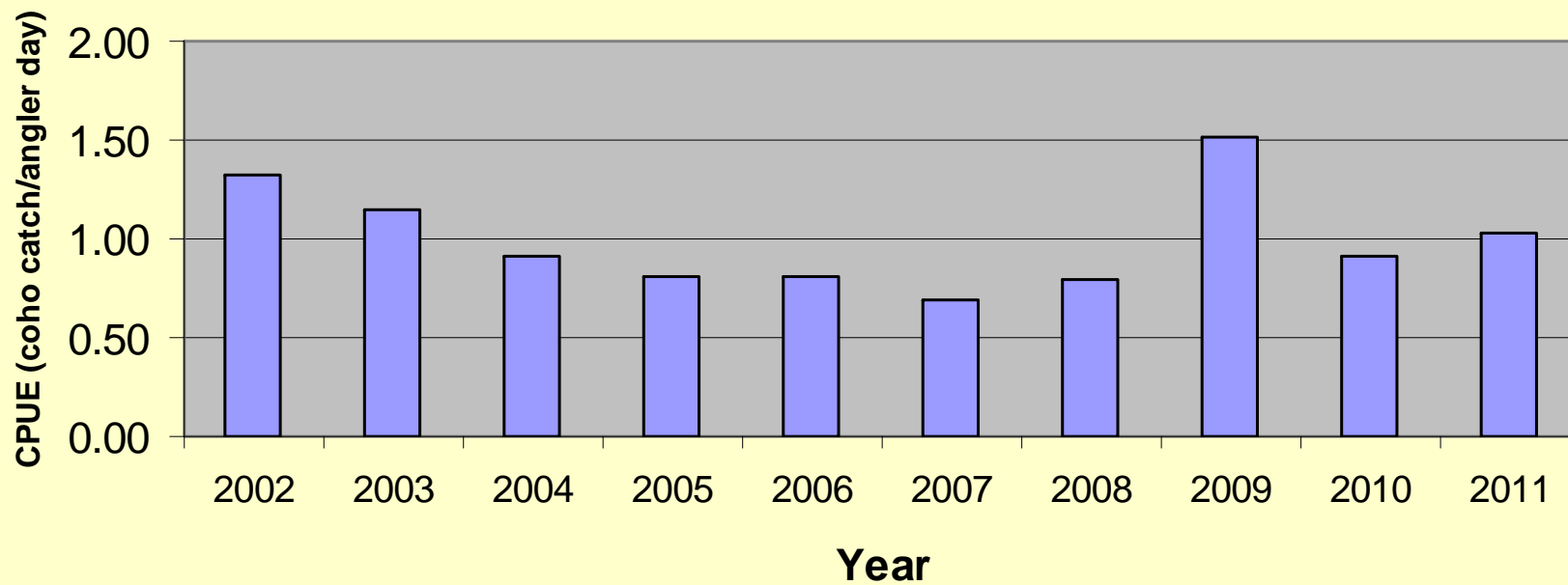
# Sport Salmon Catches in 2011

Known Lodge and Charter Operator Catch Info	Coho	Pink	Chum	Chinook
Area 7	4,886	137	29	2,321
Area 8 Hakai Pass	3,949	949	40	962
Area 8 - Non-Tidal	unk	unk	unk	unk
Area 9	7,369	677	80	1,942
Area 10	124	3	0	271
<b>TOTAL</b>	<b>16,328</b>	<b>1,766</b>	<b>149</b>	<b>5,496</b>

# Area 7

Year	Effort	Ck	Ck CPUE	Coho	Coho CPUE
2006	10,883	5,652	0.52	8,839	0.81
2007	10,911	4,031	0.37	7,566	0.69
2008	8,255	1,906	0.23	6,434	0.78
2009	4,656	1,727	0.37	7,020	1.51
2010	4,651	1,532	0.33	4,261	0.92
<b>2011</b>	<b>4,763</b>	<b>2,321</b>	<b>0.49</b>	<b>4,886</b>	<b>1.03</b>

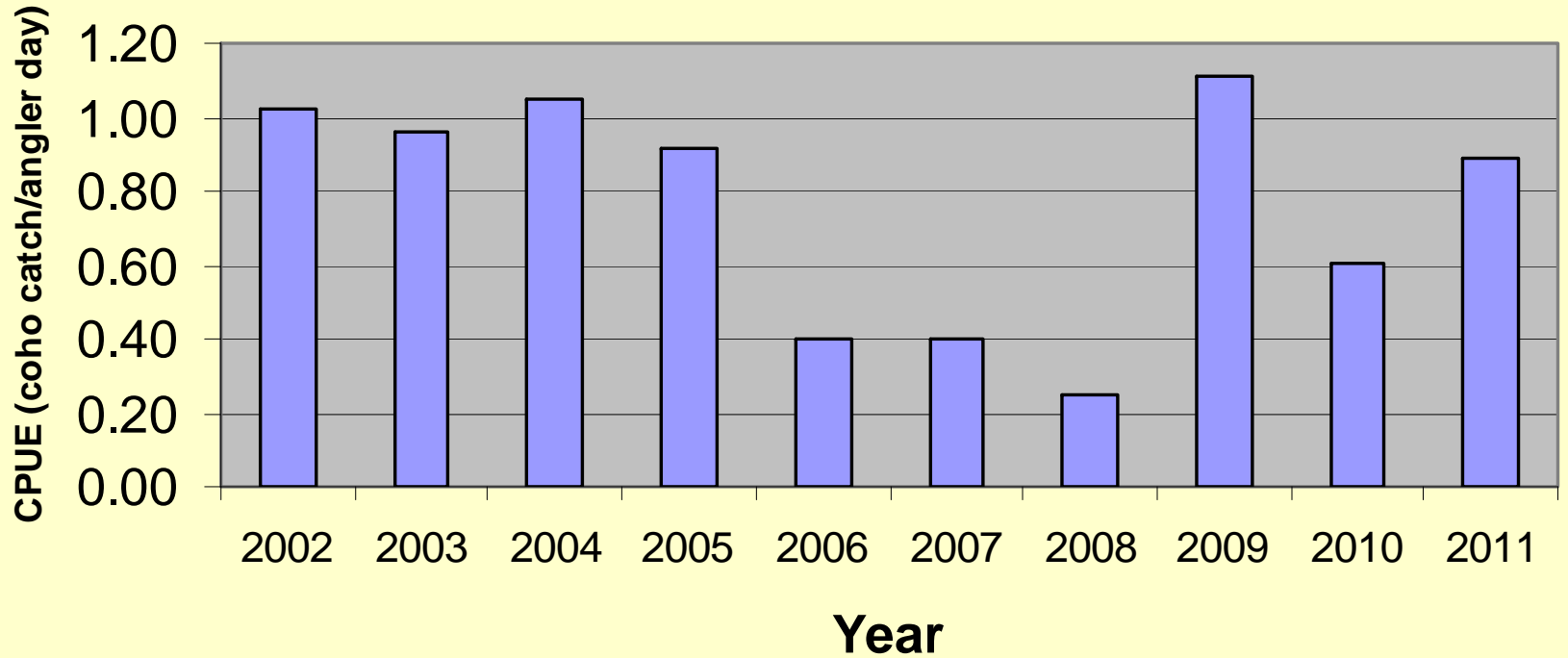
## Area 7 Coho CPUE by Year



# Area 8 (Hakai Pass) - Tidal

Year	Effort	Ck	Ck CPUE	Coho	Coho CPUE
2006	6,488	2,049	0.32	2,578	0.40
2007	6,660	809	0.12	2,673	0.40
2008	5,493	454	0.08	1,360	0.25
2009	4,628	509	0.11	5,140	1.11
2010	4,347	648	0.15	2,616	0.60
<b>2011</b>	<b>4,443</b>	<b>962</b>	<b>0.22</b>	<b>3,949</b>	<b>0.89</b>

# Hakai Pass Coho CPUE by Year



# Area 8 – Non-Tidal Sport

Bella Coola/Atnarko 2011

## Chinook

- survey started again this year but no estimate of catch generated from the data so far
- most recent surveys suggest effort levels in the 1,000 to 1,500 rod day range and catch in the 500 to 1,000 piece range
- last effects from the 2010 flood did slow fishery particularly at the start of the fishery

## Coho

- fishing success was fairly good although another flood this time on Sept 23<sup>rd</sup> impacted the fishery significantly

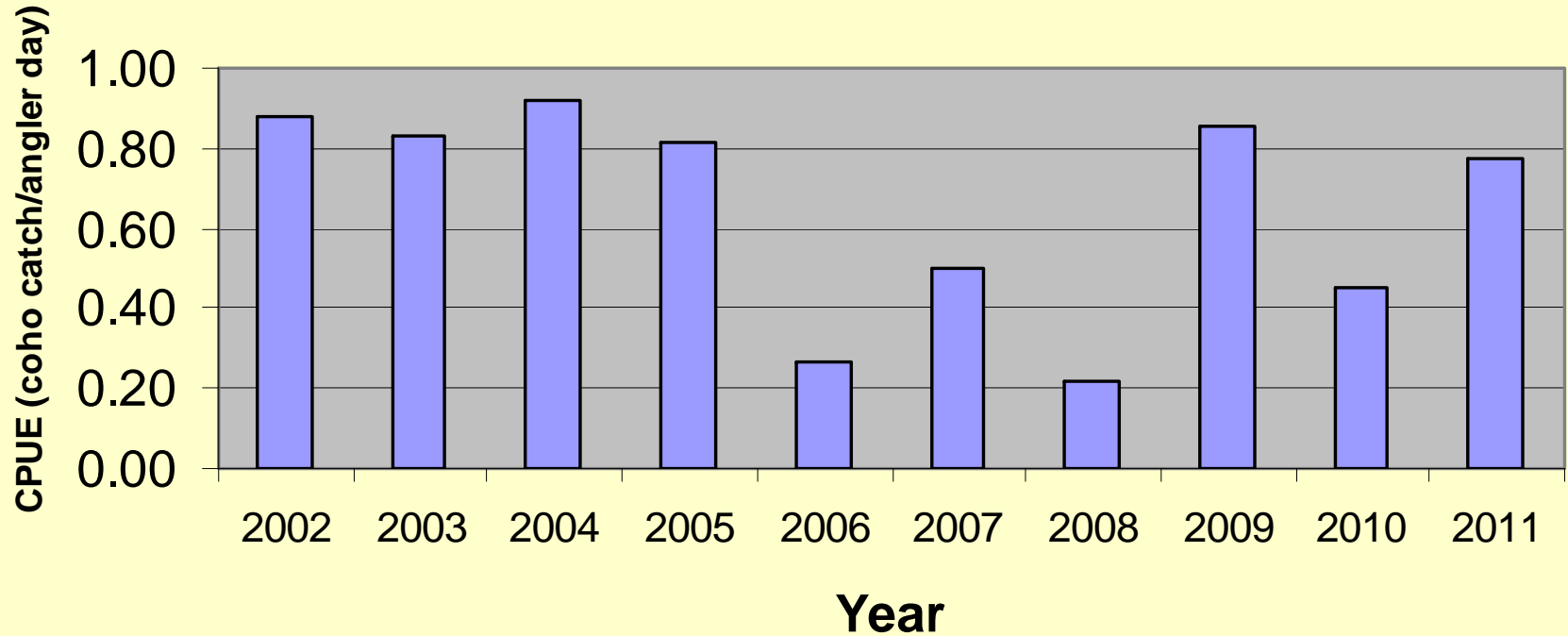
## Chum

- Limit reduced to 0 August 3<sup>rd</sup>

# Area 9

Year	Effort	Ck	Ck CPUE	Coho	Coho CPUE
2006	18,119	1,681	0.09	4,876	0.27
2007	15,645	1,290	0.08	7,771	0.50
2008	13,028	549	0.04	2,854	0.22
2009	10,618	1,003	0.09	9,106	0.86
2010	10,174	1,863	0.18	4,577	0.45
<b>2011</b>	<b>9,479</b>	<b>1,942</b>	<b>0.20</b>	<b>7,369</b>	<b>0.77</b>

## Rivers Inlet Coho CPUE by Year



# Commercial Catch in 2011

	<b>Sockeye</b>	<b>Coho</b>	<b>Pink</b>	<b>Chum</b>	<b>Chinook</b>
<b>Area 7</b>	6	2,707	9,375	306,599	0
<b>Area 8</b>	475	671	3,411	33,326	5,052
<b>Area 9</b>	0	0	0	0	0
<b>Area 10</b>	43,388	494	0	0	0
<b>TOTAL</b>	<b>43,869</b>	<b>3,872</b>	<b>12,786</b>	<b>339,925</b>	<b>5,052</b>

# Area 7 Catch

**Finlayson - Sept 1 to 27**  
**Chum 16,170**

**Sheep Pass - Sept 1**  
**Chum 9,839**

**Area 7 Gillnet - Total Catch**  
**chum - 83,615**  
**pink - 1,437**  
**coho - 1,669**

**Mathieson - Sept 2**  
**Chum 13,699**

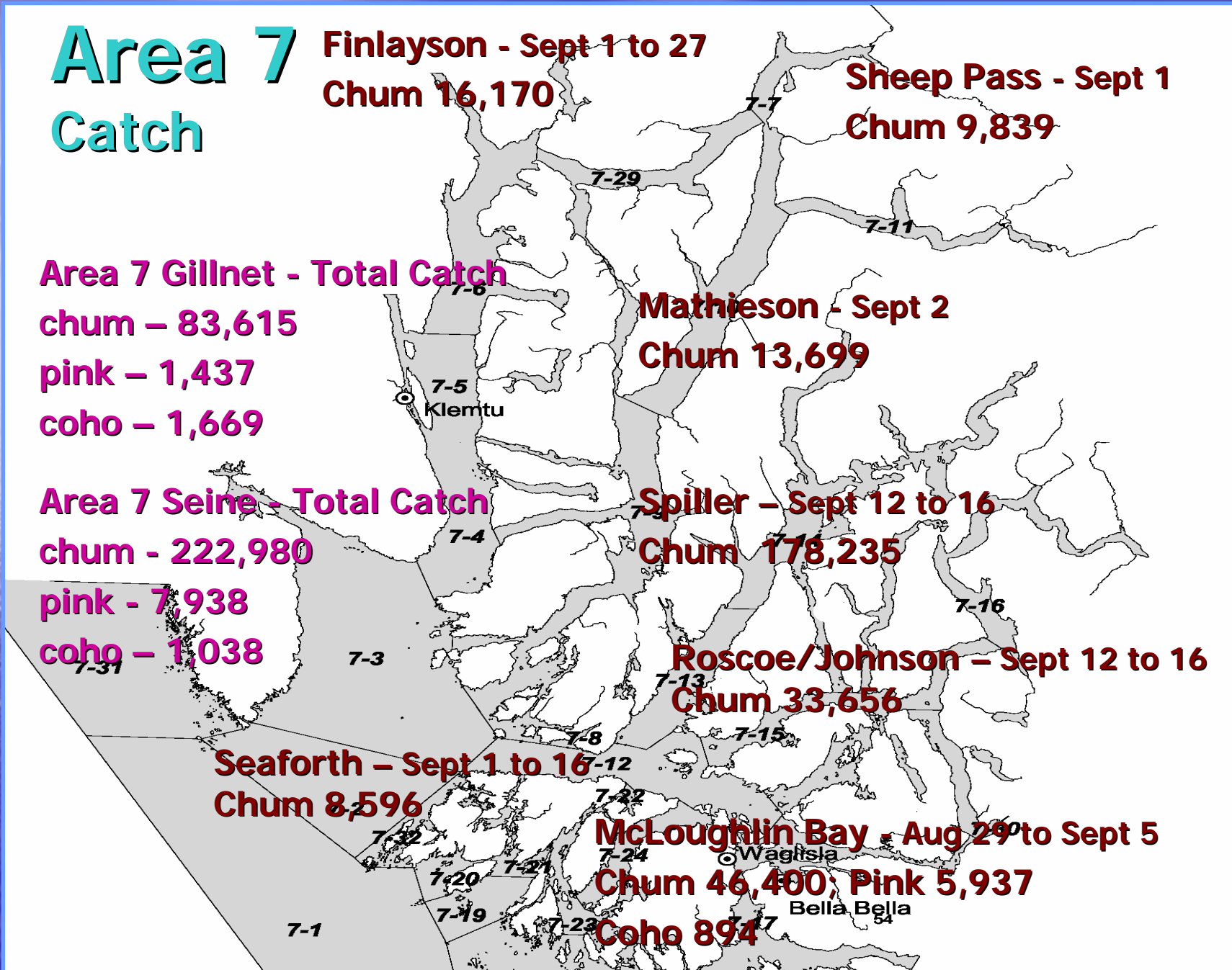
**Area 7 Seine - Total Catch**  
**chum - 222,980**  
**pink - 7,938**  
**coho - 1,038**

**Spiller - Sept 12 to 16**  
**Chum 178,235**

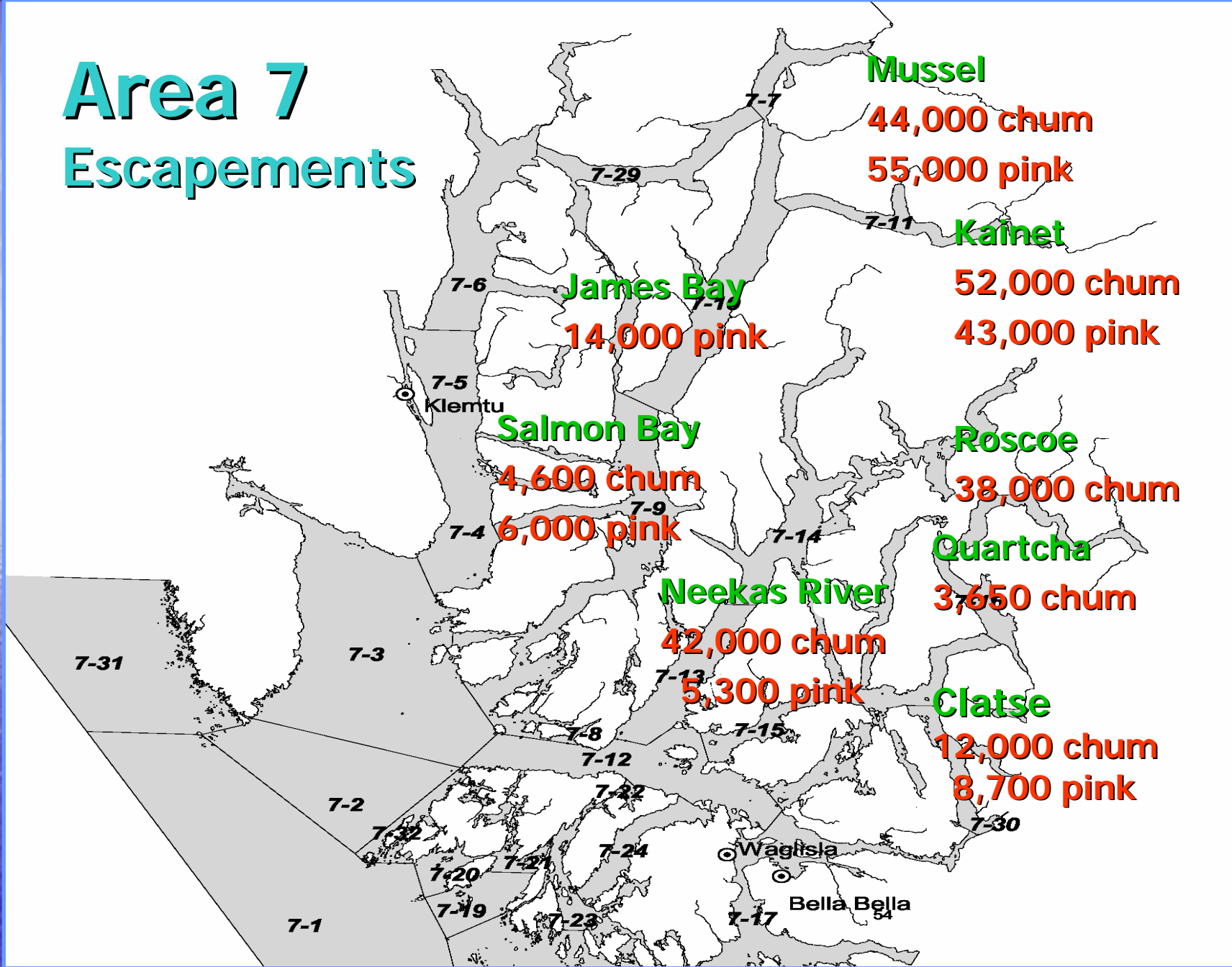
**Roscoe/Johnson - Sept 12 to 16**  
**Chum 33,656**

**Seaforth - Sept 1 to 16**  
**Chum 8,596**

**McLoughlin Bay - Aug 29 to Sept 5**  
**Chum 46,400; Pink 5,937**  
**Coho 894**

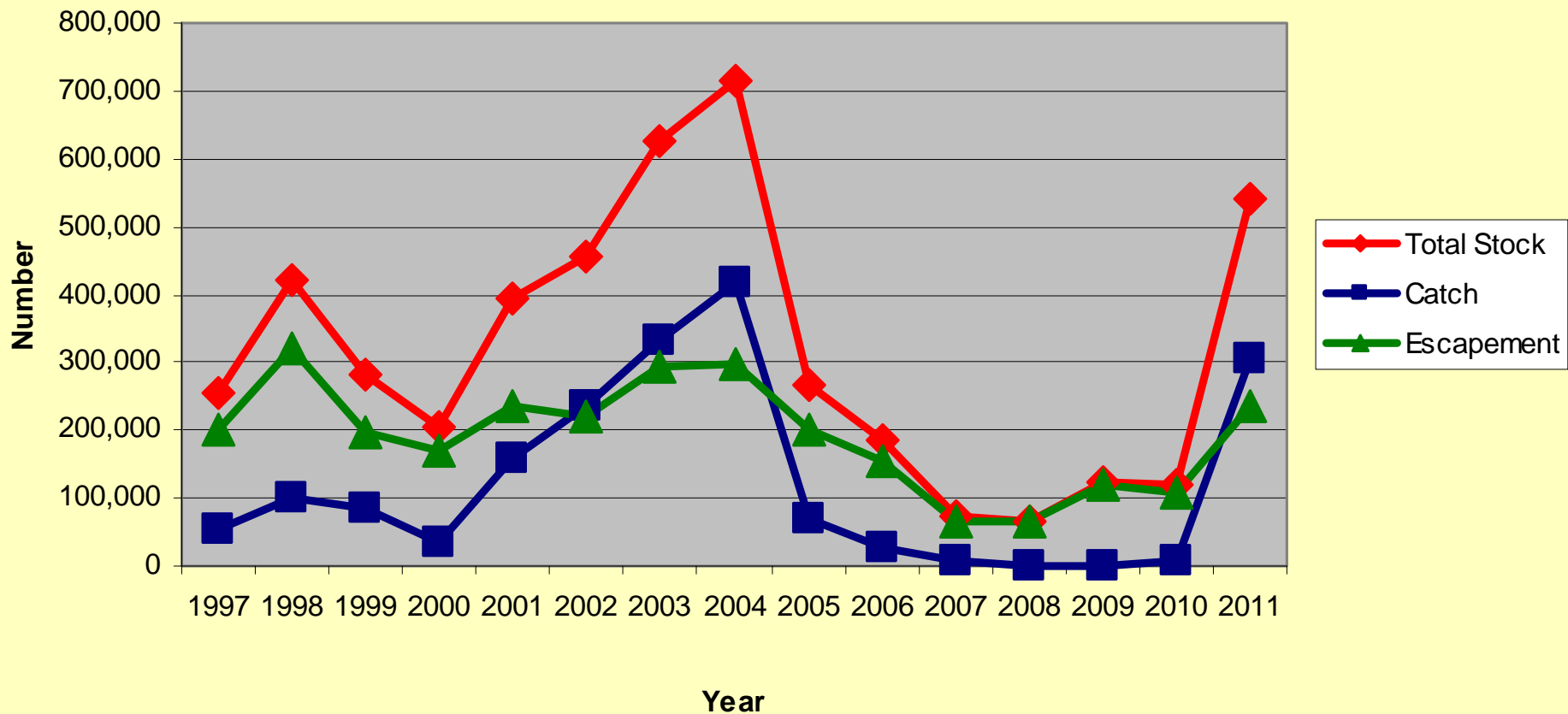


# Area 7 Escapements



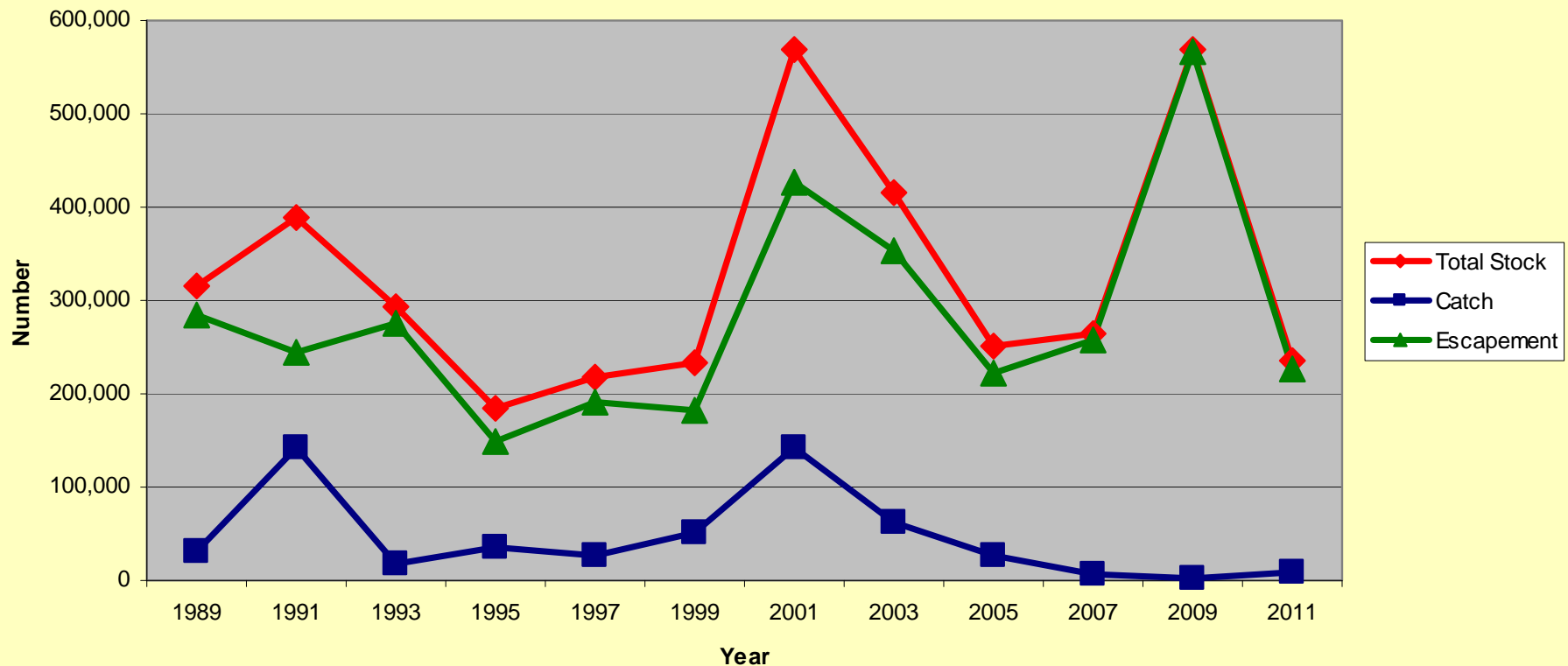
# Area 7 Chum

## Catch/Escapement/Total Stock



# Area 7 Pink

## Catch/Escapement/Total Stock



# Area 8

## Catch

### Area 8 Gillnet - Total Catch

chum – 32,141

pink – 1,899

chinook – 5,052

coho - 671

### Area 8 Seine - Total Catch

chum – 1,185

pink - 1,512

### Dean Channel GNA - July 11 – Aug 23

Chum 23,157; Pink 1,520; Chinook 9

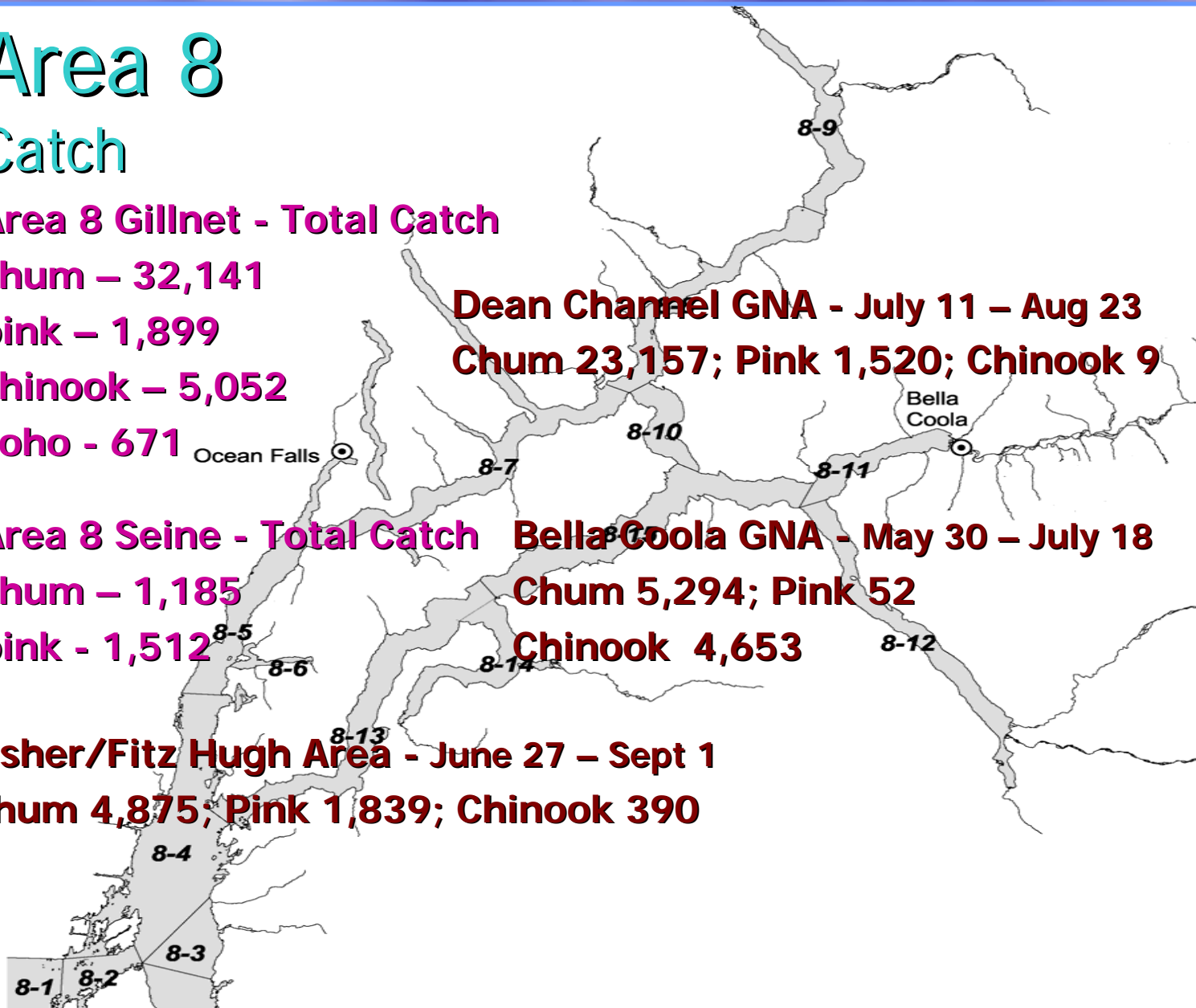
### Bella Coola GNA - May 30 – July 18

Chum 5,294; Pink 52

Chinook 4,653

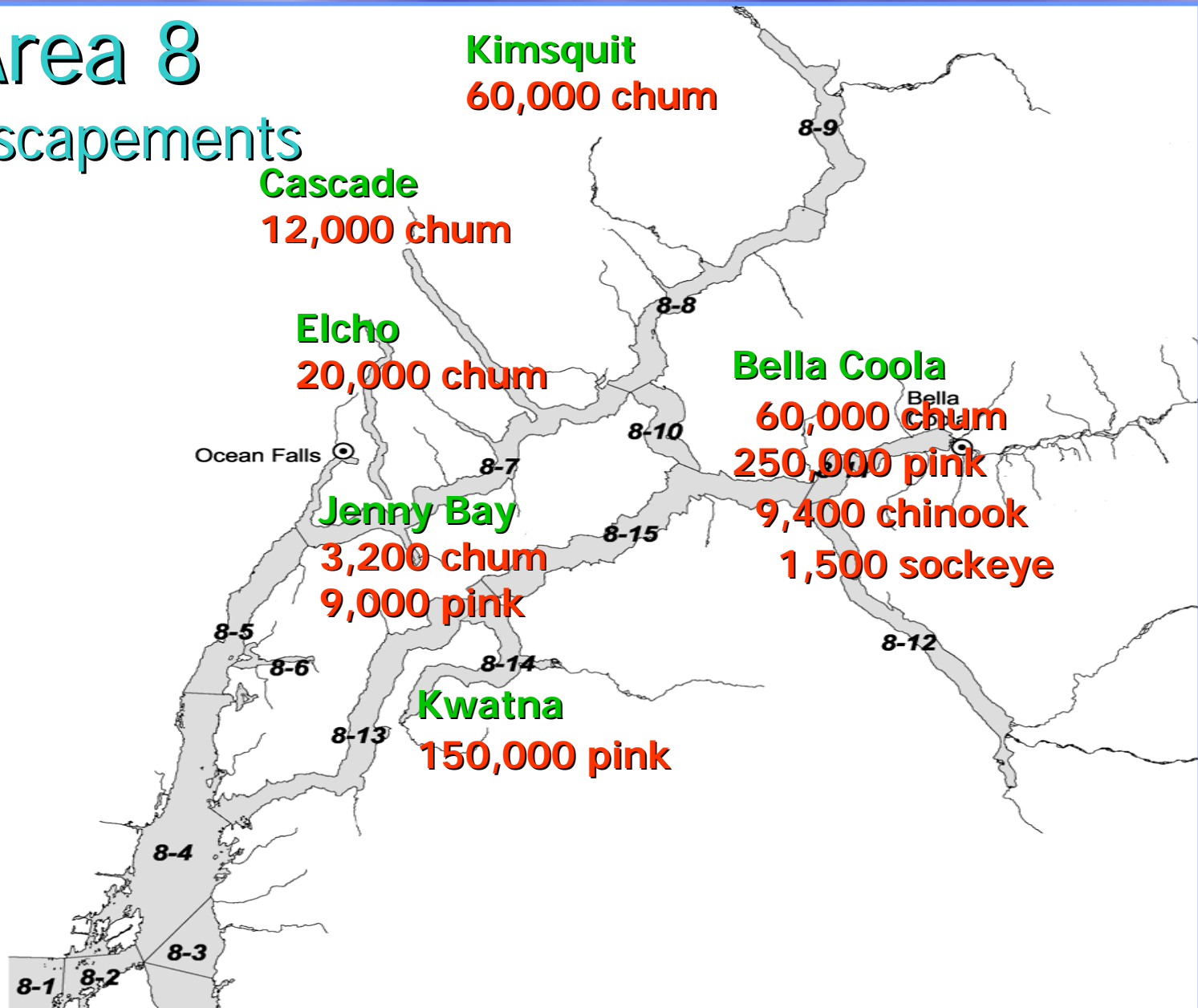
### Fisher/Fitz Hugh Area - June 27 – Sept 1

Chum 4,875; Pink 1,839; Chinook 390



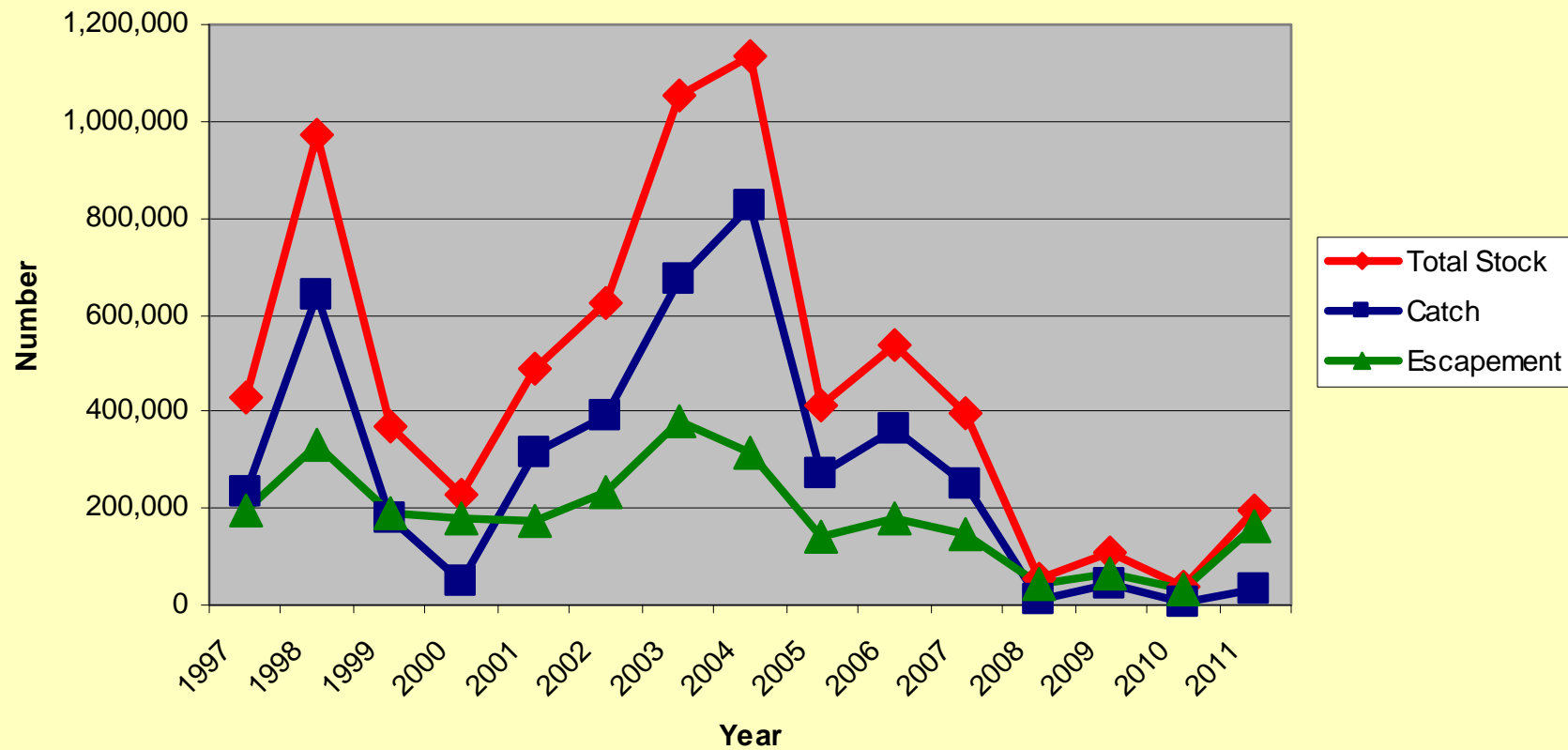
# Area 8

## Escapements



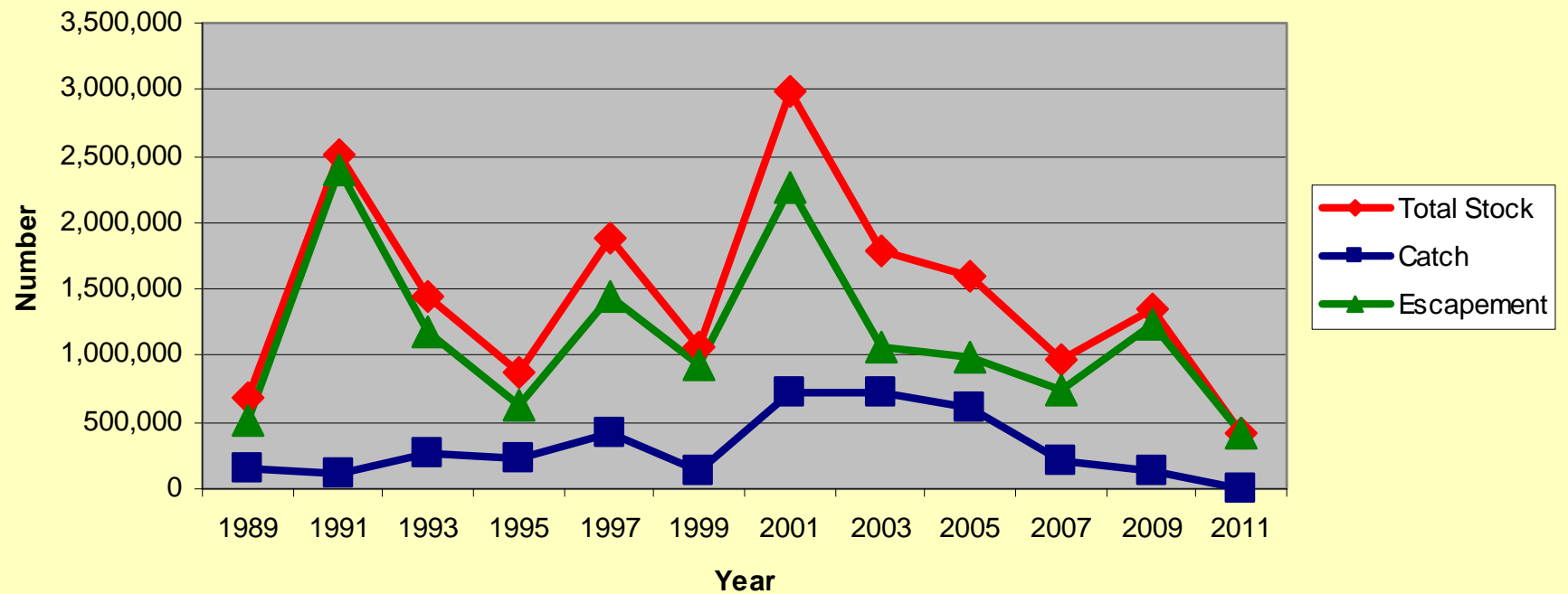
# Area 8 Chum

## Catch/Escapement/Total Stock



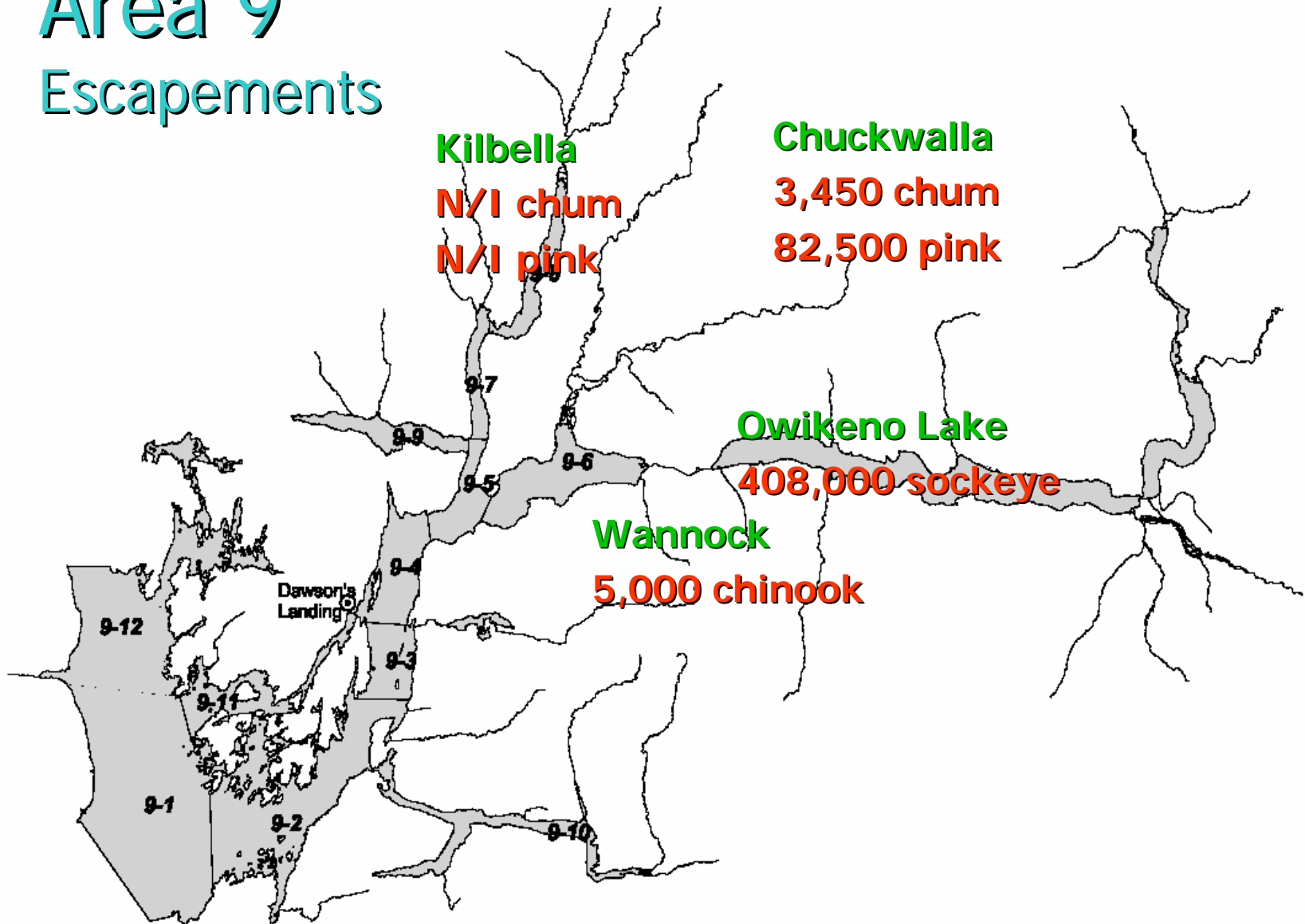
# Area 8 Pink

## Catch/Escapement/Total Stock

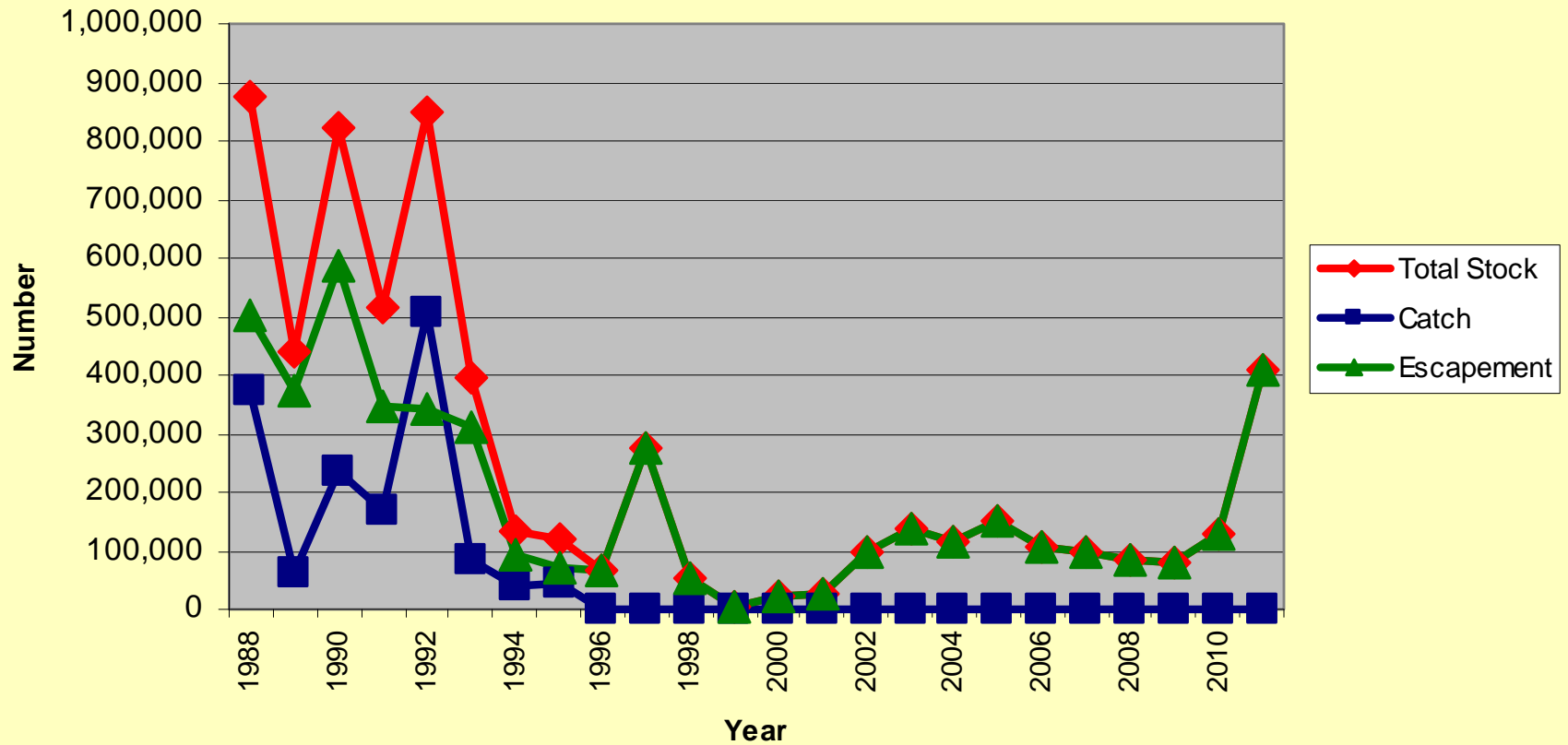


# Area 9

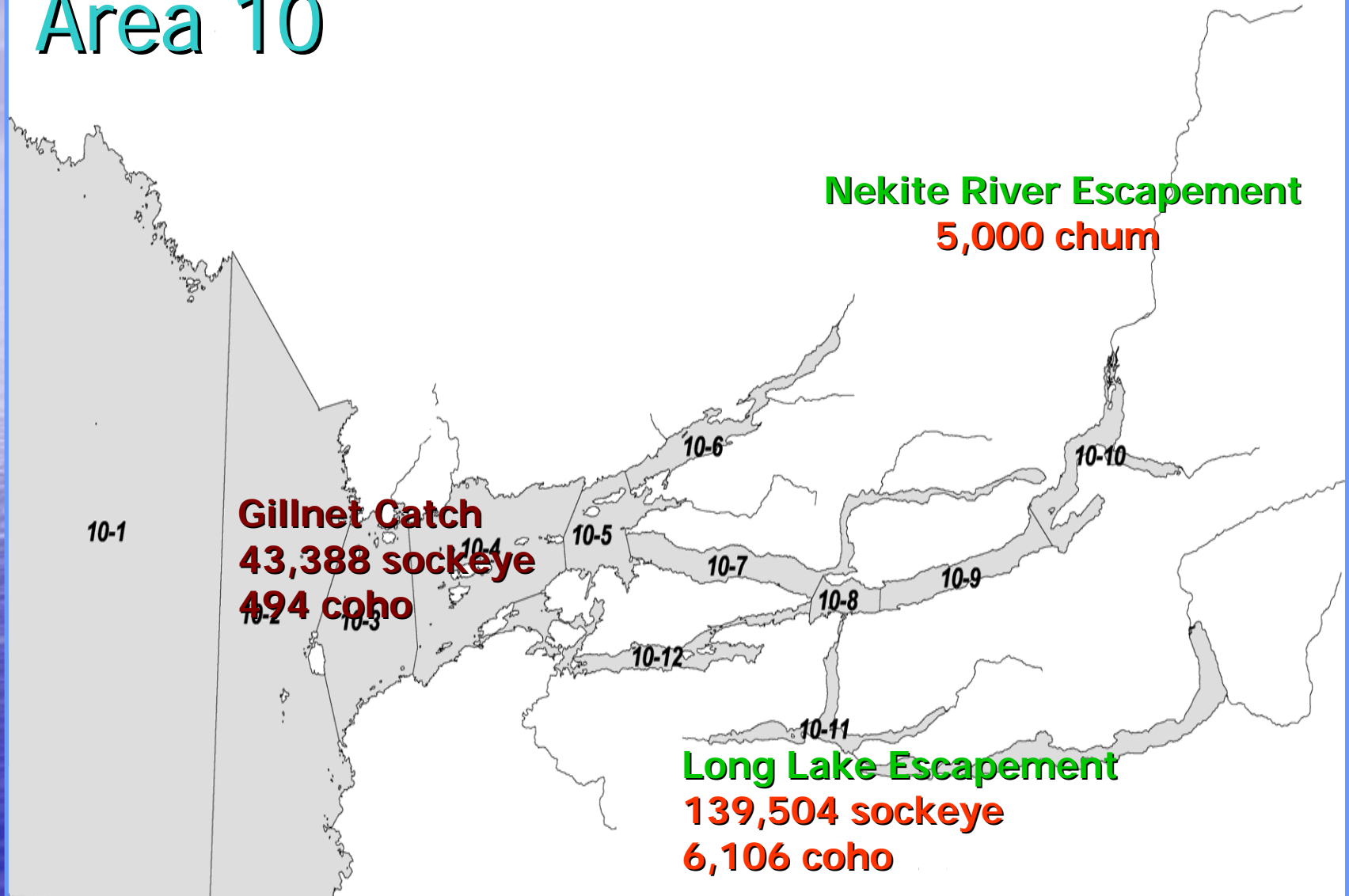
## Escapements



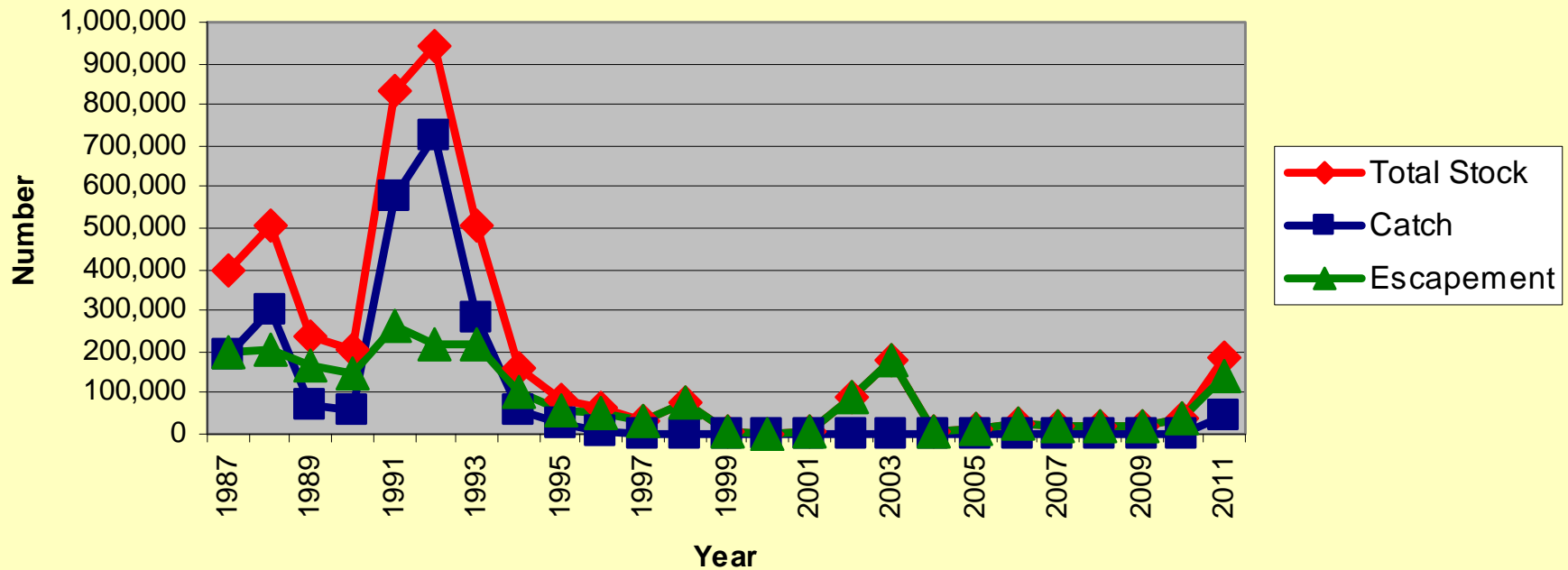
# Area 9 Sockeye Catch/Escapement/Total Stock



# Area 10



# Area 10 Sockeye Catch/Escapement/Total Stock



Thank You!

Have a Great  
Holiday  
Season!

The End...