

Resource Management



2011 Salmon Post Season Review

Dec 08, 2011

Steven Groves

Resource Management

North Coast



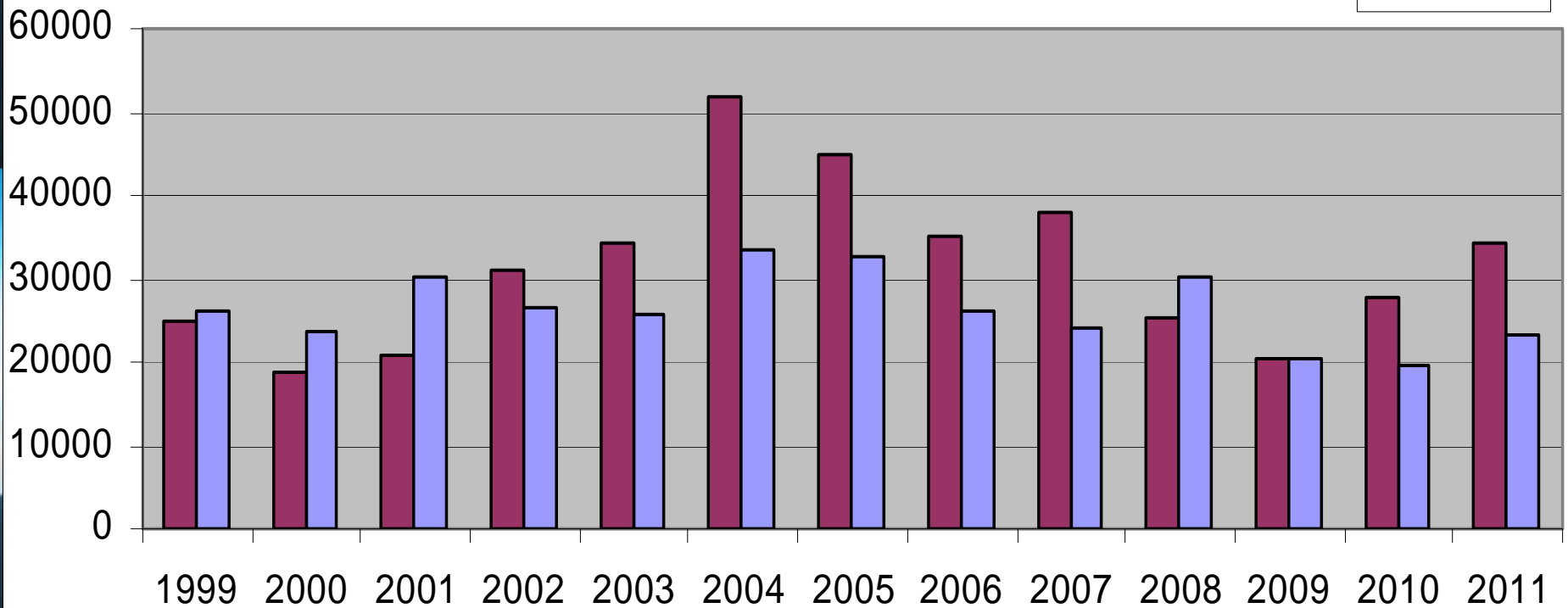
Area 1 Recreational Chinook

Haida Fisheries Program

Haida Gwaii Recreational Fishery Report (Preliminary)

Retained Chinook Area 1

■ Chinook
■ Effort



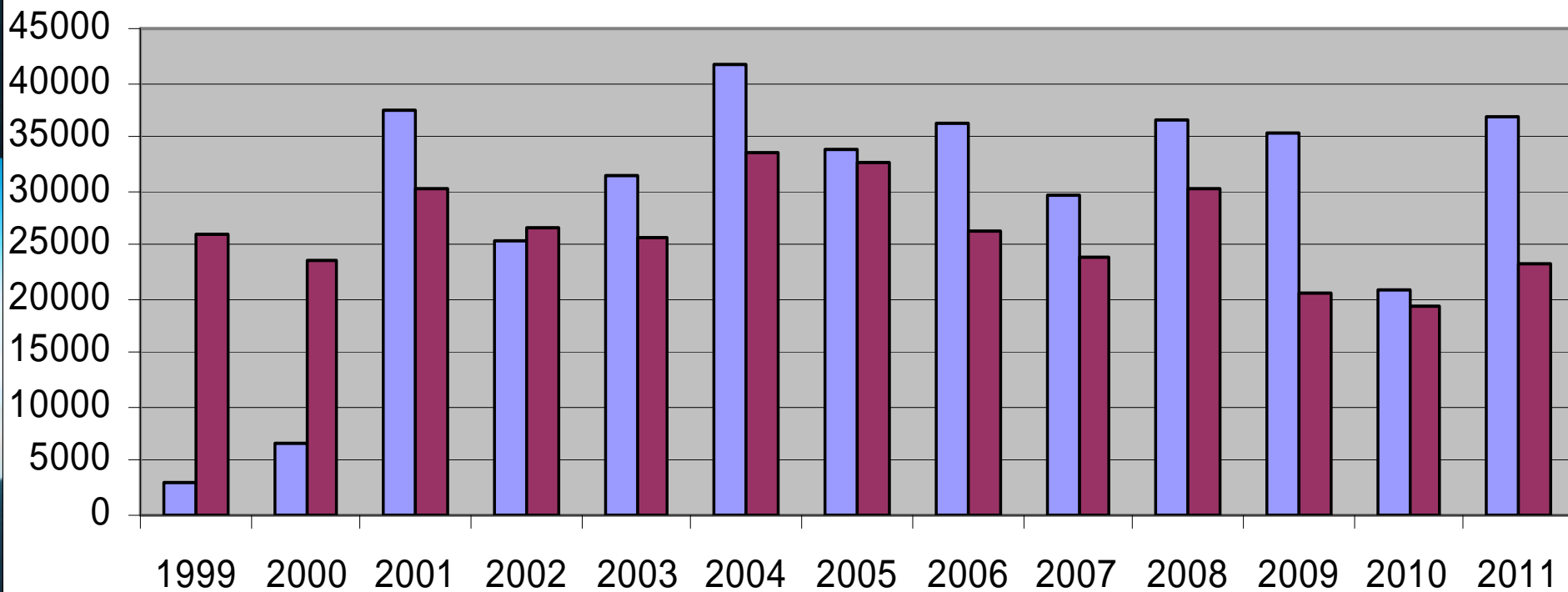
Area 1 Recreational Coho

Haida Fisheries Program

Haida Gwaii Recreational Fishery Report (Preliminary)

Retained Coho - Area 1

■ Coho ■ Effort



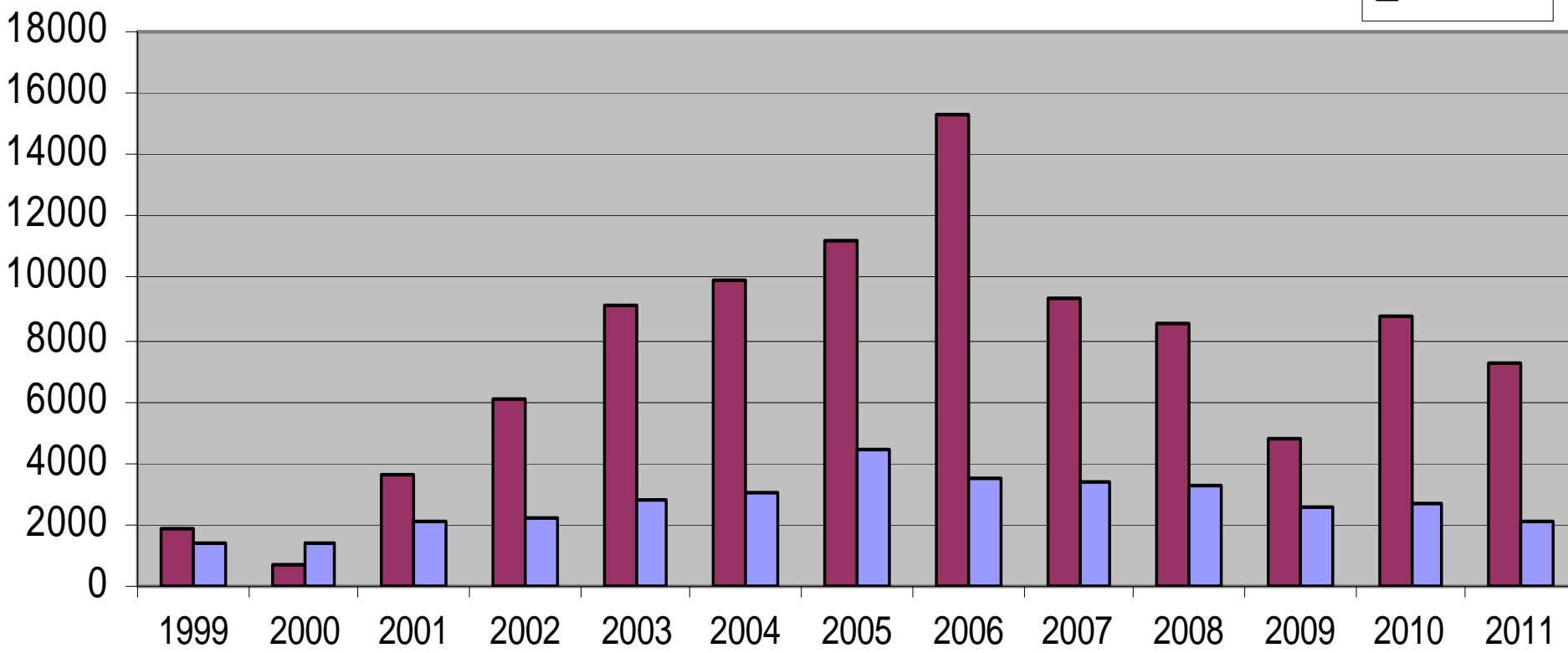
Area 2W Recreational Chinook

Haida Fisheries Program

Haida Gwaii Recreational Fishery Report (Preliminary)

Retained Chinook Area 2

■ Chinook
■ Effort



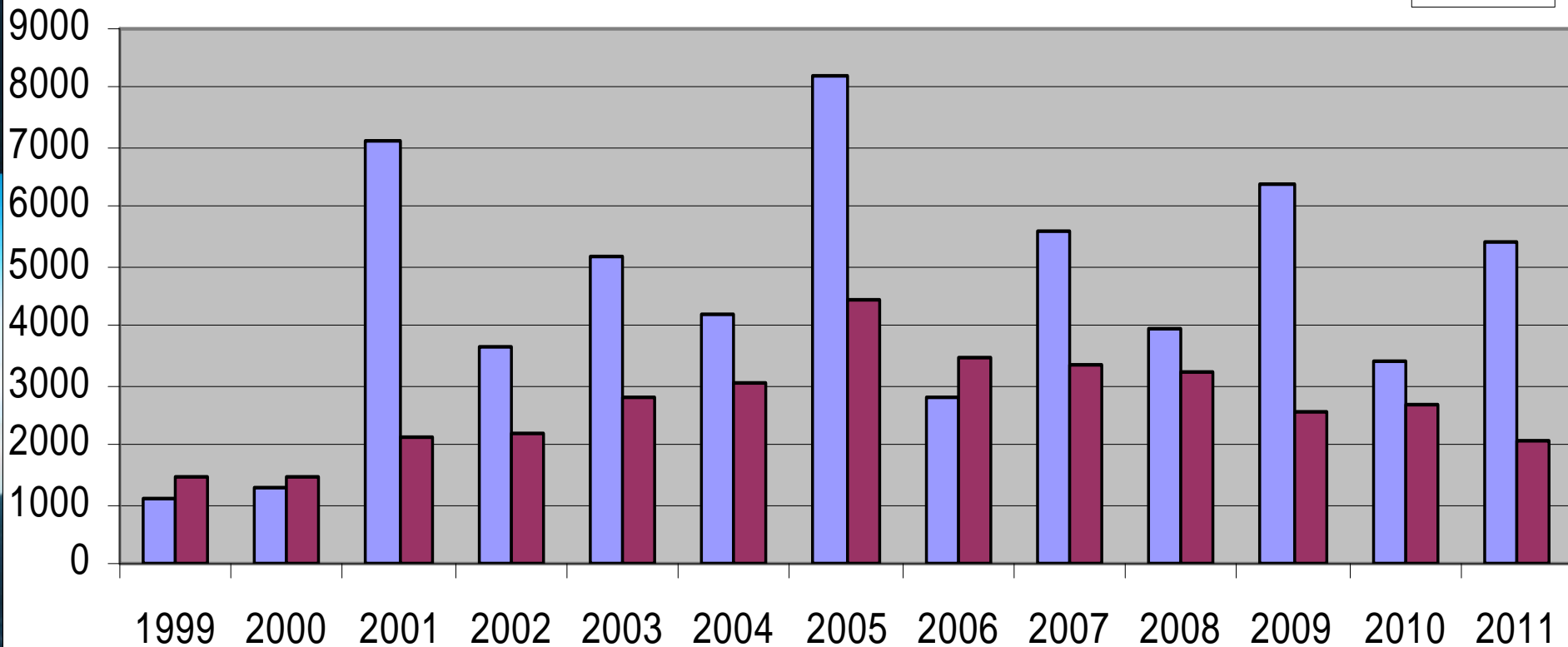
Area 2W Recreational Coho

Haida Fisheries Program

Haida Gwaii Recreational Fishery Report (Preliminary)

Retained Coho - Area 2

Coho
Effort



Area 1-2 Commercial Net

- There were no surplus terminal pink or chum salmon harvest opportunities identified in Area 1 and 2.



Areas 1, 2E and 2W Escapement Summary

- **Area 1** – Limited info due to high water levels.
- **Area 2E**
 - **Sockeye:** Average, except Copper which was largest in last 30 years with 20K escapement and 10K FSC.
 - **Chum:** Escapement is very poor coming off a very bad brood year. Escapement slight better than brood.
 - **Coho:** No fence data for Pallant (~17K). Tlell - coho lowest returns on record 4.5K.
 - **Pinks:** Off year, but good returns to Tlell and Copper.
- **Area 2W** – Tasu chum 5-10% above target. In general Area 2W chum are close to target.

Troll Catch – All Areas

SOCKEYE – 6,651

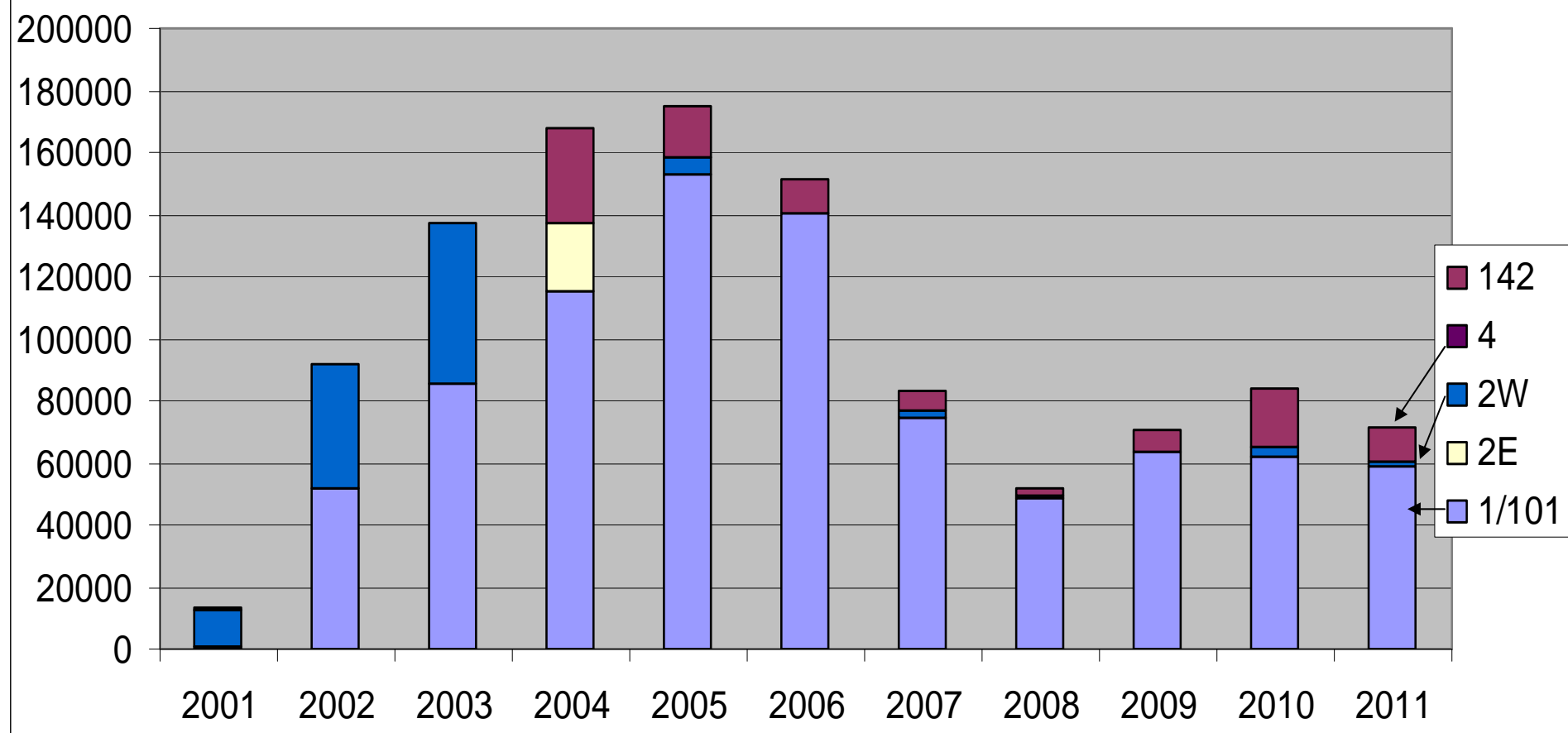
COHO – 296,647

PINK – 57,983

CHUM - Closed

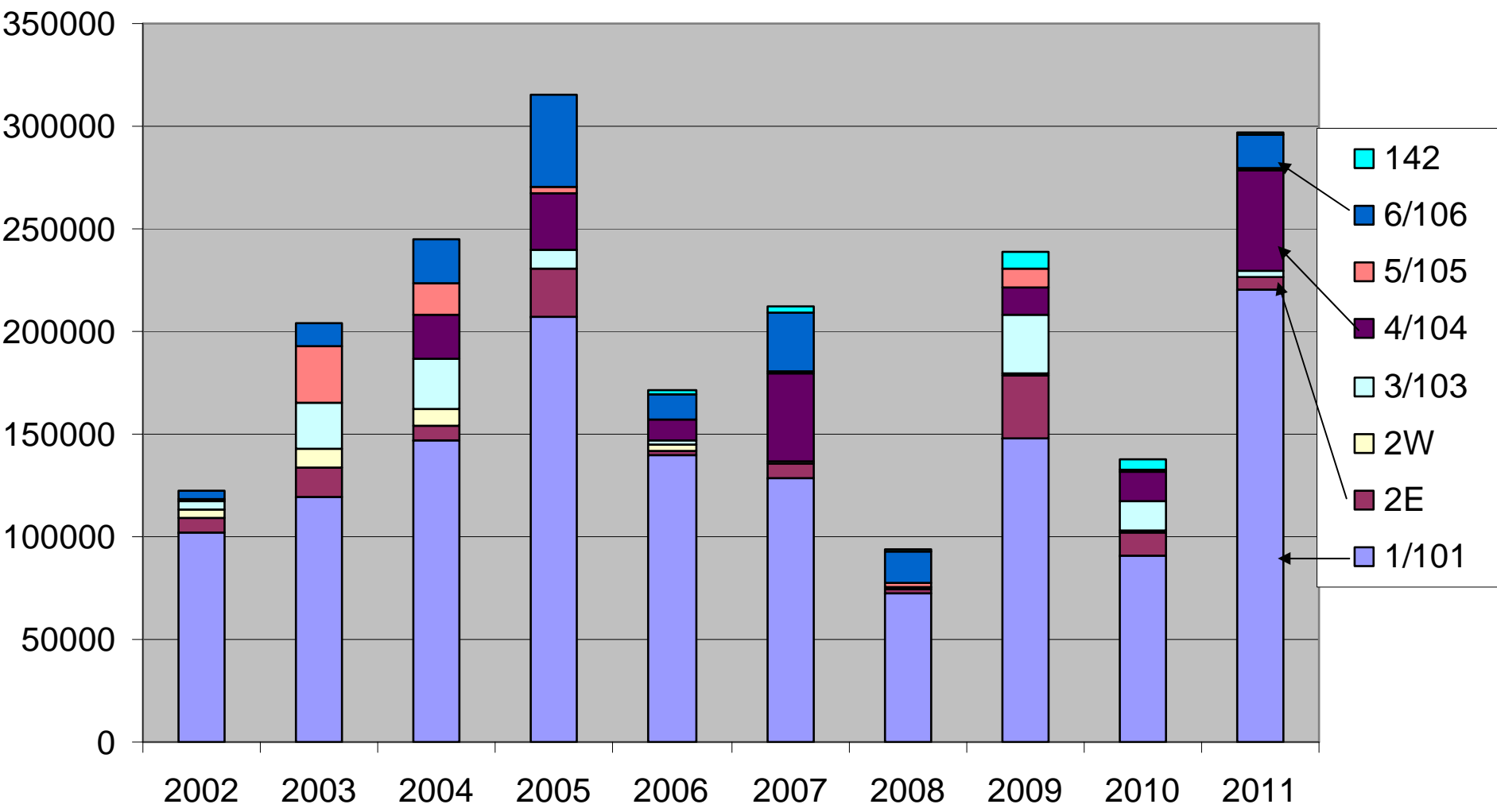
CHINOOK – 74,660

Troll Chinook Catch



(from hailed FOS data)

Troll Coho Catch



Troll Catch Review

Item	Comment	PST Allocation	Troll CH	WCVI CH	Sport CH
Canadian Allocations	468 Chinook per troll vessel (ITQ)	182,400	132,400	3,477	50,000
June 9 to June 21 Catch	10.3% of trollers achieved quota		74,660	5,318	15,500
June 22 to Sept. 30	Troll Closed		0		32,500
22 ATP (DFO) licenses	Used regionally		10,296		
	Remaining	49,444	47,444	-1,841	2,000

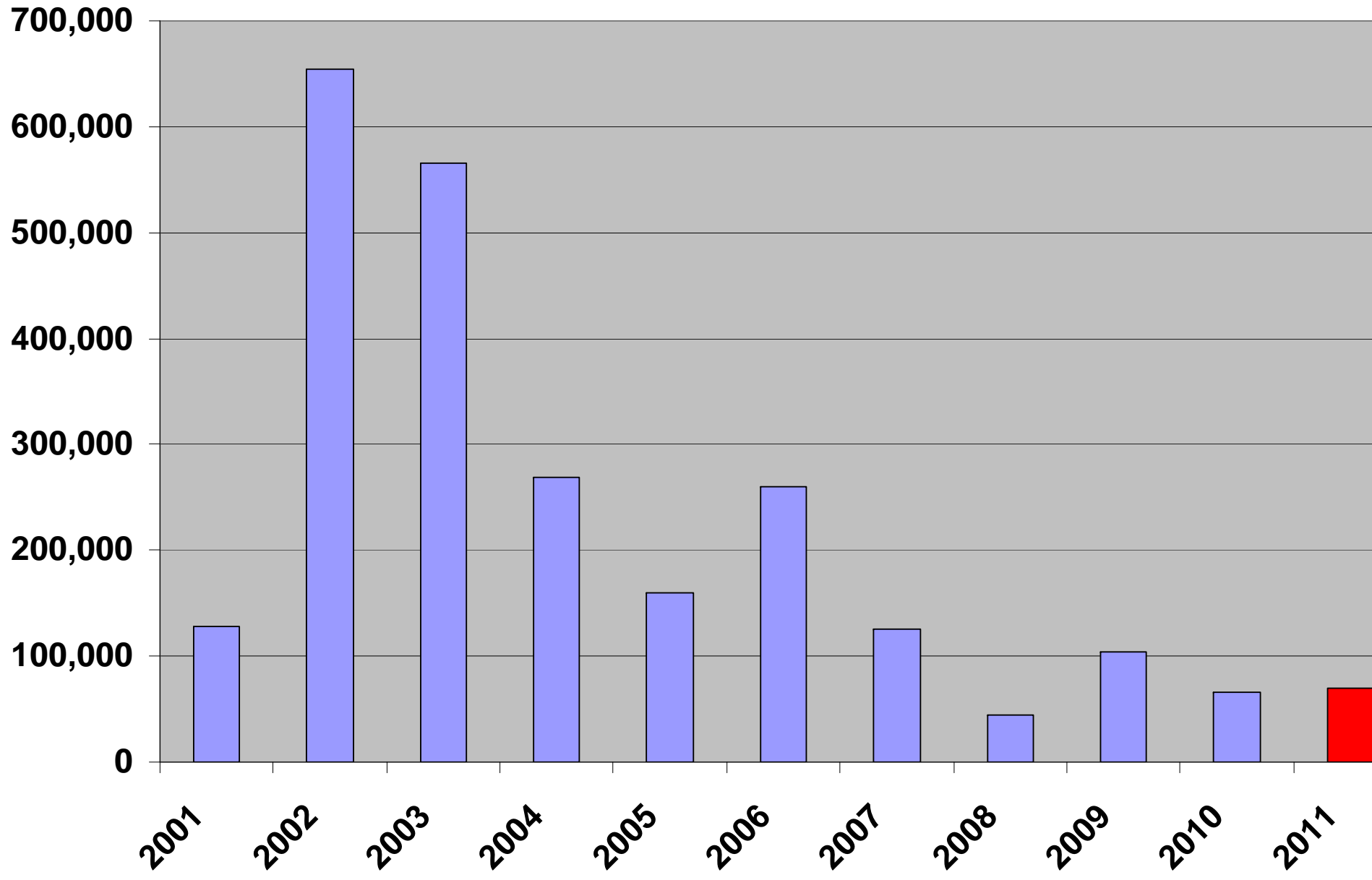
Haida First Nation FSC Fisheries

- **Sockeye – 20,300**
 - Above average
 - Majority taken terminally this year
- **Coho – 1,330**
- **Pink – 0**
- **Chum – 25**
- **Chinook – 1,810**
 - Majority in 2W with hook and line

Area 3 Gill Net

- First gill net sockeye opening on June 19 with 125 vessels.
- Non-retention chums with area closures to protect migrating chums.
- Kwinageese restrictions from July 8-28th.
- Gill net sockeye catches in A3 modest.
- Coho retention allowed for 4 openings in August.
- 10 openings (avg. 16.5) with max 145 boats.
- 1,018 vessel operating days (avg. 3052).

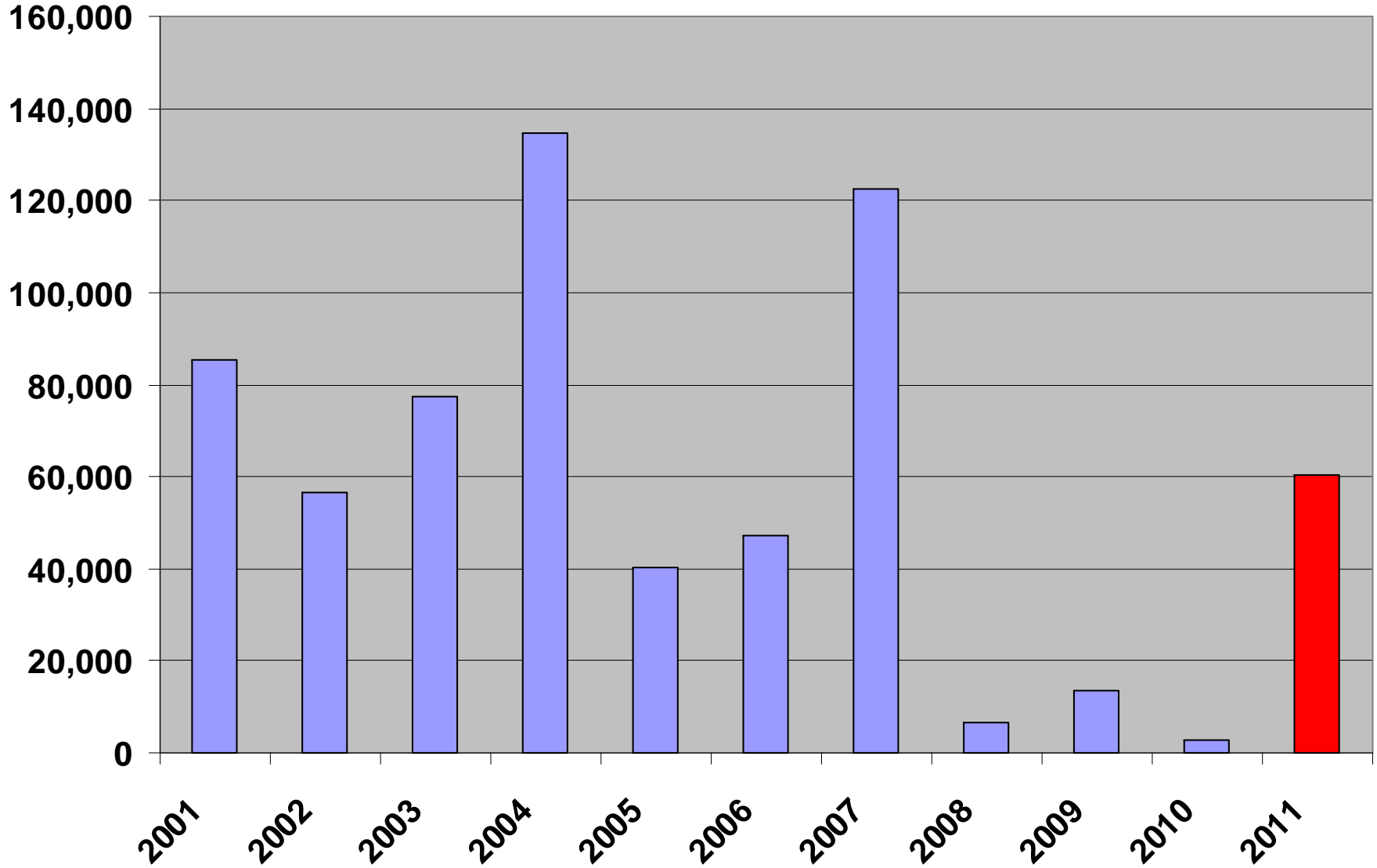
AREA 3 GILLNET SOCKEYE CATCH



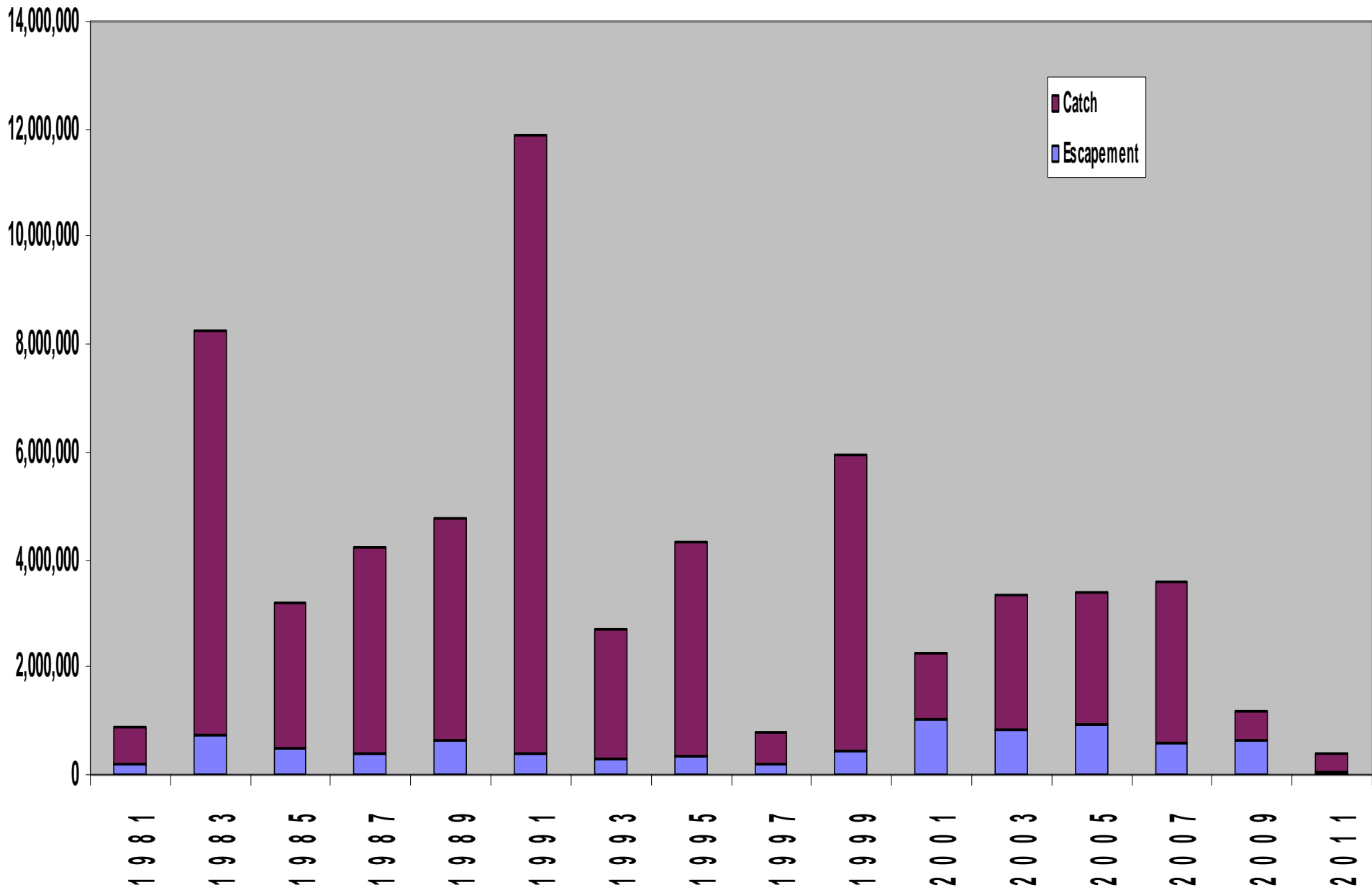
Area 3 Seine

- First seine opening July 11 with 12 vessels.
- Sockeye good, but pink fishing poor.
- Coho retention for 2 openings in August.
- 6 openings (avg. 16) with max 49 boats.
- 164 vessel operating days (avg. 351).

AREA 3 SEINE SOCKEYE CATCH



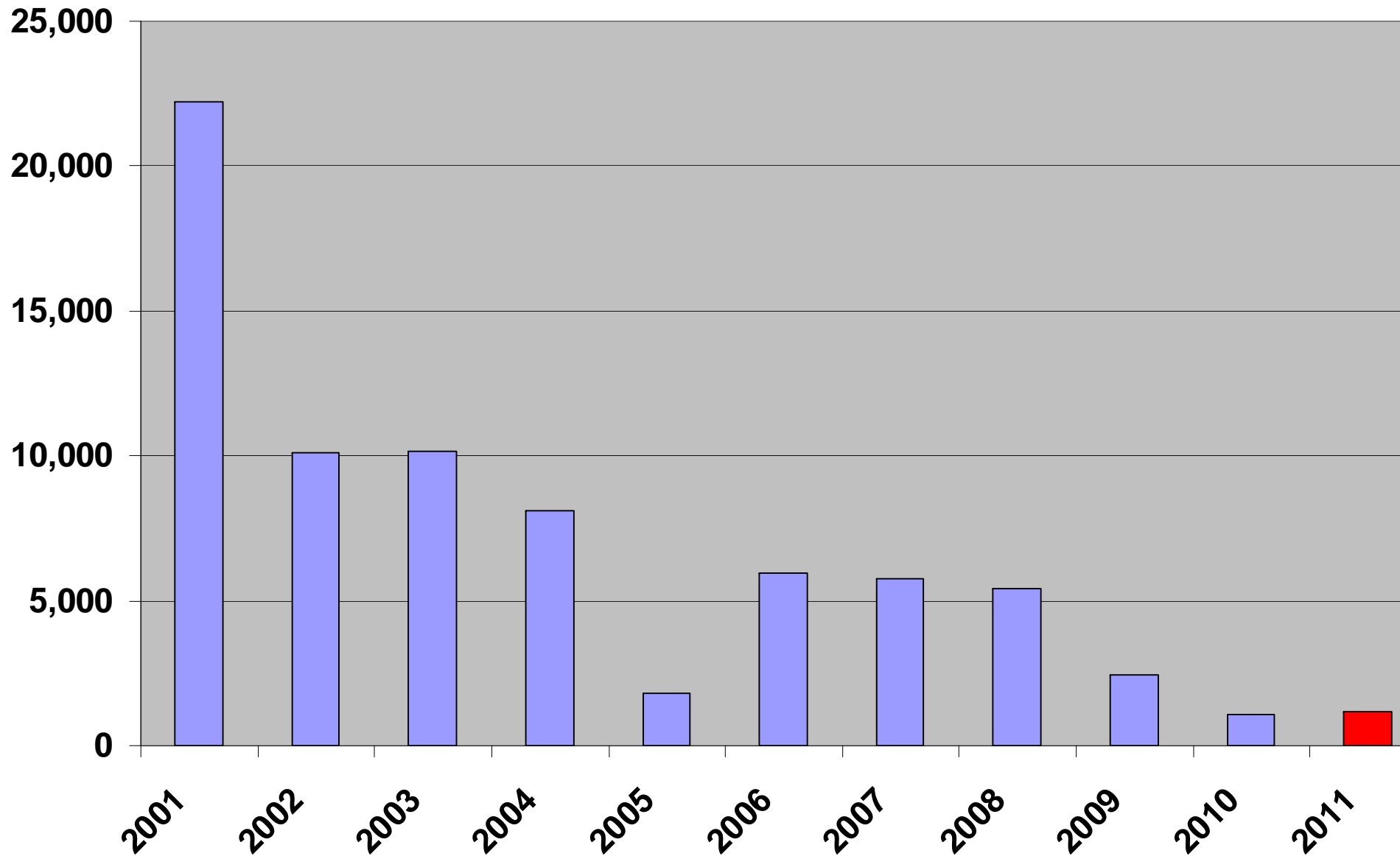
Area 3 Odd-Year Pink Salmon Catch and Escapement (1981-2011)



Area 4 Gill Net Chinook

- The first Chinook opening on the Skeena took place June 20 & 21 (30 hrs)
- 68 gill nets participated for a total catch of 1,193 pieces.
- Due to poor gill net catches and a low Chinook index past the Skeena River Tyee Test fishery a second (Chinook) gill net opening did not take place.

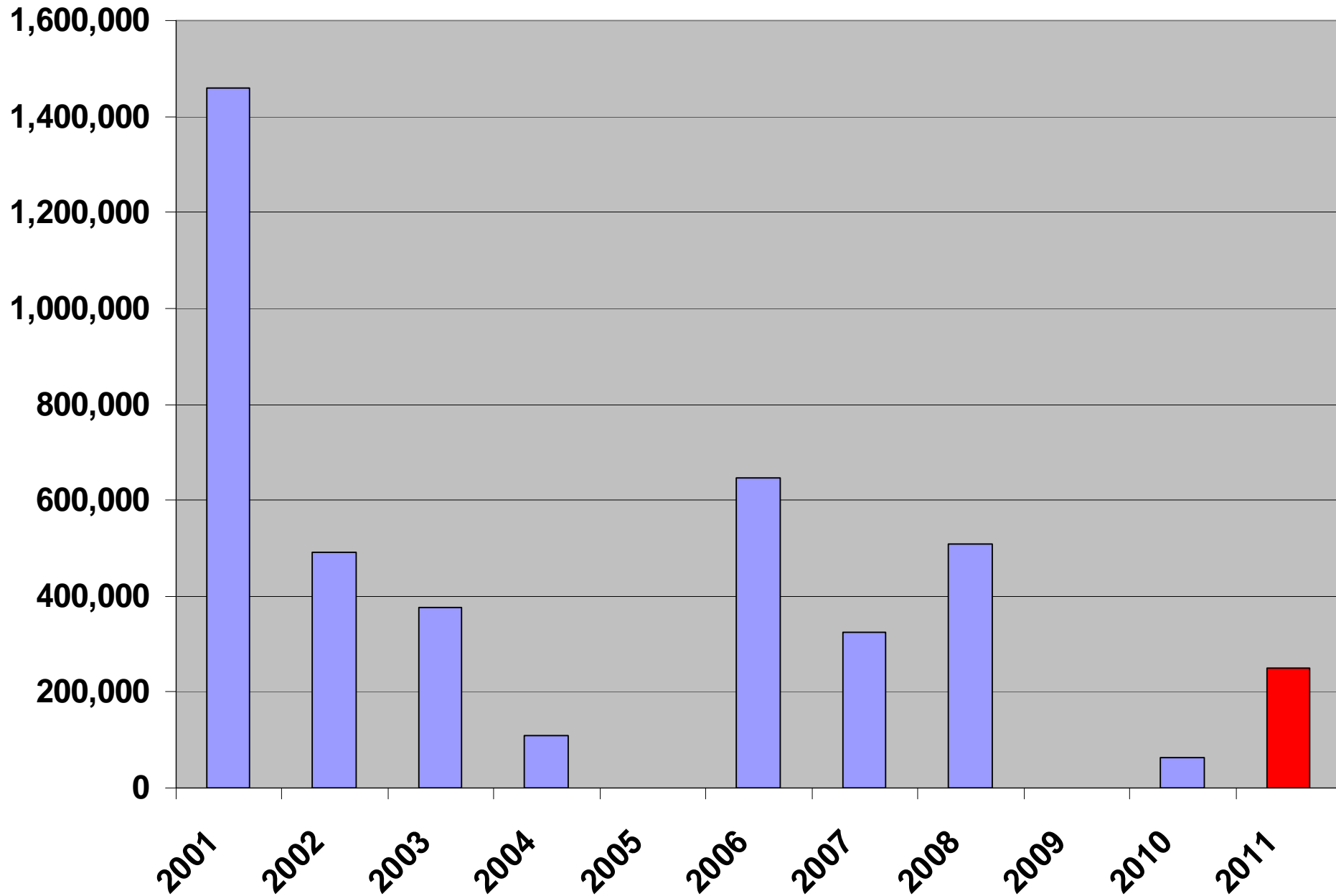
AREA 4 GILLNET CHINOOK CATCH



Area 4 GN Sockeye

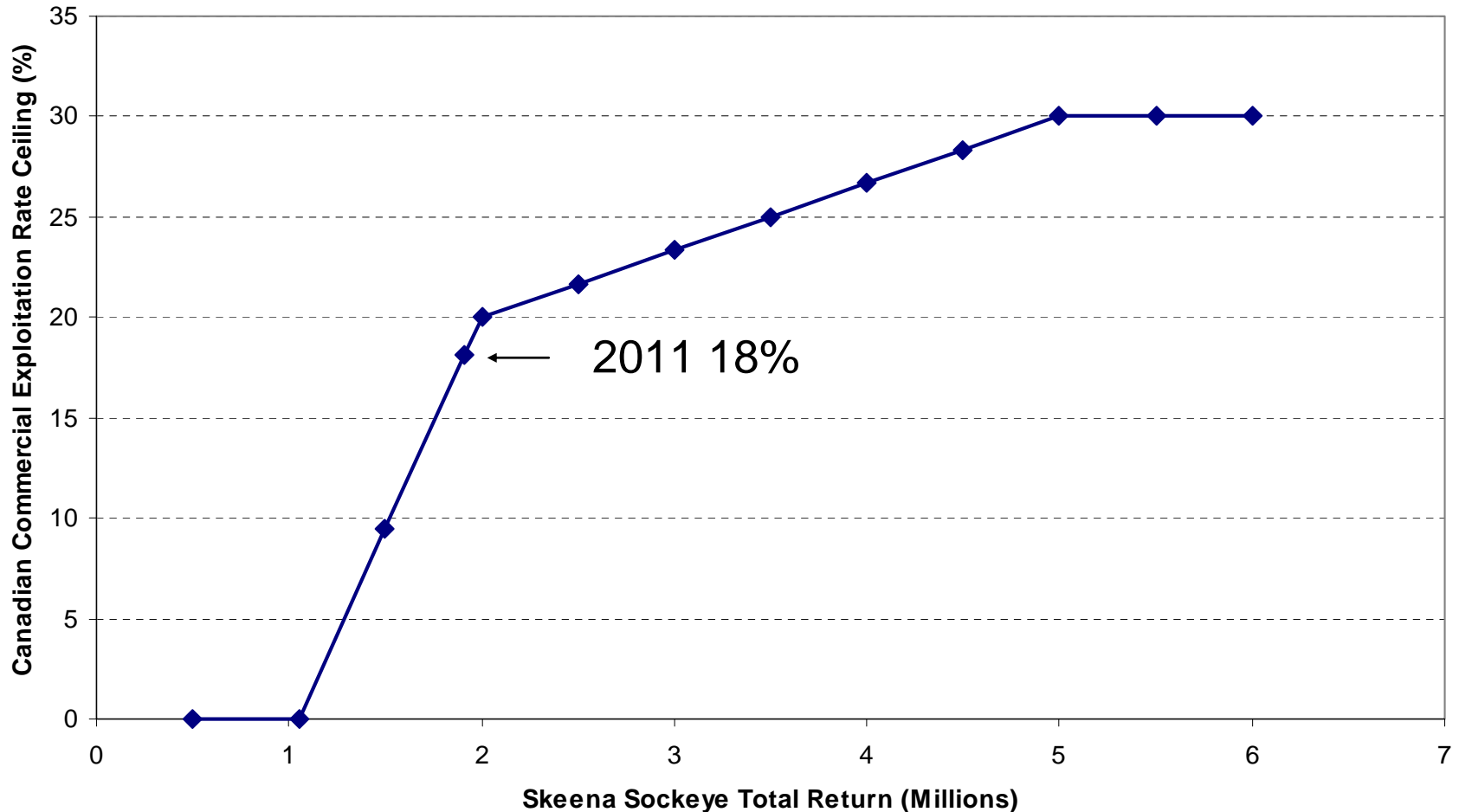
- Gill nets fished 8 sockeye openings
 - (July 13th to Aug 15th).
 - 3 regular and 5 selective openings.
 - Average = 12 openings.
- 1,595 vessel operating days (Avg. 3314).

AREA 4 GN SOCKEYE CATCH



Area 4 Sockeye Openings

Skeena Sockeye Commercial Exploitation Rates



Area 4 SN ITQ Sockeye

- The ITQ seine fishery was opened in Area 4 July 15 to July 20 & August 5 to August 14.
- Final sockeye ITQ catch of 60,843 (Avg. 127,174)
- Final pink catch of 97,970 (not quota) (Avg. 509,186).
- Coho retention from August 5 to August 14.

Area 3/4 Inland & ESSR

Economic Opportunities Nass/Skeena 2011

First Nation	Area of Harvest	Date	Species	Allocation	Catch
Gitanyow	Meziadin Fishway	Aug	Sockeye	3,000	3000
NCSFNSS	Lower Skeena	July	Sockeye	887	595
Gitksan	Skeena (near Kitwanga)	Aug	Sockeye	26,713	21,529
Lake Babine	Babine Counting Fence	Aug	Sockeye	32,848	32,848

ESSR Skeena 2011

First Nation	Area of Harvest	Date	Species	Allocation	Catch
Wet'suwet'en	Moricetown	Aug/Sept	Pink	5,000	4,000
Lake Babine	Babine Lake	Aug/Sept	Sockeye	234,000	185,393



NASS / SKEENA FSC CATCH 2011

SKEENA	Sockeye	Coho	Pink	Chum	Chinook	Steelhead
LOWER	42,043	125	861	38	612	94
MID	63,146	1,752	7,033	123	3,652	1,343
UPPER	41,093	48	0	0	112	2
	146,282	1,925	7,894	161	4,376	1,439

Nass	10,091	18	0	0	103	0
------	---------------	-----------	----------	----------	------------	----------

- Catches similar to previous years
- Steelhead numbers up
- Excellent monitoring

Preliminary and not complete as of Nov 29,2011

Lower Skeena includes approach waters

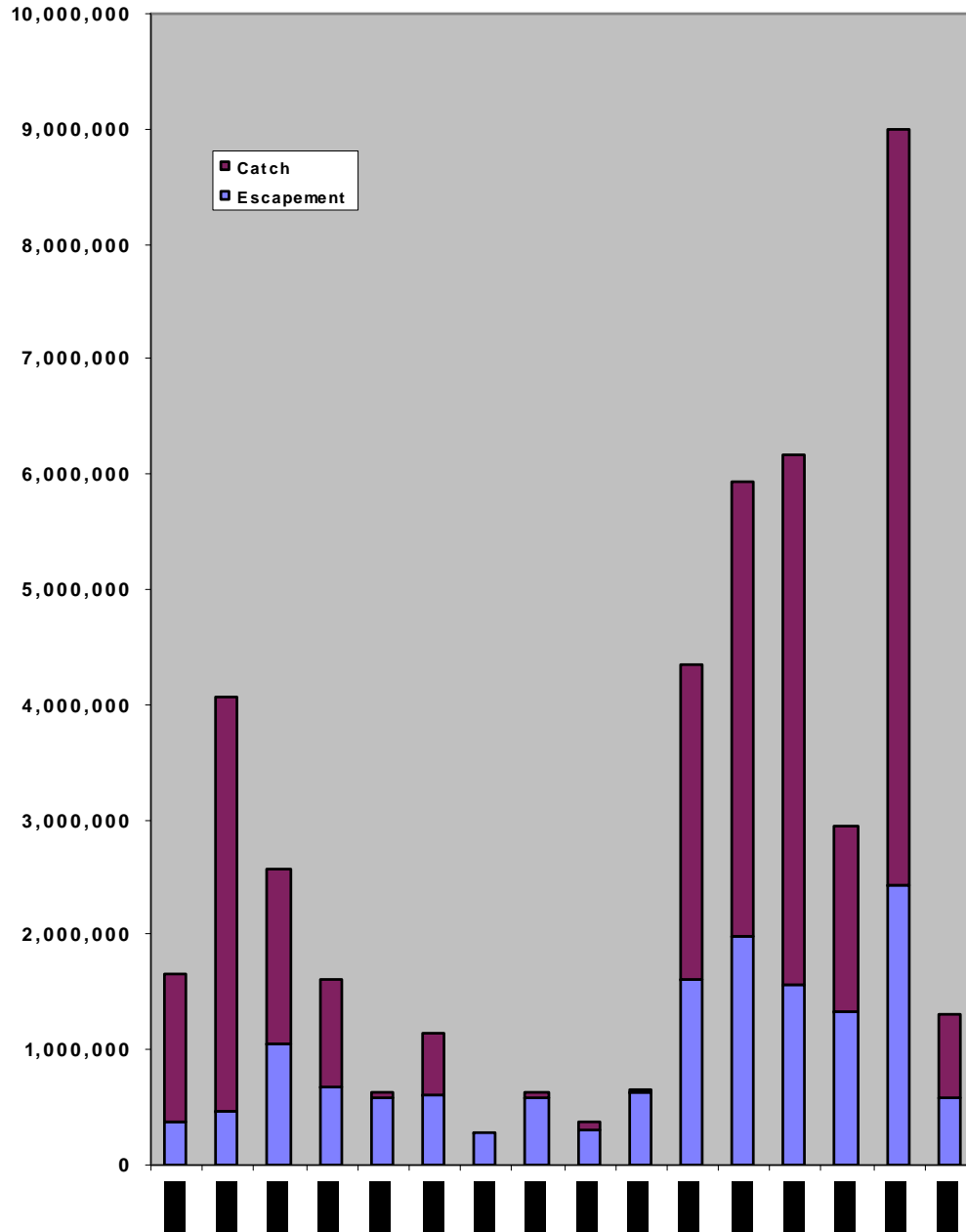
Area 6 Commercial 2011

- First seine fishery July 11th
- Pink returns were modest
 - 6 seine fisheries (1 day/wk) ending Aug 15
 - 179 vessel operating days (Avg. 425)
 - Catch of 700K (Avg. 3.9 million).

Area 6 Commercial 2011

- Chum returns were better than forecasted.
- Gill net fishery opened Aug 8 in Douglas Channel
 - Catches moderate.
 - Total of 6 days over two weeks
 - 92 vessel days (Avg. 460).
 - catch of 18,000 chum (Avg. 74,000).
- Pink escapements were moderate and
- Chum escapements were better than brood
 - Esp. to Dala, Kitimat and Kemano.

Area 6 Odd-Year Pink Catch and Escapement (1981-2011)



2012 Pink 1-6 Expectations Summary

Statistical Area	Brood Year Escapement	2012 Expectations
1, 2W, 2E	High	Potential for good returns
3	Low	Poor return expected
4	Very Low	Very poor return expected
5	Very Low	Very poor return expected
6	Very Low	Very poor return expected (Added concern of fall Flood in 2010)