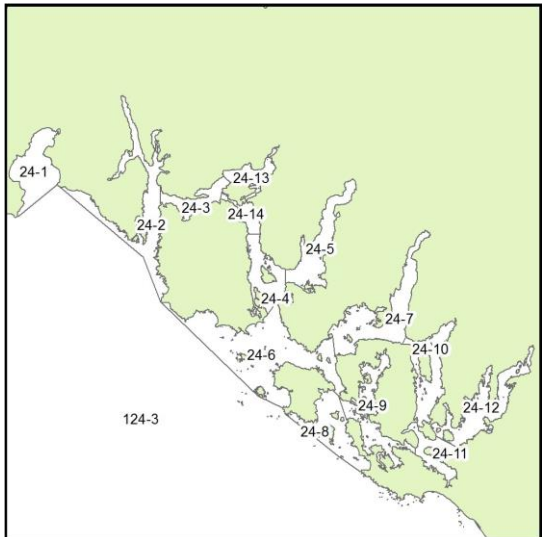




Areas 24 and 124 Clayoquot and offshore areas 2023 Coho openings and other closures



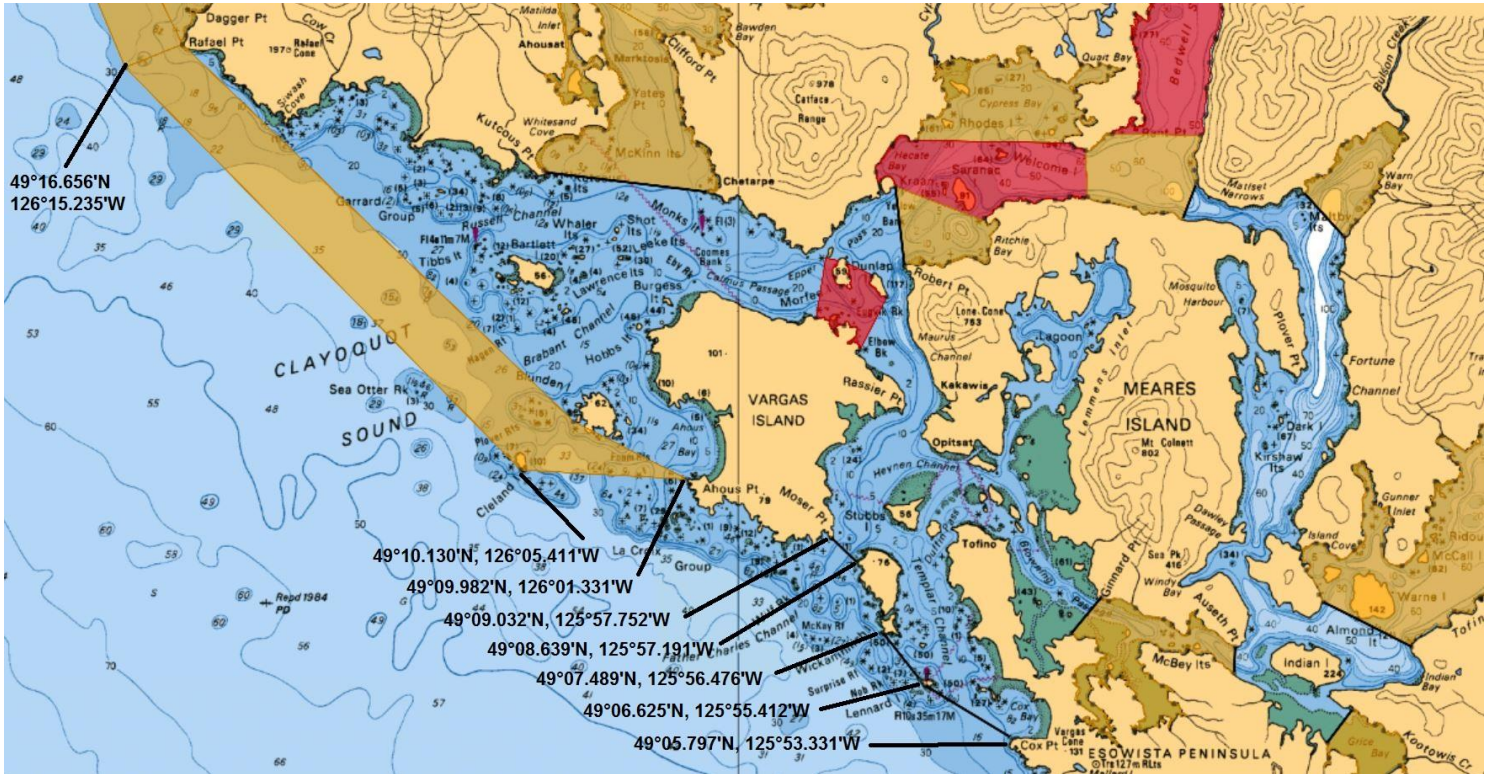
Area 24 and 124	
Date	Regulation
Jan 1 – May 31	Coho non-retention
Jun 1 – Dec 31	2 Coho per day, hatchery marked only
Jun 1 – Dec 31	2 Coho per day, marked or unmarked
Aug 1 – Oct 31	Finfish closure
All year	Finfish closure
All year	Finfish closure – Rockfish Conservation Area (RCA)
Area 23, 123, 25 and 125	Refer to areas 23, 123, 25, and 125 public notices





Areas 24 and 124 Clayoquot and offshore areas 2023 Coho openings and other closures

Clayoquot Sound – important waypoints



Date	Daily limit	Coho length restriction and special management measures	Location
Jun 1 – Dec 31	2	Two (2) per day, hatchery-marked only	That portion of 24-8 seaward of a line drawn from Cox Point to the Lennard Island light, to Echachis Island to Wickaninnish Island to Moser Point. Area 124 with the exception of the closures described below:
Jun 1 – Dec 31	2	Two (2) per day, marked or unmarked	Area 24 (excluding the portion of 24-8 listed above) with the exception of the closures described below:
Aug 1 – Oct 31	0	Finfish closure	Subarea 24-1 to 24-5, 24-7, 24-12 to 24-14
Aug 1 – Oct 31	0	Finfish closure	That portion of sub area 24-6 northerly of a line commencing at Kutcouc Point (49° 14.961N, 126° 04.817W) on Flores Island to 49° 14.637 N, 126° 00.825 W on Vancouver Island near the Chetarpe I.R.
Aug 1 – Oct 31	0	Finfish closure	Browning Passage that portion of Subarea 24-9 easterly of a line commencing at Ginnard Point (49 degrees 08.069'N and 125 degrees 51.169'W) on Meares Island to 49 degrees 07.483'N and 125 degrees 51.811'W on Vancouver Island and westerly of a line commencing at Auseth Point(49 degrees 07.265'N and 125 degrees 47.758'W) on Meares Island continuing true south to 49 degrees 06.820'N and 125 degrees 47.785'W on Vancouver Island. Warn Bay - that portion of Sub area 24-10 inside a line between boundary signs at the entrance to the Warn Bay. Grice Bay - that portion of Sub area 24-11 inside a line between boundary signs approximately half way inside Grice Bay to the head of Grice Bay.
Aug 1 – Oct 31	0	Finfish closure	That portion of 124-3 approximately 1 nm seaward of the surfline from Hesquiat Harbour southeast to Cleland Island to Ahous Point.
Jan 1 – Dec 31	0	Finfish closure	Kennedy Cove - that portion of 24-12, those waters of Kennedy Cove inside or northwesterly of a line between two fishing boundary signs on the outer southwest corner and the outer northeast corner of the cove.
Jan 1 – Dec 31	0	Finfish closure – Rockfish Conservation Area (RCA)	<ul style="list-style-type: none"> • Bedwell Sound • Estevan Point • Sarnac Island • Vargas Island http://www.pac.dfo-mpo.gc.ca/fm-gp/maps-cartes/rca-acis/index-eng.html