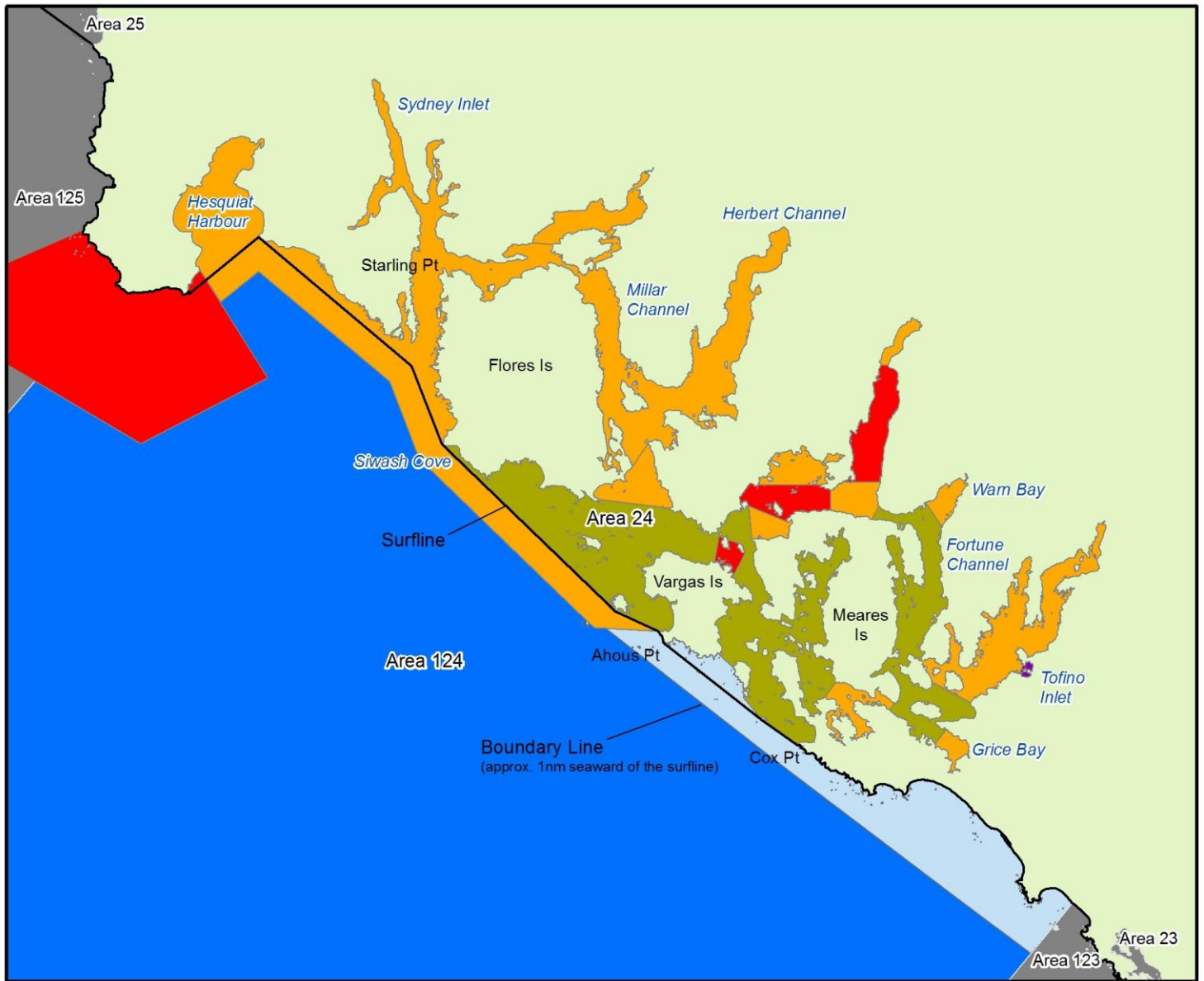


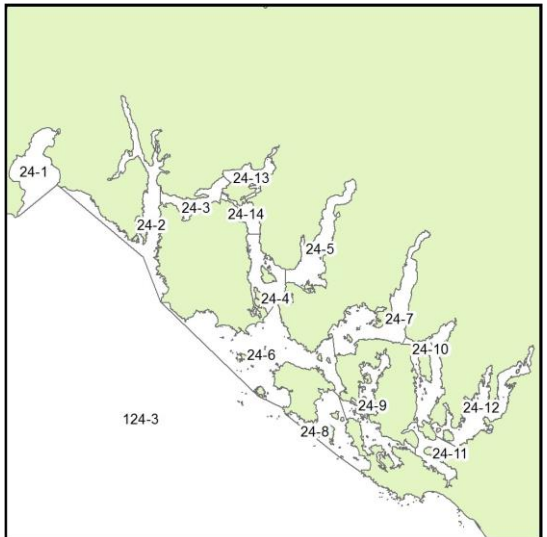


Areas 24 and 124 Clayoquot and offshore areas 2023 Chinook openings and other closures July 15 - December 31



Area 24 and 124

Date	Regulation
All year	2 Chinook per day, minimum size 45 cm, unless specified below
Jul 15 – Dec 31	2 Chinook per day
Jul 15 – Jul 31	2 Chinook per day, maximum size 80 cm
Aug 1 – Dec 31	2 Chinook per day
Jul 15 – Jul 31	2 Chinook per day
Aug 1 – Oct 31	Finfish closure
Jul 15 – Jul 31	2 Chinook per day
Aug 1 – Oct 31	Chinook non-retention
All year	Finfish closure
All year	Finfish closure – Rockfish Conservation Area (RCA)
Area 23, 123, 25 and 125	Refer to areas 23, 123, 25, and 125 public notices





Areas 24 and 124 Clayoquot and offshore areas 2023 Chinook openings and other closures July 15 - December 31

Clayoquot Sound – important waypoints





Areas 24 and 124 Clayoquot and offshore areas 2023 Chinook openings and other closures July 15 - December 31

Date	Daily limit	Chinook length restriction and special management measures	Location
All year	2	2 Chinook per day, minimum 45 cm	Area 24 and 124 with the exception of the closures described below:
Jul 15 – Jul 31	2	2 Chinook per day, maximum 80 cm	That portion of Area 124 seaward of the Boundary Line. See attached map. Coordinates provided in Fishery Notice FN0650.
Aug 1 – Dec 31	2	2 Chinook per day	
Jul 15 – Jul 31	2	2 Chinook per day	Subareas 24-1 to 24-5, 24-7, 24-12 to 24-14
Aug 1 – Oct 31	0	Finfish closure	<p>Ahousaht/Millar Channel - that portion of sub area 24-6 northerly of a line commencing at Kutcous Point (49° 14.961N, 126° 04.817W) on Flores Island to 49° 14.637 N, 126° 00.825 W on Vancouver Island near the Chetarpe I.R.</p> <p>Browning Passage - that portion of sub area 24-9 easterly of a line commencing at Ginnard Point (49° 08.069N, 125° 51.169) on Meares Island to 49° 07.483 N, 125° 51.811 W on Vancouver Island and westerly of a line commencing at Ausetth Point continuing true south to the Vancouver Island shoreline.</p> <p>Warn Bay - that portion of Sub area 24-10 inside a line between boundary signs at the entrance to the Warn Bay.</p> <p>Grice Bay - that portion of Sub area 24-11 inside a line between boundary signs approximately half way inside Grice Bay to the head of Grice Bay.</p> <p>Subarea 24-13.</p> <p>That portion of Subarea 124-3 approximately 1 nm seaward of the surfline from Hesquiat Harbour southeast to Cleland Island to Ahous Point.</p>
Jul 15 – Jul 31	2	2 Chinook per day	That portion of sub area 24-6 southerly of a line commencing at Kutcous Point (49° 14.961N, 126° 04.817W) on Flores Island to 49° 14.637 N, 126° 00.825 W on Vancouver Island near the Chetarpe I.R.
Aug 1 – Oct 31	0	Chinook non-retention	<p>That portion of 24-8 shoreward of a line drawn from Cox Point to the Lennard Island light, to Echachis Island to Wickaninnish Island to Moser Point.</p> <p>That portion of sub area 24-9 westerly of a line commencing at Ginnard Point (49° 08.069N, 125° 51.169 W) on Meares Island to 49° 07.483 N, 125° 51.811 W on Vancouver Island, and westerly of a line commencing at Ausetth Point continuing true south to the Vancouver Island shoreline.</p> <p>That portion of Sub area 24-10 outside or southwest of a line between boundary signs at the entrance to the Warn Bay.</p> <p>That portion of Sub area 24-11 west of a line between boundary signs approximately half way inside Grice Bay to the head of Grice Bay.</p>
Apr 1 – Mar 31	0	Finfish closure	Kennedy Cove - that portion of 24-12 inside or northwesterly of a line between two fishing boundary signs on the outer southwest corner and the outer northeast corner of the cove.
Apr 1 – Mar 31	0	Finfish closure – Rockfish Conservation Area (RCA)	<p>Area RCA's: Bedwell Sound; Estevan Point; Saranac Island; Vargas Island</p> <p>Details can be found at:</p> <p>http://www.pac.dfo-mpo.gc.ca/fm-gp/maps-cartes/rca-acis/index-eng.html</p>