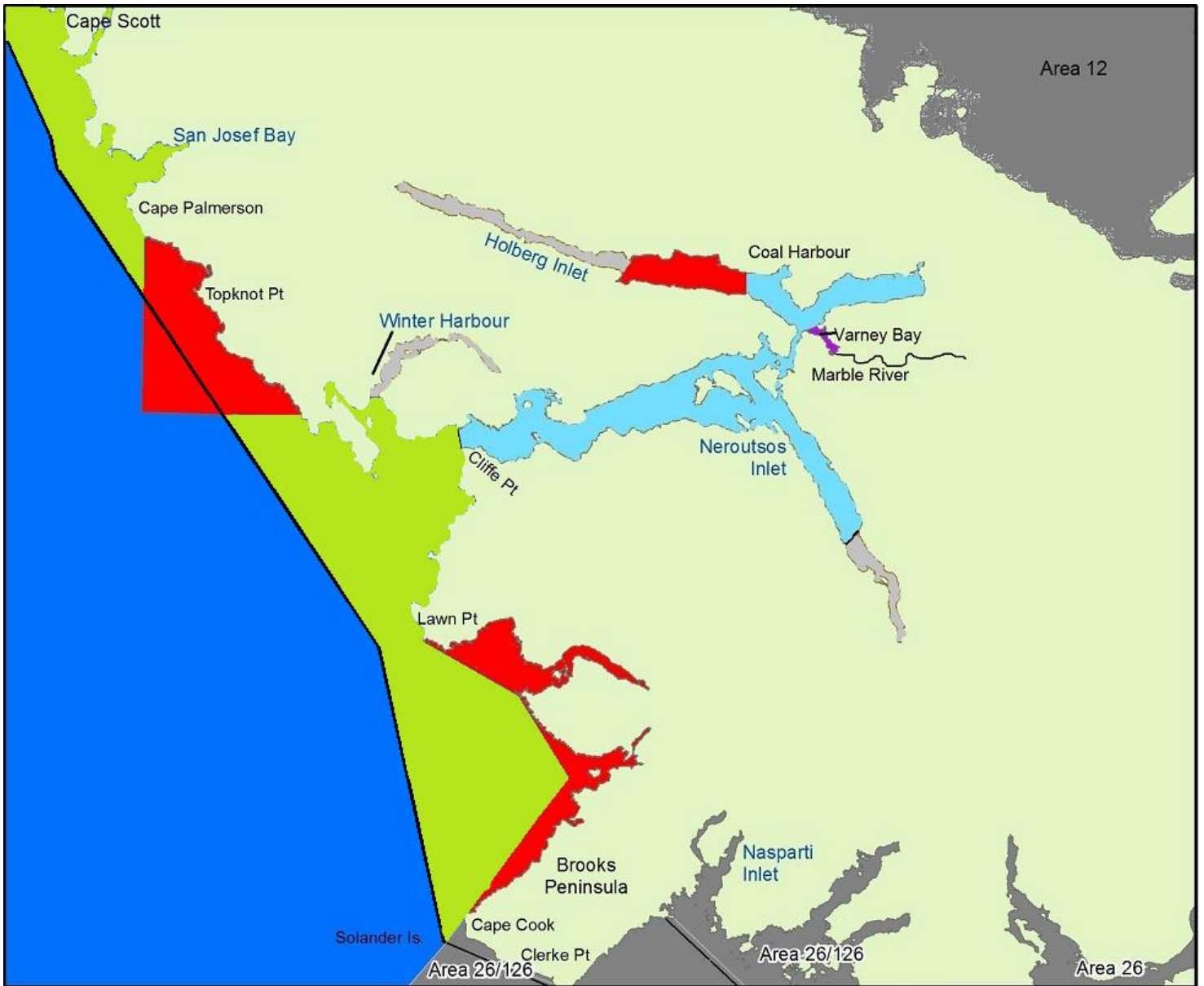
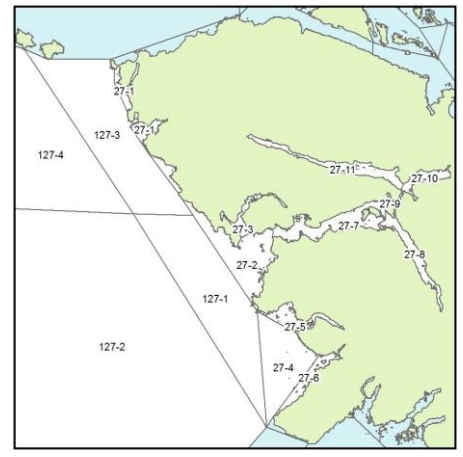




Areas 27 and 127 Quatsino Sound 2024 chinook openings and other closures July 15 – December 31

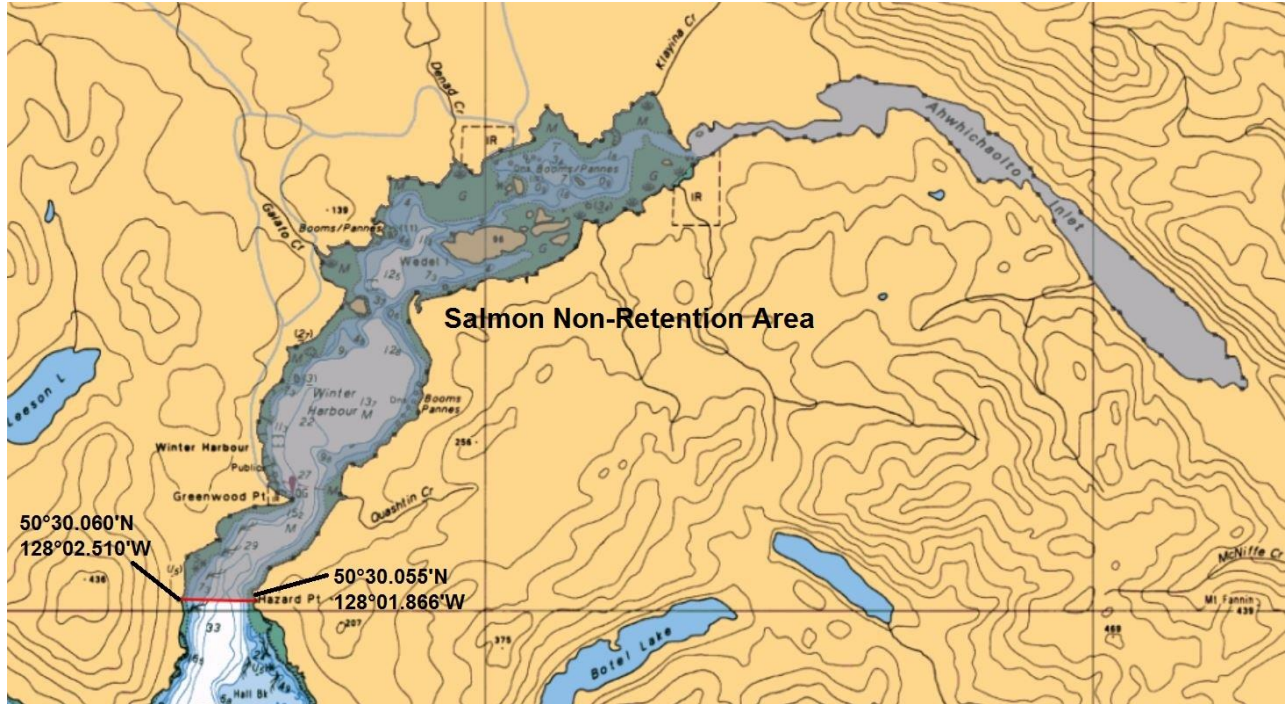


Area 27 and 127	
Date	Regulation
All year	2 chinook per day, minimum size 45 cm, unless otherwise specified below
Jul 15 – Jul 31	2 Chinook per day, maximum size 80 cm, minimum 45 cm.
Aug 1 – Dec 31	2 Chinook per day, minimum size 45 cm.
Jul 15 – Sep 30	1 chinook per day, maximum size 77 cm.
Jul 15– Dec 31	2 Chinook per day, minimum size 45 cm
Jul 15 – Sep 30	Salmon non-retention
Jul 1 – Dec 31	Finfish closure (Varney Bay)
All year	Finfish closure – Rockfish Conservation Area (RCA)
Area 12, 26, 126	Refer to Area 12, 26, and 126 public notices

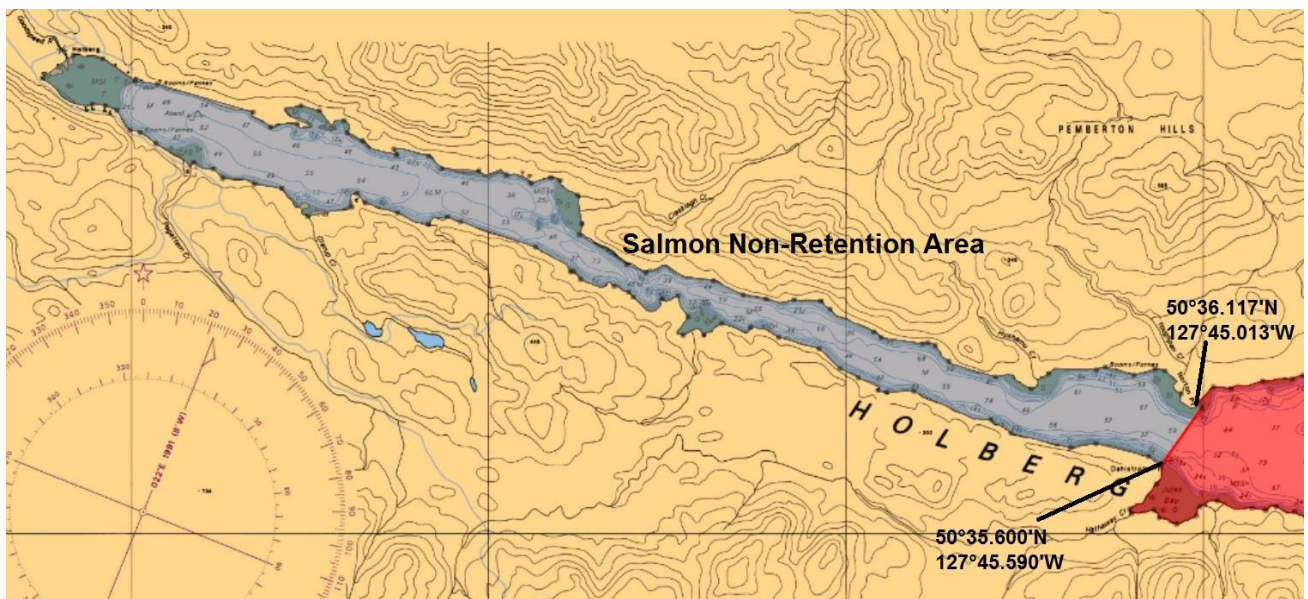




Areas 27 and 127 Quatsino Sound 2024 chinook openings and other closures July 15 – December 31



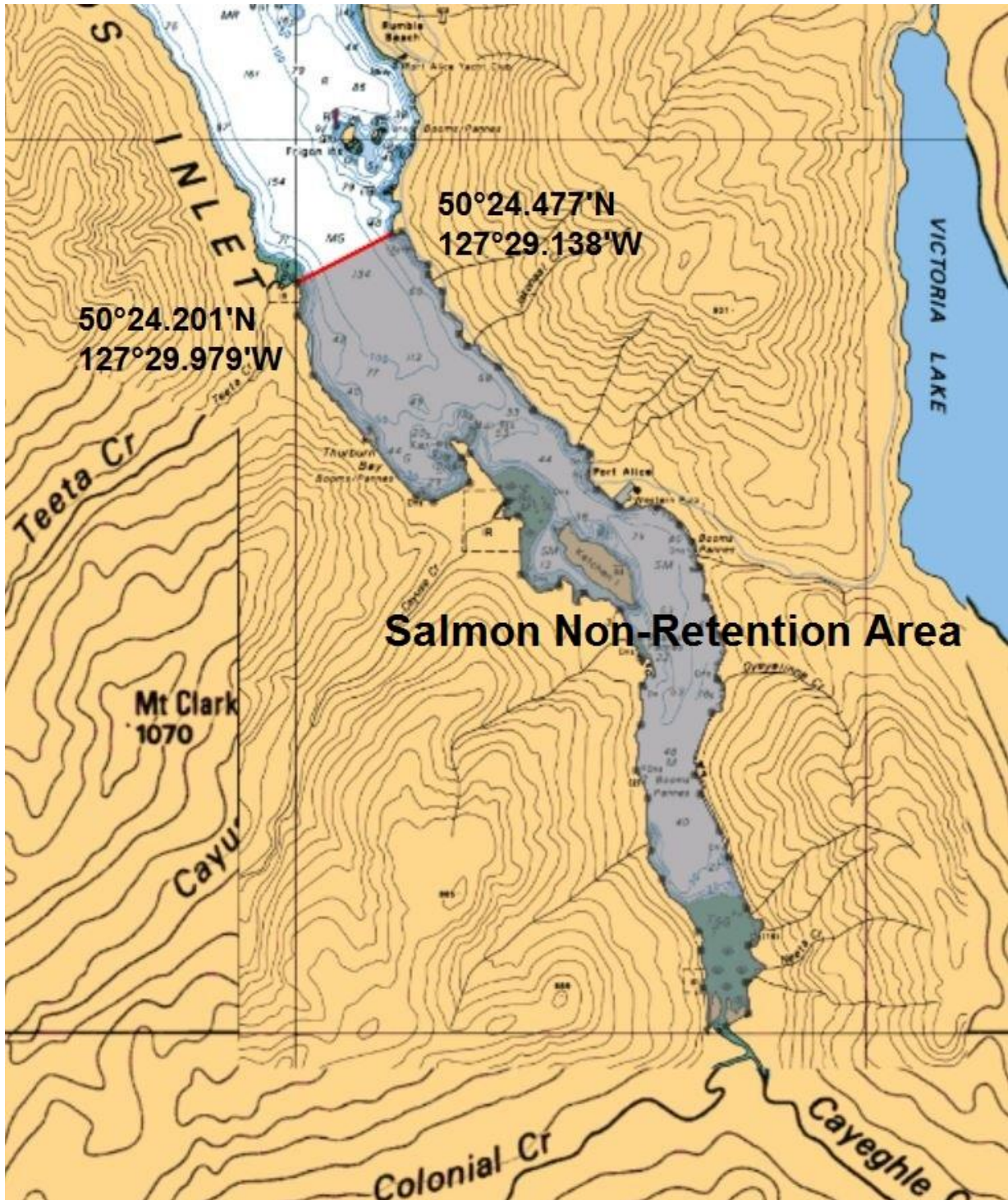
Winter Harbour Salmon Non-Retention Area



Holberg Inlet Salmon Non-Retention Area



Areas 27 and 127 Quatsino Sound 2024 chinook openings and other closures July 15 – December 31



Neroutsos Inlet Salmon Non-Retention Area



Areas 27 and 127 Quatsino Sound 2024 chinook openings and other closures July 15 – December 31

Date	Daily limit	Chinook length restriction and special management measures	Location
Jul 15 – Jul 31	2	2 Chinook per day, maximum size of 80 cm, minimum size of 45 cm	Area 27 and 127 with the exception of the areas and closures described below:
Aug 1 – Dec 31	2	2 Chinook per day, minimum size of 45 cm	Area 27 and 127 with the exception of the areas and closures described below:
Jul 15 – Sep 30	1	1 Chinook per day, maximum size of 77 cm	Subareas 27-7 to 27-11 (Quatsino Sound east of the Cliffe Point Light)
Jul 15 – Dec 31	2	2 Chinook per day, minimum size of 45 cm	Those portions of Area 27 shoreward of the 1 nm WCVI Boundary Line. Coordinates for the boundary line area available on the website and published in a public Fishery Notice. This excludes the Areas 27-7 to 27-11 July 15- September 30 which have separate management measures as indicated above.
Jul 15 – Sep 30	0	Salmon non-retention	That portion of 27-3 in Winter Harbour north of a line drawn from Hazard Point at 50 degrees 30.055'N and 128 degrees 01.866'W west to the opposite shore at 50 degrees 30.060'N and 128 degrees 02.510'W. That portion of Subarea 27-11 west of the Holberg Inlet RCA. That portion of 27-8 southeast of a line drawn from a point located at 50 degrees 24.201'N and 127 degrees 29.979'W to a point on the opposite shore of Neroutsos Inlet located at 50 degrees 24.477'N and 127 degrees 29.138'W.
Jul 1 – Dec 31	0	Finfish closure	That portion of subarea 27-10 from the Marble River tidal boundary downstream to the fishing boundary signs at the entrance of Varney Bay
Apr 1 – Mar 31	0	Finfish closure – Rockfish Conservation Area (RCA)	Topknot , those waters of subareas 27-1, 27-2, 127-1 and 127-3 that lie inside a line that begins at the intersection of the westerly shoreline of Vancouver Island with the parallel passing through 50°29.000' north latitude , then true west to the intersection with the meridian passing through 128°18.000' west longitude, then true north to Cape Palmerston, then southerly following the shoreline of Vancouver Island to the beginning point. http://www.pac.dfo-mpo.gc.ca/fm-gp/maps-cartes/rca-acis/index-eng.html
Apr 1 – Mar 31	0	Finfish closure – Rockfish Conservation Area (RCA)	Holberg Inlet, that portion of subarea 27-11 that lies easterly of a line from 50°36.117'N and 127°45.013'W - Norton Point to 50°35.600'N and 127°45.590'W – Dahlstrom Point http://www.pac.dfo-mpo.gc.ca/fm-gp/maps-cartes/rca-acis/index-eng.html
Apr 1 – Mar 31	0	Finfish closure – Rockfish Conservation Area (RCA)	Brooks Bay, subareas 27-5 and 27-6 and those waters of subarea 27-4 that lie northeasterly of a line from 50°17.263'N and 127°51.893'W – Heater Point to 50°13.847'N and 127°48.495'W – Donald Islets Light. http://www.pac.dfo-mpo.gc.ca/fm-gp/maps-cartes/rca-acis/index-eng.html