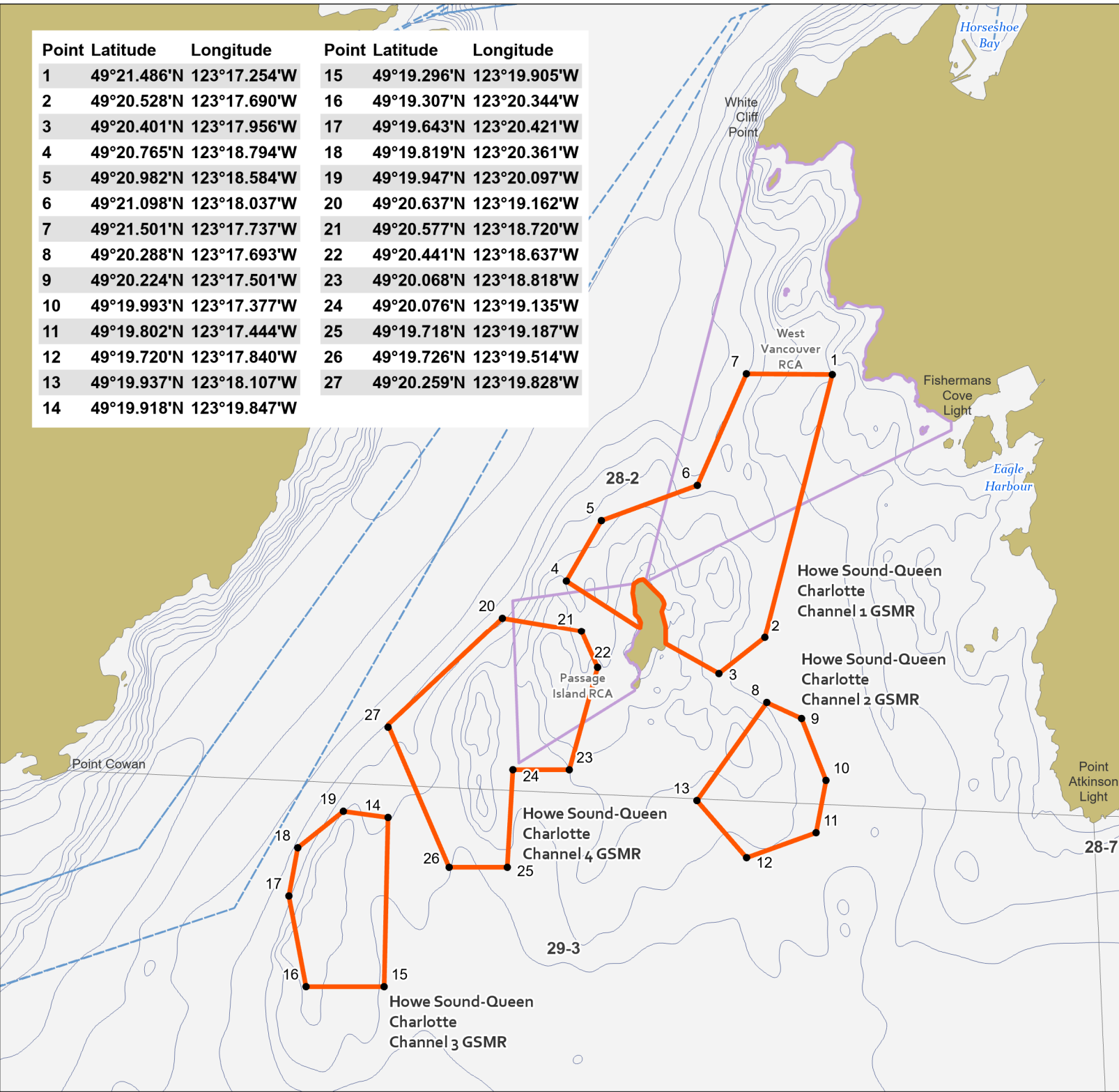


Point	Latitude	Longitude	Point	Latitude	Longitude
1	49°21.486'N	123°17.254'W	15	49°19.296'N	123°19.905'W
2	49°20.528'N	123°17.690'W	16	49°19.307'N	123°20.344'W
3	49°20.401'N	123°17.956'W	17	49°19.643'N	123°20.421'W
4	49°20.765'N	123°18.794'W	18	49°19.819'N	123°20.361'W
5	49°20.982'N	123°18.584'W	19	49°19.947'N	123°20.097'W
6	49°21.098'N	123°18.037'W	20	49°20.637'N	123°19.162'W
7	49°21.501'N	123°17.737'W	21	49°20.577'N	123°18.720'W
8	49°20.288'N	123°17.693'W	22	49°20.441'N	123°18.637'W
9	49°20.224'N	123°17.501'W	23	49°20.068'N	123°18.818'W
10	49°19.993'N	123°17.377'W	24	49°20.076'N	123°19.135'W
11	49°19.802'N	123°17.444'W	25	49°19.718'N	123°19.187'W
12	49°19.720'N	123°17.840'W	26	49°19.726'N	123°19.514'W
13	49°19.937'N	123°18.107'W	27	49°20.259'N	123°19.828'W
14	49°19.918'N	123°19.847'W			



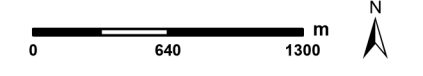
Howe Sound - Queen Charlotte Channel

Glass Sponge Reef Closures

Legend

- Glass Sponge Reef Marine Refuge (GSMR)
- Rockfish Conservation Areas (RCA)
- 12-1 PFMA Subarea
- Bathymetry - 25m contours
- Ferry Routes
- Communities
- Land

*For Illustrative Purposes Only
Not for Navigation*



Data Sources and Notes

Map layers sourced from the Canadian Hydrographic Service, Natural Resources Canada, Fisheries and Oceans Canada, and the Government of British Columbia.

Produced by the Fisheries Management Marine Conservation Targets Team, DFO, Pacific Region.

Updated: 1/11/2024

Datum: NAD83, Projection: BC Albers

Please check out website for current fishing regulations: <https://www.pac.dfo-mpo.gc.ca/>

Fisheries and Oceans Canada Pêches et Océans Canada