

Fraser River Environmental Watch Report

Sep 05, 2024

Ten-day daily forecasts of lower Fraser River temperature and flow conditions as well as current conditions throughout the Fraser basin are updated bi-weekly from roughly late-June until mid-August. These short-range forecasts are generated using river temperature and river flow forecast models (Hague and Patterson 2014).

The latest research on Pacific salmon freshwater migration suggests there are population-specific differences in temperature and flow tolerance thresholds (Eliason et al. 2011). These differences likely relate back to the variability in the average river environmental conditions experienced by salmon beginning their river migration at different times of the year and along different paths (Farrell et al. 2008). Despite these differences, there are also species-wide thresholds that will result in migration difficulties for most populations of Fraser River sockeye salmon. We provide species-level thresholds as a guide to interpreting the potential effect of current and forecasted river temperature and flow conditions on returning salmon. However, in general, fish historically returning to the Fraser River in the mid-summer will be more tolerant of higher temperatures than those fish returning in the early or late summer or early fall.

Current Temperatures			
September 4, 2024	Daily Mean	Historic Mean	Year Range
Stuart River @ Fort St. James	17.7	15.8	2000-2023
Stellako River @ Glenannan	17.8	16.6	2011-2023
Nautley River @ Fort Fraser	18.7	15.9	2007-2023
Nechako River @ Vanderhoof	18.1	15.5	2000-2023
Nechako River @ Isle Pierre	18.0	16.2	2006-2023
Bowron River @ Box Canyon	15.6	NA	New
Fraser River @ Shelley	15.3	12.6	1994-2023
Quesnel River @ Quesnel	17.1	15.9	2000-2023
Fraser River @ Marguerite	17.5	15.6	2015-2023
Chilcotin River @ Hanceville	15.4	14.6	2019-2023
Fraser River @ Texas Creek	18.1	16.0	2006-2023
North Thompson River @ McLure	NA	14.1	2006-2023
South Thompson River @ Chase	20.0	18.7	1994-2023
Thompson River @ Ashcroft	18.5	17.9	1995-2023
Fraser River @ Qualark	19.2	16.1	1950-2023

**Nechako R @ Isle Pierre water temperature was calculated using a mixing model*

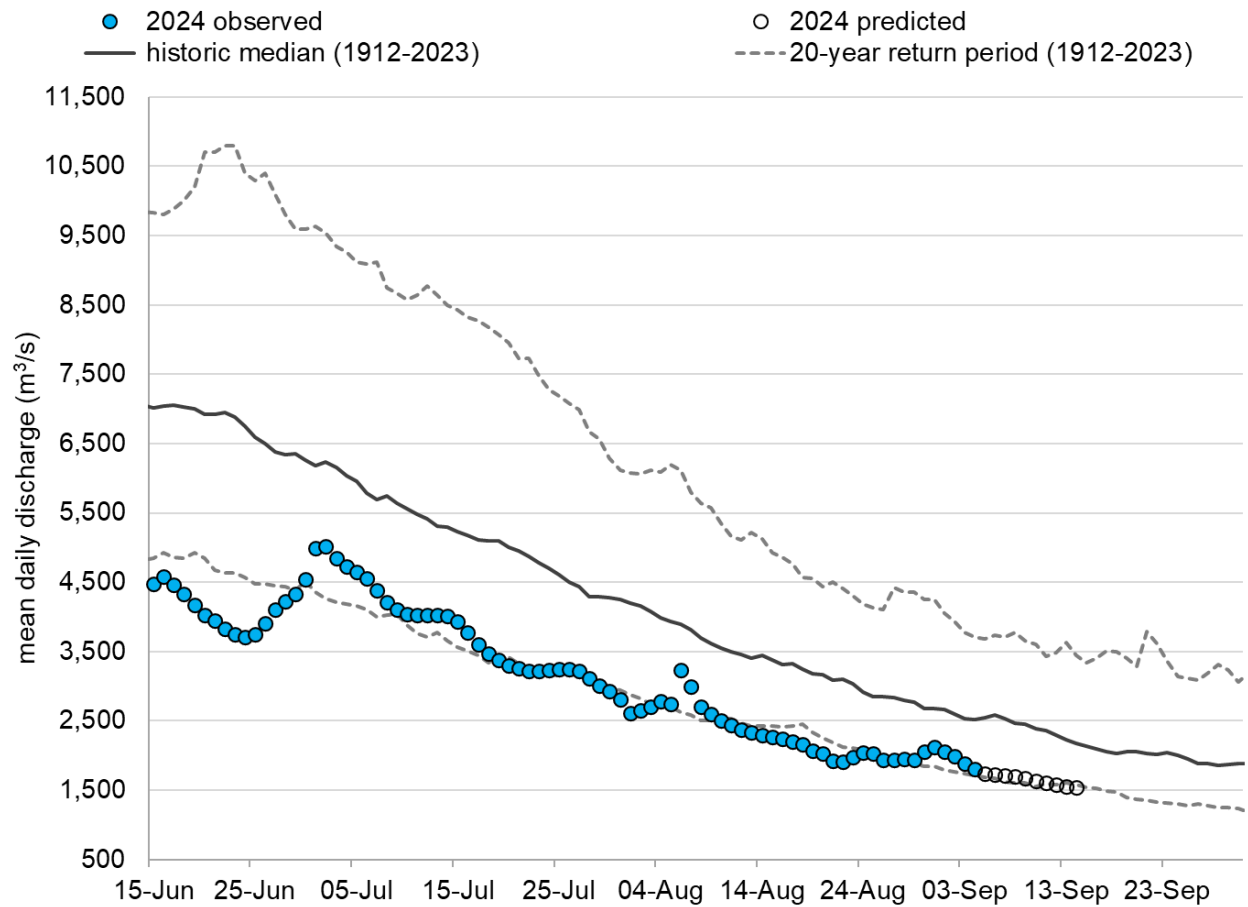
Fraser River Discharge at Hope

Critical levels for fish passage through lower Fraser Canyon:

7000 cms - Early signs of physiological stress evident

8000 cms - Difficulty in migration delaying migration time.

9000 cms - Barrier to migration through Hell's Gate.



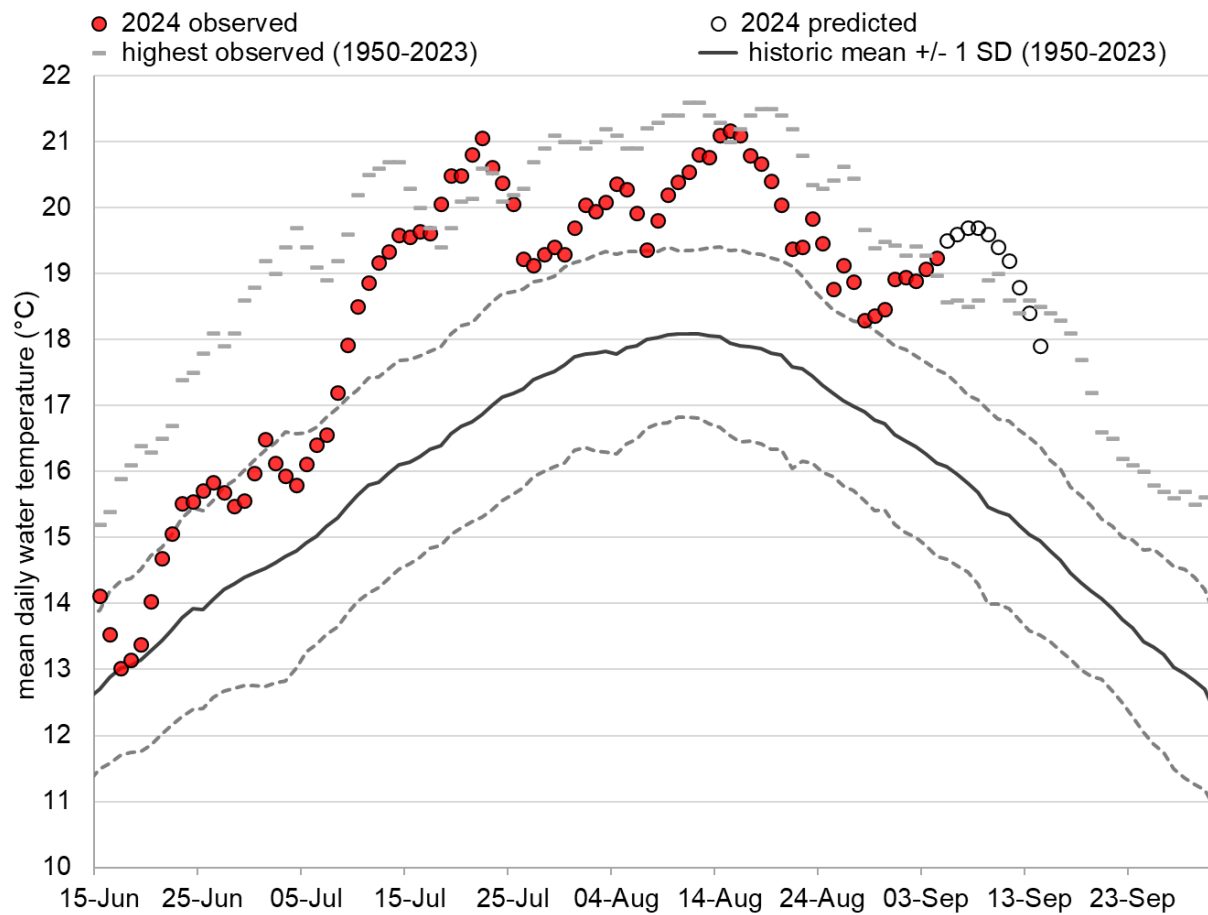
Fraser River Water Temperatures at Qualark

18°C - Decreased swimming performance

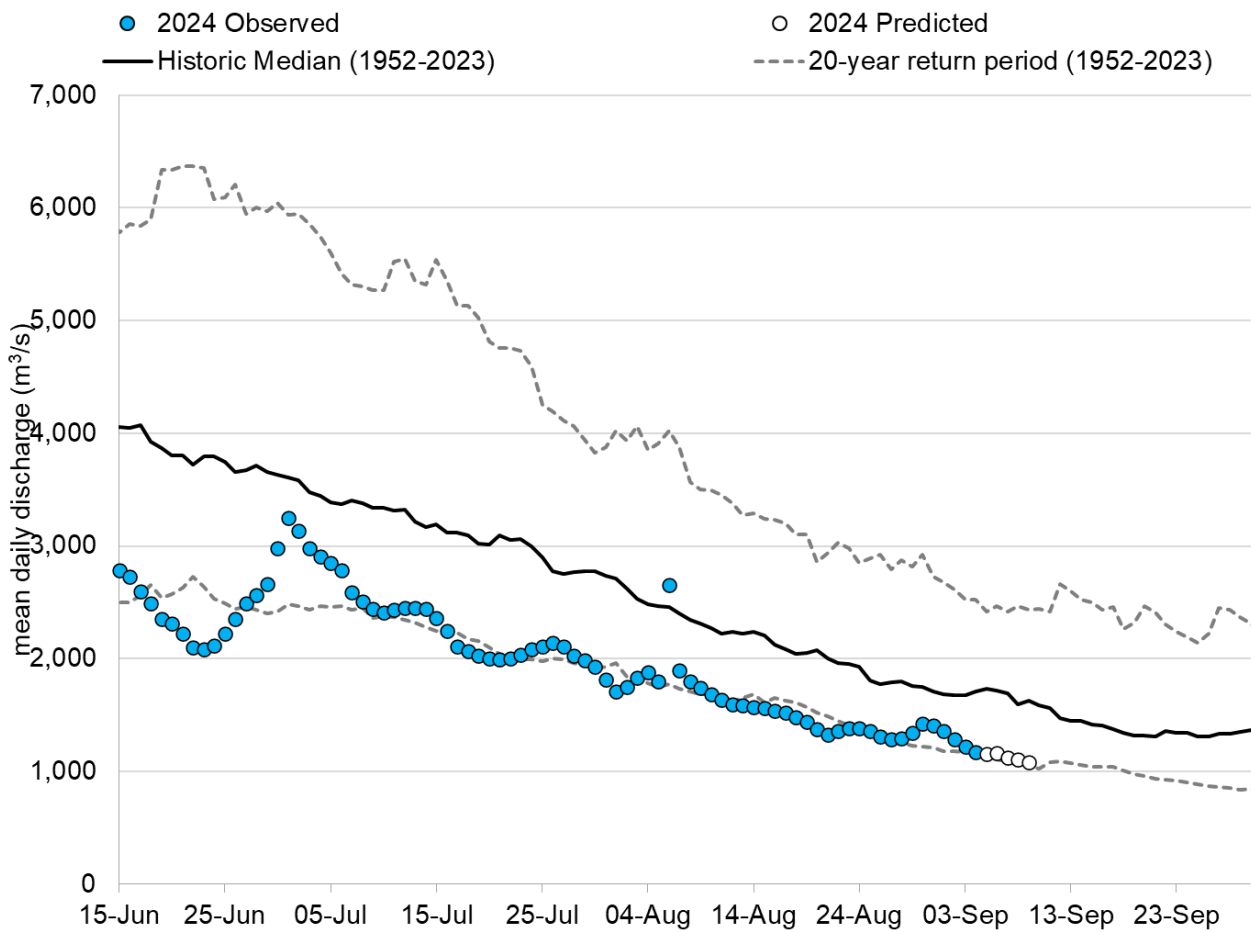
19°C - Early signs of physiological stress and slow migration

20°C - Associated with high pre-spawn mortality and disease

21°C - Chronic exposure can lead to severe stress and early mortality.



Fraser River Discharge above Texas Creek



Fraser River Water Temperatures above Texas Creek

